



Flywheel of large energy storage power generation equipment





Overview

A typical system consists of a flywheel supported by rolling-element bearing connected to a motor-generator. The flywheel and sometimes motor-generator may be enclosed in a vacuum chamber to reduce friction and energy loss. First-generation flywheel energy-storage systems use a large steel flywheel rotating on mechanical bearings. Newer systems use carbon-fiber composite r.

OverviewFlywheel energy storage (FES) works by spinning a rotor () and maintaining the energy in the system as . When energy is extracted from the system, the flywheel's rotational speed is reduced a.

Compared with other ways to store electricity, FES systems have long lifetimes (lasting decades with little or no maintenance; full-cycle lifetimes quoted for flywheels range from in excess of 10 , up to 10 , cycles.

In the 1950s, flywheel-powered buses, known as , were used in () and () and there is ongoing research to make flywheel systems that are smaller, lighter, cheaper and have.



Flywheel of large energy storage power generation equipment



Technology: Flywheel Energy Storage

Large synchronous flywheels are also used for energy storage, yet not to be mistaken with FESS. They use very large flywheels with a mass in the order of 100 tonnes. These are directly ...

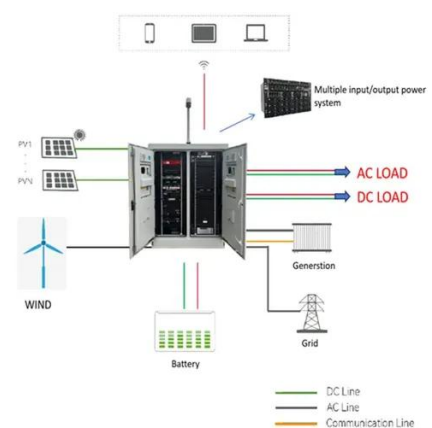
Flywheel energy storage

First-generation flywheel energy-storage systems use a large steel flywheel rotating on mechanical bearings. Newer systems use carbon-fiber composite rotors that have a higher ...



Next-Generation Flywheel Energy Storage , ARPA-E

Beacon Power is developing a flywheel energy storage system that costs substantially less than existing flywheel technologies. Flywheels store the energy created by ...

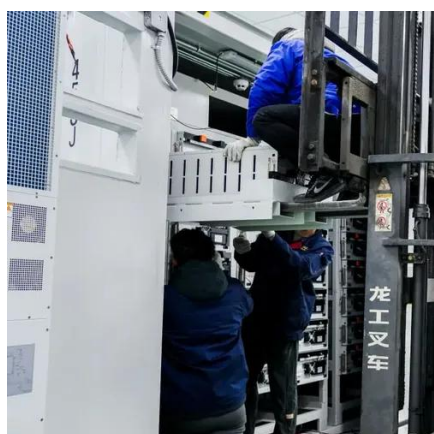


Applications of flywheel energy storage system on load frequency

Flywheel energy storage systems (FESS) are considered environmentally friendly short-term energy storage solutions due to their capacity for



rapid and efficient energy storage ...



Flywheel Energy Storage Systems and their Applications: A ...

Flywheel energy storage systems have gained increased popularity as a method of environmentally friendly energy storage. Fly wheels store energy in mechanical rotational ...

Flywheel Energy Storage: A High-Efficiency Solution

Flywheel technology is a sophisticated energy storage system that uses a spinning wheel to store mechanical energy as rotational energy. This system ensures high energy ...



Flywheel storage power system

Stadtwerke München (SWM, Munich, Germany) uses a flywheel storage power system to stabilize the power grid, as well as control energy and to compensate for deviations from renewable ...





Flywheel Power Systems Information

Large-scale flywheel energy storage systems are measured in MWh's and use several flywheels that are coupled together. Flywheel power systems store energy very efficiently and have the ...



[A Review of Flywheel Energy Storage System Technologies](#)

One such technology is flywheel energy storage systems (FESSs). Compared with other energy storage systems, FESSs offer numerous advantages, including a long lifespan, ...



Flywheel Power Systems Information

OperationEnergy DensityApplicationsComponents of A Flywheel Power SystemStandards & RegulationsFlywheel energy storage systems are designed for regenerative braking applications, to supplement DC power in uninterruptible power systems (UPS), or for energy storage applications in power grids. See more on [globalspec](#)



Videos of Flywheel Of Large Energy Storage Power Generation E...

Watch video10:42The World's Largest Flywheel Energy Storage System is Changing Everything #FlywheelEnergy The Forge Empire18.4K views1 month agoWatch video3:48How flywheel energy storage system works COR-ENERGY3K viewsMay 7, 2023Watch video2:35Flywheel Energy Storage Application Example Dumarey Green Power3.6K viewsAug 14, 2020Watch full videoSee moreiea-es [PDF]



Technology: Flywheel Energy Storage - iea-es

Large synchronous flywheels are also used for energy storage, yet not to be mistaken with FESS. They use very large flywheels with a mass in the order of 100 tonnes. These are directly ...



A review of flywheel energy storage systems: state of the art ...

Primary candidates for large-deployment capable, scalable solutions can be narrowed down to three: Li-ion batteries, supercapacitors, and flywheels. The lithium-ion ...



Contact Us

For inquiries, pricing, or partnerships:

<https://sccd-sk.eu>

Phone: +32 2 808 71 94

Email: info@sccd-sk.eu

Scan QR code for WhatsApp.

