



Gaborone double glass solar modules





Overview

What is a double glass solar module?

In the ever-evolving world of photovoltaic technology, double glass solar modules are emerging as a game-changer. By encapsulating solar cells between two layers of glass, these modules offer unparalleled durability and efficiency. But what exactly sets them apart?

What are double glass solar modules?

.

What is a double glass module?

In contrast, double glass modules replace the polymer layer with another glass sheet, creating a robust sandwich structure. At IBC SOLAR, we use 2,0 mm x 2,0 mm glass layers, whereas some other market offerings use thinner 1,6 mm x 1,6 mm layers. This ensures greater durability and longevity.

Why is double glass important for solar panels?

Double Glass is especially important in photovoltaic facilities such as solar power plants and with the expected long service life of modules such as AKCOME, Jinergy or Jolywood. Why solar panels with glass-glassTechnology?

Why is solar double glass more durable?

.

Are glass-glass solar modules a game-changer?

In the ever-evolving world of photovoltaic technology glass-glass solar modules are emerging as a game-changer.



Gaborone double glass solar modules

Double glass solar module , Maysun Solar



Compared to traditional single glass modules, double glass modules offer significant advantages, particularly in terms of efficiency and durability. The rear glass layer can absorb reflected light, ...

Top Photovoltaic Glass Factories in Gaborone Key Players and ...

Botswana's capital, Gaborone, has emerged as a strategic location for photovoltaic glass factories, thanks to its abundant sunlight and government incentives. With solar energy ...



Double Glass Solar Panels

They also sometimes called dual glass solar panels. Benefits of replacing the opaque backsheet with glass outweigh its disadvantage of being costlier and heavier than ...

Double glass solar module , Maysun Solar

Compared to traditional single glass modules, double glass modules offer significant advantages, particularly in terms of efficiency and durability. ...



TOP PHOTOVOLTAIC GLASS FACTORIES IN GABORONE ...

In order to deal with the current imbalance between supply and demand and overcapacity in the market, the top ten photovoltaic glass manufacturers including Xinyi Solar and Flat Glass ...



Why Double Glass Modules Are Revolutionizing Solar Energy ...

Let's cut through the jargon: we're here to explain why these modules outperform traditional single-glass designs - and how they're reshaping commercial solar projects globally.



TOP PHOTOVOLTAIC GLASS FACTORIES IN GABORONE KEY PLAYERS

In order to deal with the current imbalance between supply and demand and overcapacity in the market, the top ten photovoltaic glass manufacturers including Xinyi Solar and Flat Glass ...





Solar Factory in Botswana: Gaborone vs. Francistown Location ...

Choosing a solar factory location in Botswana? This guide compares Gaborone and Francistown on logistics, costs, labor, and infrastructure to help your investment succeed.



What is photovoltaic double glass panel technology

Double-glass solar panels can withstand high humidity, high temperatures, sandstorms, ultraviolet, and corrosion, making them more reliable and durable to ensure a long lifetime of ...

Double the strengths, double the benefits

Traditional solar panels typically feature a glass front and a polymer backsheet. In contrast, double glass modules replace the ...



Double the strengths, double the benefits

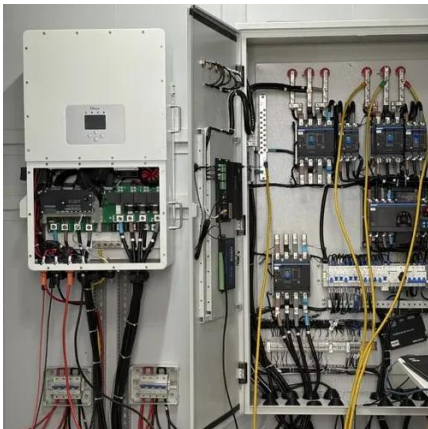
Traditional solar panels typically feature a glass front and a polymer backsheet. In contrast, double glass modules replace the polymer layer with another glass sheet, creating a ...





DOUBLE GLASS PV MODULES

With photovoltaic glass units, that futuristic concept became reality last month in Singapore's new Marina Bay expansion project. These transparent solar panels achieved 12% efficiency while ...

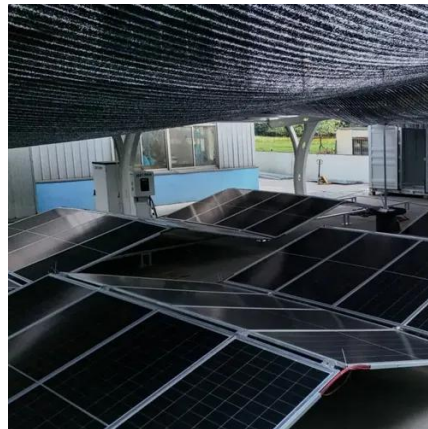


Glass-Glass Solar Panel Technology

There are frameless double glass modules that reveal the back side of the cells, but are not double-sided. True bifacial solar panel have contacts / busbars on both the front and rear of ...

Glass-Glass Solar Panel Technology

There are frameless double glass modules that reveal the back side of the cells, but are not double-sided. True bifacial solar panel have contacts / ...





Contact Us

For inquiries, pricing, or partnerships:

<https://sccd-sk.eu>

Phone: +32 2 808 71 94

Email: info@sccd-sk.eu

Scan QR code for WhatsApp.

