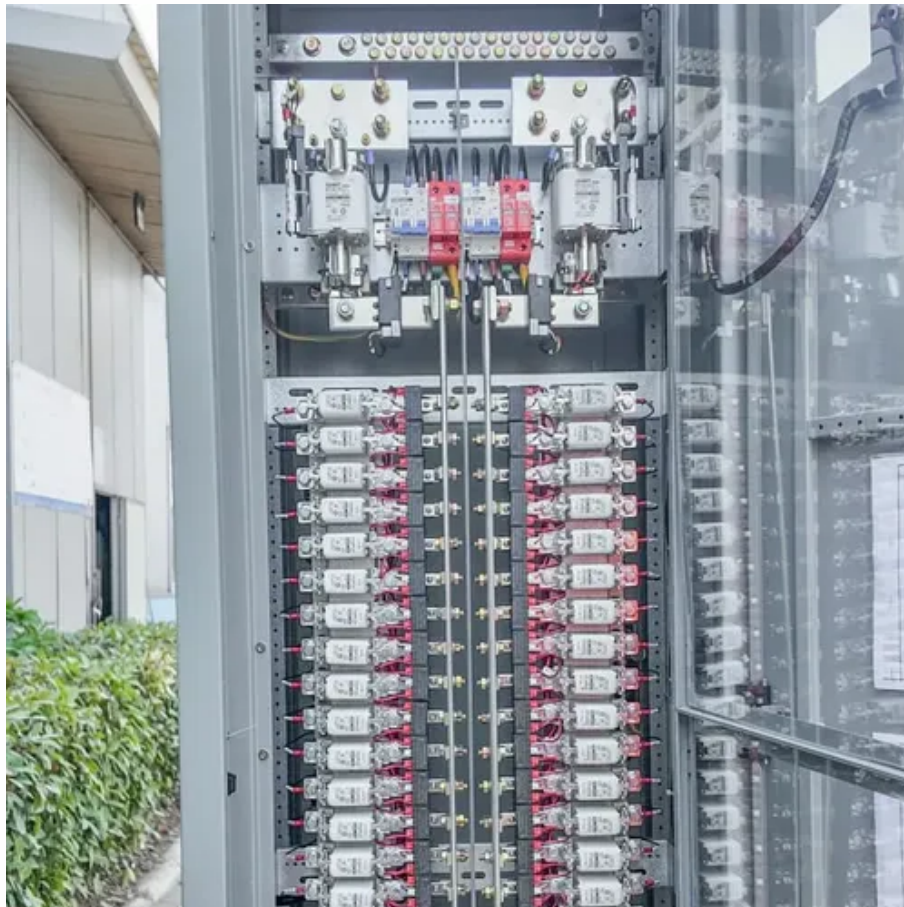




# Generator to substation





## Overview

---

Substations typically serve at least one of the following purposes:

- Increasing the voltage produced by for efficient over long distances, using step-up transformers
- of different power grids

The three-phase power leaves the generator and enters a transmission substation at the power plant. This substation uses large transformers to convert or "step up" the generator's voltage to extremely high voltages for long-distance transmission on the transmission grid.

The three-phase power leaves the generator and enters a transmission substation at the power plant. This substation uses large transformers to convert or "step up" the generator's voltage to extremely high voltages for long-distance transmission on the transmission grid.

In all the stand alone applications the installation includes an automatic changeover able to switch from the utility network supply to the generator (s) in case of failure of the utility supply (see Fig. B45). Fig. B45 - Automatic change over associated with stand-alone generators The generators.

In a less simple way, substation is the key part of electrical generation, transmission, and distribution systems. Substation transforms voltage from high to low or from low to high as necessary. Substation also dispatches electric power from generating stations to the consumption center. Electric.

View of a 50 Hz electrical substation in Australia, showing three 220 kV/66 kV (150 kVA) transformers. Steel lattice structures support strain bus wires and apparatus, and transformer fire barriers prevent catastrophic failure of any one transformer from damaging adjacent units. [1] An American.

This article examines the functions of four different types of substations within the electrical grid: step-up, step-down, transmission, and distribution. Voltage transformation is essential in power systems. For balanced three-phase systems, the real power transferred is:  $P = \sqrt{3} V_L I_L$ .

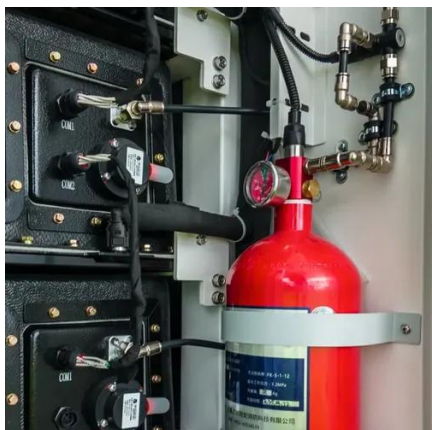
Otter Tail Power Company gratefully acknowledges permission granted by Northern States Power and Georgia Power Company to utilize their "Guide for Interconnection Requirements and Parallel Operation of Customer Owned Generation" as a basis for several sections. II. III. IV. VI. VII. Generation.



Substations are power stations that include power transformers, potential or voltage transformers, current transformers, electrical bus, breakers, switches, and so on. A substation is a station that includes a power transformer for power conversions either stepping up or stepping down the supply.



## Generator to substation



### The basic things about substations you MUST know in the middle ...

Transmission substations integrate transmission lines into a network with multiple parallel interconnections, so that power can flow freely over long distances from any generator ...

### Substation including generators and parallel operation of ...

The reactive power delivered by a generator increase when its excitation current is increase and vice versa. Dedicated modules are installed to perform these sharing, generally ...



### Understanding the Role of Substations Along the ...

Because step-up and step-down substations serve complementary roles in moving bulk power efficiently from generators to ...

### Generator Step Up Transformer - Voltage, Substations, Power Grid

A Generator step up transformer increases the generator output voltage to transmission levels, supporting power plants, substations, and grid



integration. It enhances efficiency, minimizes ...



### **Substation including generators and parallel operation of transformers**

The reactive power delivered by a generator increase when its excitation current is increase and vice versa. Dedicated modules are installed to perform these sharing, generally ...



### **How Power is Delivered to Your Home**

The high voltage power produced by the generator enters a transmission substation at the power plant. Inside the substation large transformers convert the generator's voltage up to extremely ...



### [WEG Power Transformers: Substations, Generator Step-up, Auto](#)

WTU manufactures Power Substation, Generator Step-up, and Auto Transformers for a wide variety of customers. Request a quote today!





## The Transmission Substation

The three-phase power leaves the generator and enters a transmission substation at the power plant. This substation uses large transformers to convert or "step up" the generator's voltage to ...



## Guidelines for Generation, Tie-Line, and Substation ...

The applicant's generator shall be equipped with Automatic Generator Control ("AGC") equipment to permit remote control of the unit and enable the generation to be ...

## Substation

Substations transform voltage from high to low, or the reverse, or perform any of several other important functions. Between the generating station and the consumer, electric power may ...



## Understanding the Role of Substations Along the Transmission Path

Because step-up and step-down substations serve complementary roles in moving bulk power efficiently from generators to end-users, we'll start by examining both of them ...



## The basic things about substations you MUST know in the middle ...

Substation Equipment Transformers Circuit Breakers Disconnecting Switches Substation Bus Surge Arresters Insulators and Conductors Protective Relays Fuses Substation Location All power transmission lines must be isolated to avoid safety hazards. Large strings of insulators are used at substations and at other points along the power distribution system to isolate the current carrying conductors from their steel supports or any other ground mounted equipment. Insulators may be made of porcelain, rubber or a thermoplastic See more on electrical-engineering-portal



## Videos of Generator to Substation

Watch video SUBSTATION - HOW TO CONNECT TO GENERATOR (EXPLAINED) , Last Day On Earth: S... Anonymous Prophet 30.9K views Jan 24, 2023 Watch video 12:38 How Do Substations Work? Practical Engineering 3.5M views Aug 27, 2019 Watch video 0:44 Substation , Types of Substations , Power Generating System. Basic Electrical Learning 1.5K views 8 months ago Watch full video See more Wikipedia

## Substation - Wikipedia

Overview Types Construction Design Components Maintenance Automation Further reading

Substations typically serve at least one of the following purposes:

- o Increasing the voltage produced by electric power generation for efficient transmission over long distances, using step-up transformers
- o Interconnection of different power grids

### [Basics of Designing Power Substations](#)

Generating substations step up the voltage from the generator's lower voltage to a higher voltage which is more suitable, and more economical for transmitting electric power ...





## Contact Us

---

For inquiries, pricing, or partnerships:

<https://sccd-sk.eu>

Phone: +32 2 808 71 94

Email: [info@sccd-sk.eu](mailto:info@sccd-sk.eu)

Scan QR code for WhatsApp.

