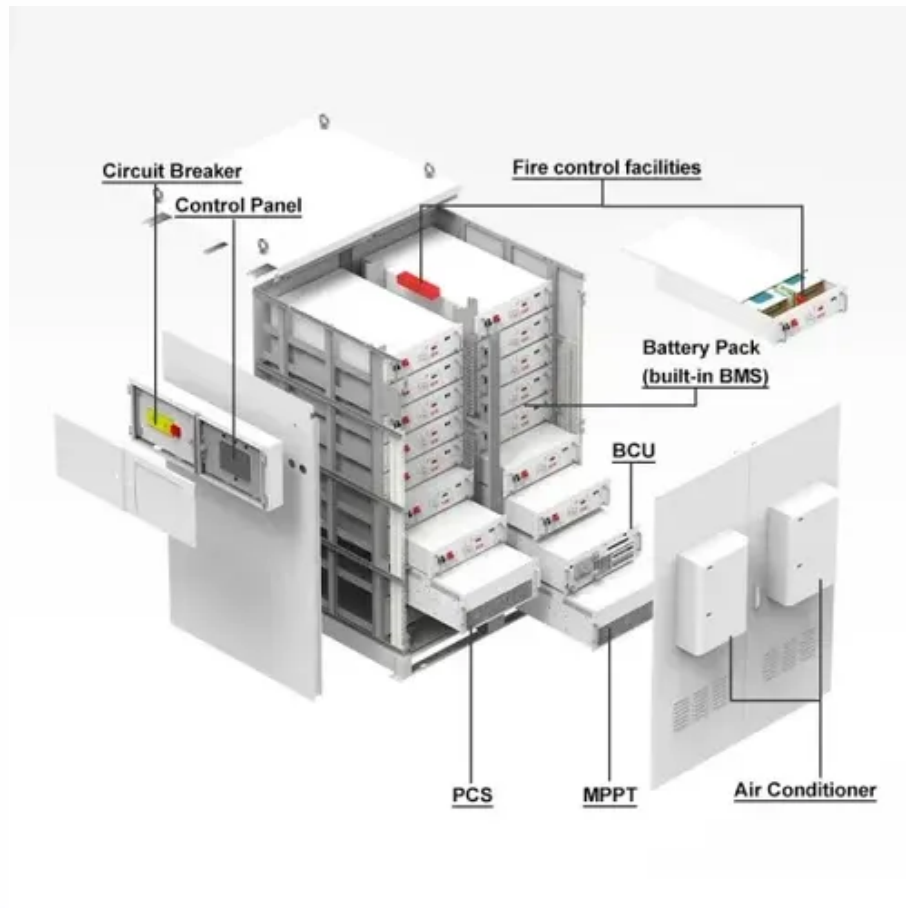




# Green solar container energy storage system Innovation Service





## Green solar container energy storage system Innovation Service

---



### Stool color: When to worry

Stool color is generally influenced by what you eat as well as by the amount of bile -- a yellow-green fluid that digests fats -- in your stool. As bile travels through your digestive ...

### Green stool Causes

Infants Infants might have green stool as a result of: Not finishing breastfeeding entirely on one side. This can result in baby missing some of the high-fat-content breast milk, ...



### Discolored semen: What does it mean?

Yellow or green semen. Semen can look more yellow as a person gets older. Other causes could be an infection, jaundice, or a side effect of taking medicine that turns the ...

### Baby poop: What to expect

Yellow-green. Your baby's poop may turn this color once the meconium stool has passed. Yellow. Breastfed newborns usually have seedy, loose stool that looks like light ...



## Green stool

Green stool -- when your feces look green -- is usually the result of something you ate, such as spinach or dyes in some foods. Certain medicines or iron supplements also can ...



## Color blindness

Is it red or is it green? Learn more about what causes this common eye condition and how to tell whether you can distinguish between certain shades of color.



## Isabel C. Green, M.D., M.H.P.E.

Dr. Isabel Green completed her Obstetrics & Gynecology residency at John Hopkins University and fellowship in Minimally Invasive Gynecologic Surgery at Georgetown University-MedStar. ...



## Urine color

Urine can turn green due to a medicine for pain and arthritis symptoms called indomethacin (Indocin, Tivorbex). Green urine also can be caused by propofol (Diprivan), a ...

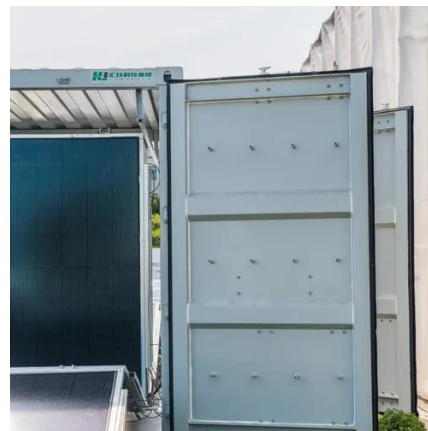


## Color blindness

Color blindness is usually inherited, meaning it's passed down through families. Men are more likely to be born with color blindness. Most people with color blindness can't tell ...

## Indocyanine green (interstitial route, intradermal route, ...

Indocyanine green injection is used to help diagnose or find problems in your blood vessels, blood flow and tissue perfusion before, during, and after a surgery or transplant, bile ...





## Contact Us

---

For inquiries, pricing, or partnerships:

<https://sccd-sk.eu>

Phone: +32 2 808 71 94

Email: [info@sccd-sk.eu](mailto:info@sccd-sk.eu)

Scan QR code for WhatsApp.

