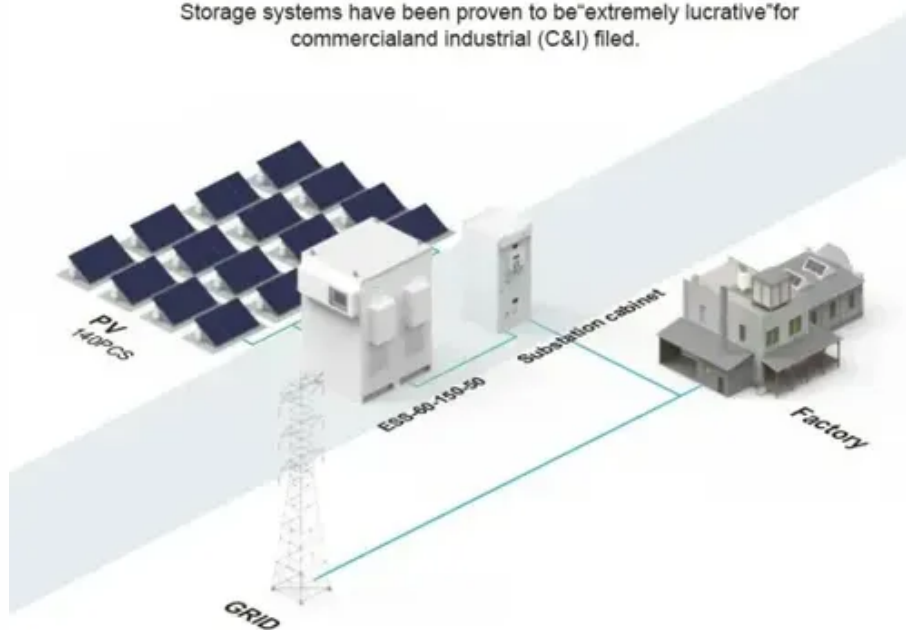




Haiti solar container lithium battery pack parallel connection

BASIC APPLICATION

Storage systems have been proven to be "extremely lucrative" for commercial and industrial (C&I) filed.





Overview

The batteries can be connected in parallel. Series connection is not allowed. Use in upright position only. The batteries are not allowed to be connected with PWM controller for charging.

The batteries can be connected in parallel. Series connection is not allowed. Use in upright position only. The batteries are not allowed to be connected with PWM controller for charging.

To support full output load, at least 2 sets of LPBF48V for inverter larger than 6KVA in parallel connection. **GROUNDING INSTRUCTIONS** - This System should be connected to a permanent grounded wiring system. Be sure to comply with local requirements. NEVER cause AC output and DC input short.

Connecting lithium solar batteries in series or parallel is essential for customizing energy storage systems. In a series connection, the voltage increases while the capacity remains the same, making it suitable for high-voltage applications. In a parallel connection, the capacity increases while.

Lithium battery banks using batteries with built-in Battery Management Systems (BMS) are created by connecting two or more batteries together to support a single application. Connecting multiple lithium batteries into a string of batteries allows us to build a battery bank with the potential to.

Parallel connection involves connecting multiple lithium batteries together to increase the overall capacity and current output of the battery system. When batteries are connected in parallel, their positive terminals are connected to each other, and their negative terminals are also connected to.

Understanding Battery Types: Familiarize yourself with the different types of batteries (lead-acid, lithium-ion, and nickel-based) to select the best option for your solar system. **Comparison of Connections:** Learn the difference between series and parallel battery connections; series increases.

Before connecting batteries in series or parallel, it is important to balance them to reduce voltage differences and optimize their performance. For lithium batteries, visit [Lithium Battery Balancing](#). Wiring the batteries up to achieve the necessary



capacity is akin to the internal battery wiring.



Haiti solar container lithium battery pack parallel connection



[Understanding Parallel Connection of Lithium Batteries](#)

By following the step-by-step guide provided in this article and considering the necessary precautions, you can successfully connect lithium batteries in parallel while ensuring safety ...

Lithium Series, Parallel and Series and Parallel Connections

Introduction1. What is a BMS? Why do you need a BMS in your lithium battery?The lithium battery BMS, its design and primary purpose:2. How to connect lithium batteries in series4. How to charge lithium batteries in parallel4.1 Resistance is the enemy4.2 How to charge lithium batteries in parallel - from bad to best designsLithium battery banks using batteries with built-in Battery Management Systems (BMS) are created by connecting two or more batteries together to support a single application. Connecting multiple lithium batteries into a string of batteries allows us to build a battery bank with the potential to operate at an increased voltage, or with increased capacity. See more on assets.discoverbattery Evlithium



Understanding Parallel Connection of Lithium ...

By following the step-by-step guide provided in this article and considering the necessary precautions, you can successfully connect lithium batteries ...

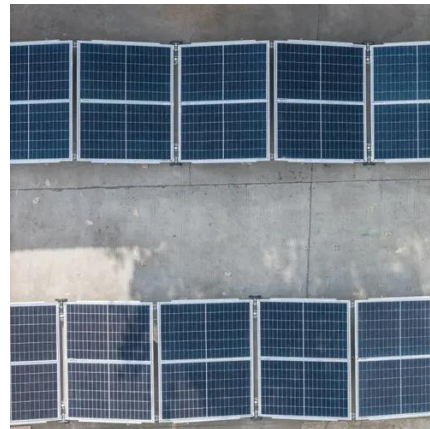
[How To Connect Batteries In Series and Parallel](#)



If you have two sets of batteries connected in series, you can wire both sets into a parallel connection to make a series-parallel battery bank. In the images below we will walk ...

[How to Connect Two or More Batteries in Series and Parallel](#)

In this page we will illustrate the different types of batteries used into most wind and solar power systems and we will teach you how to wire them together in series and in parallel, in order to ...



[Batteries in Series vs Parallel: Understand The Differences](#)

A: Yes, it's possible and often beneficial to combine series and parallel connections in a single battery bank. This configuration, known as series-parallel, allows you to increase both voltage ...



[Lithium Solar Batteries Series vs Parallel](#)

...

To connect batteries in parallel: Identify Terminals: As before, know which terminal is positive (+) and which is negative (-). Connect All ...





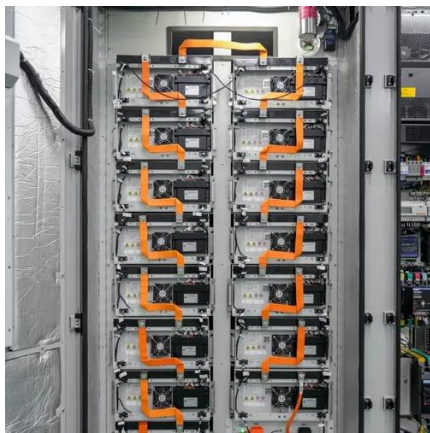
Lithium Series, Parallel and Series and Parallel Connections



As shown below in battery bank A, B, and C, making parallel connections of higher voltage lithium batteries increases the redundancy and overall performance of the electrical system versus ...

How to Connect Lithium Solar Batteries in Series

When setting up lithium solar batteries, understanding how to connect them in series or parallel is crucial for maximizing efficiency and ...



Lithium Solar Batteries Series vs Parallel Connection

To connect batteries in parallel: Identify Terminals: As before, know which terminal is positive (+) and which is negative (-). Connect All Positives Together: Link all positive ...

Series, Parallel, and Series-Parallel Connections of ...

To ensure optimal battery performance and longevity, it is essential to properly match batteries with similar characteristics, including capacity, ...





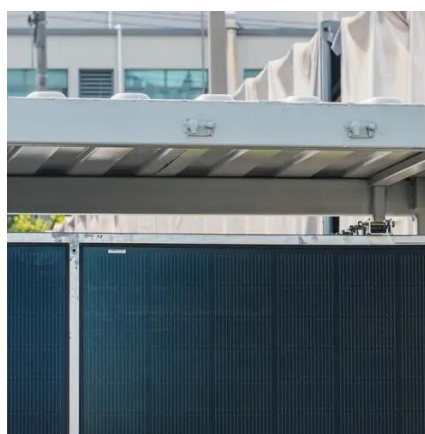
358-010232-07

Do not put any heavy objects on the battery. The batteries can be connected in parallel. Series connection is not allowed. Use in upright position only. The batteries are not allowed to ...



How to Connect Multiple Batteries for Solar: A Step-by-Step ...

Discover how to efficiently connect multiple batteries for your solar power system in this comprehensive guide. Learn the benefits of different battery types, including lead-acid and ...



[How To Connect Batteries In Series and Parallel](#)

If you have two sets of batteries connected in series, you can wire both sets into a parallel connection to make a series-parallel battery ...



Series, Parallel, and Series-Parallel Connections of Batteries

To ensure optimal battery performance and longevity, it is essential to properly match batteries with similar characteristics, including capacity, voltage, and chemistry, when connecting them ...





[How to Connect Lithium Solar Batteries in Series & Parallel](#)

When setting up lithium solar batteries, understanding how to connect them in series or parallel is crucial for maximizing efficiency and performance. Below, we delve into the ...





Contact Us

For inquiries, pricing, or partnerships:

<https://sccd-sk.eu>

Phone: +32 2 808 71 94

Email: info@sccd-sk.eu

Scan QR code for WhatsApp.

