



# Height of solar panels installed on roof





## Overview

---

Solar panels should be mounted at a height of 3.75" to 5.25" from the roof's surface to ensure optimal performance. This measurement takes into account the seam of the SSMR, typically 1.5" to 3" in height, the mounting hardware, adding approximately  $\frac{3}{4}$ " and the module frame .

Solar panels should be mounted at a height of 3.75" to 5.25" from the roof's surface to ensure optimal performance. This measurement takes into account the seam of the SSMR, typically 1.5" to 3" in height, the mounting hardware, adding approximately  $\frac{3}{4}$ " and the module frame .

Determining the correct solar panel height above roof affects energy output, roof longevity, and compliance with local codes. This article covers clearance recommendations, mounting methods, wind and snow considerations, and practical installation steps to help homeowners and installers make.

Choosing the right solar panel height above the roof is essential for performance, safety, and long-term durability. Proper height affects energy yield, wind resistance, maintenance access, and roof integrity. This article explains how to determine the ideal height for common roof types, mounting.

Choosing the correct solar panel height above the roof is essential for performance, safety, and long-term maintenance. The height impacts wind uplift resistance, snow shedding, air flow for cooling, ease of cleaning, and ease of electrical wiring. This article explains industry standards.

Determining the correct height to install solar panels above a roof is crucial for ensuring peak performance, durability, and safety. The height affects airflow beneath the panels, shading, maintenance access, and compliance with local building codes. This article explores the key factors.

Solar panels should be mounted at a height of 3.75" to 5.25" from the roof's surface to ensure optimal performance. This measurement takes into account the seam of the SSMR, typically 1.5" to 3" in height, the mounting hardware, adding approximately  $\frac{3}{4}$ " and the module frame, contributing another.

Professional Installation is Critical for Safety and Warranties: Solar panel mounting

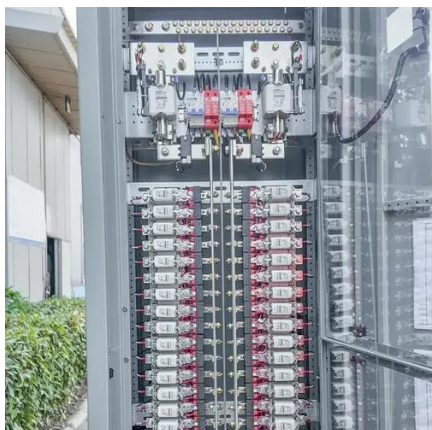


involves working at dangerous heights with structural modifications that can void warranties if done incorrectly. Professional installation typically includes 5-25 year warranties and ensures compliance with 2025.



## Height of solar panels installed on roof

---

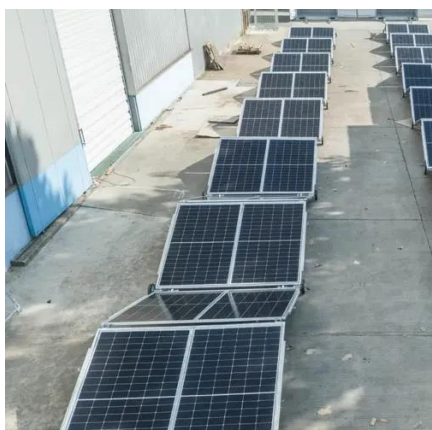


### [How High Off The Roof Should Solar Panels Be ...](#)

Solar panels should be mounted at a height of 3.75' to 5.25' from the roof's surface to ensure optimal performance. This measurement takes into ...

### **Optimal Solar Panel Height Above Roof for Maximum Efficiency ...**

This article explores the key factors influencing solar panel height, benefits of proper mounting, and practical guidelines for homeowners and installers in the United States.



### [Solar Panel Roof Requirements: What You Need to Know](#)

Evaluate your roof's orientation, pitch, and condition to ensure maximum solar exposure. Assess your roof's load-bearing capacity to support the weight of the solar panel ...

### [How High Off The Roof Should Solar Panels Be Mounted?](#)

Solar panels should be mounted at a height of 3.75' to 5.25' from the roof's surface to ensure optimal performance. This measurement takes



into account the seam of the SSMR, typically ...

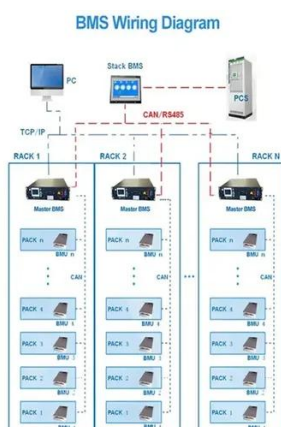
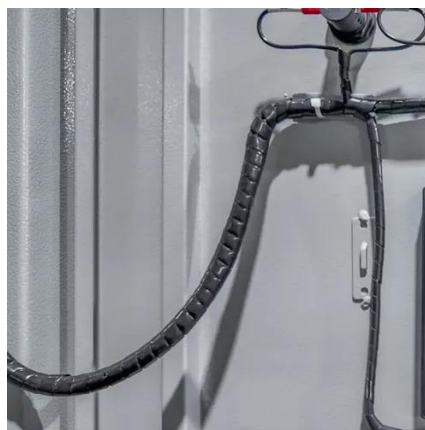


## Solar Panel Roof Requirements: What You Need ...

Evaluate your roof's orientation, pitch, and condition to ensure maximum solar exposure. Assess your roof's load-bearing capacity to ...

## Optimal Solar Panel Height Above Roof: Guidelines and ...

Choosing the right solar panel height above the roof is essential for performance, safety, and long-term durability. Proper height affects energy yield, wind resistance, ...



## **How High Should Photovoltaic Panels Be Installed on Your Roof?**

Solar panels aren't fashion accessories - they're heat-sensitive power generators. A 2023 NREL study showed panels mounted 6-8 inches above rooftops produced 15% more energy in ...





## Solar Panel Height Above Roof: Optimal Practices for Installation

Rooftop solar systems use several mounting approaches, each with typical height ranges above the roof surface. Understanding these options helps builders optimize height for ...



## Solar Panel Height Above Roof: Optimal Clearance and Installation

Several variables guide the ideal solar panel height above roof: roof type, local climate, wind exposure, desired tilt angle, and maintenance needs. Each project must balance ...



## Solar Panel Height Above Roof - Coast Roof Cleaning

Solar panels mounted too close to the roof may trap water and debris, leading to damage. To avoid this, installers ensure that the panel height accommodates the roof's pitch ...



## Solar Panel Height Above Roof: Optimal Clearance and ...

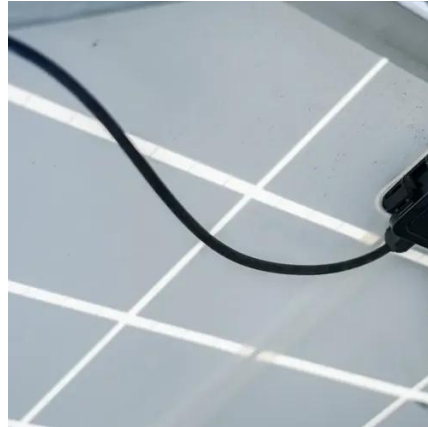
Several variables guide the ideal solar panel height above roof: roof type, local climate, wind exposure, desired tilt angle, and maintenance needs. Each project must balance ...





## Optimal Solar Panel Height Above Roof: Enhancing Efficiency ...

The ideal height typically ranges from 4 to 12 inches above the roof surface, depending on various installation factors. Most mounting hardware supports a minimum ...



## [How To Mount Solar Panels To The Roof:](#)

...

Learn how to safely mount solar panels to your roof with our step-by-step guide. Covers all roof types, tools needed, safety tips, and ...



## [How To Mount Solar Panels To The Roof: Complete 2025 Guide](#)

Learn how to safely mount solar panels to your roof with our step-by-step guide. Covers all roof types, tools needed, safety tips, and when to hire professionals.





## Contact Us

---

For inquiries, pricing, or partnerships:

<https://sccd-sk.eu>

Phone: +32 2 808 71 94

Email: [info@sccd-sk.eu](mailto:info@sccd-sk.eu)

Scan QR code for WhatsApp.

