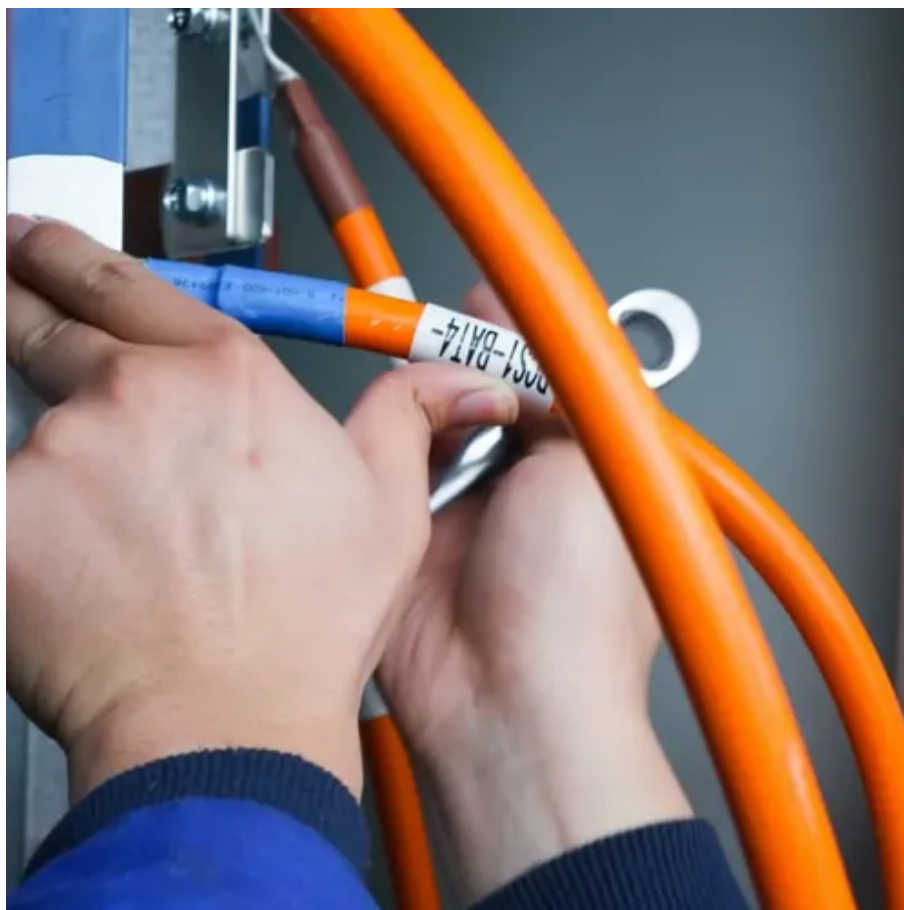




Heishan cylindrical solar container lithium battery winter charging





Overview

In this guide, we will explore the steps you need to take to prepare your lithium batteries for winter storage. We'll discuss how to choose the right storage location, clean and disconnect the batteries, and implement proper charging and discharging techniques.

In this guide, we will explore the steps you need to take to prepare your lithium batteries for winter storage. We'll discuss how to choose the right storage location, clean and disconnect the batteries, and implement proper charging and discharging techniques.

Charging problems: Difficulty recharging lithium batteries at temperatures below 0°C. LiFePO₄ lithium batteries, like the Delong Top Energy 5.12kWh available from Wattuneed, offer excellent resistance to cold, but require special precautions: "The Rousseau family, owners of a solar installation.

Renogy is here with the simple yet crucial steps to ensure optimal lithium battery storage, keeping your batteries ready to perform when you need them most and extending their valuable lifespan. A lack of awareness about these risks is a major problem in many workplaces. We provides a basic.

If your power comes from lithium, do you need to worry about a frozen battery this winter?

Let's find out, as we take a look at whether or not lithium batteries can freeze. What are Lithium Batteries?

Lithium-ion batteries, commonly referred to as LiFePO₄ battery, is at the forefront of battery.

Solar lithium batteries simplify energy storage, but cold weather can harm them. Knowing the right storage conditions prevents damage and ensures reliable power when you need it most. Lithium batteries should not be stored below -4°F (-20°C). Extreme cold reduces performance, causes permanent.

Back to our topic, let's now see how to store lithium batteries in the cold days of the winter season, including the dangers of leaving them lying around in freezing



temperatures. What Happens if Lithium Batteries Get Too Cold?

Your Li-ion battery pack can get very cold in the winter. This.

When temperatures drop below freezing, lithium batteries can experience reduced capacity and performance. But why exactly does this happen?

Let's dive into the science behind cold weather's impact on lithium batteries: -
Chemical reactions inside the battery slow down in cold temperatures- The.



Heishan cylindrical solar container lithium battery winter charging



[How To Store Lithium Batteries For The Winter , Storables](#)

In this guide, we will explore the steps you need to take to prepare your lithium batteries for winter storage. We'll discuss how to choose the right storage location, clean and ...

[2025 Guide to Lithium Ion Battery Winter Care](#)

Charge and Disconnect: Before the onset of severe cold, charge your lithium-ion battery to about 80% and then disconnect it. Store it in a warm, dry place away from direct ...



[Lithium battery storage box - LithiumSafe](#)

The LithiumSafe(TM) Battery Box is designed for safely storing, charging and transporting lithium ion batteries. The most intensively tested battery fire containment solution on the market, ...



[How to Store Lithium Batteries for the Winter](#)

Charge the battery to avoid self-drain reducing the state of charge, SoC, to unsafe levels. Many manufactures recommend charge levels between



50% and 100%. Disconnect ...

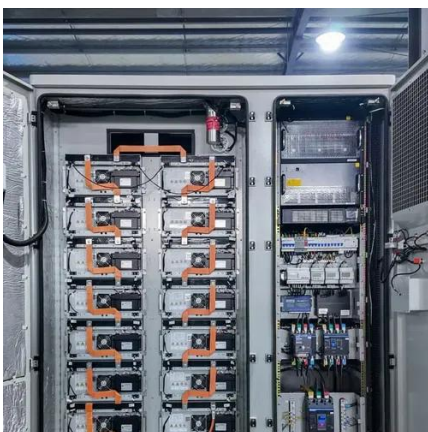


[Solar battery wintering: Complete winter storage guide 2025](#)

Winterizing solar batteries is crucial to maintaining the performance and longevity of your solar kit. With the onset of winter temperatures, your lithium batteries need special care to ...

[Lithium Batteries in Cold Weather: How to Store Them Safely?](#)

Lithium batteries power solar systems but need protection from cold. Store them above freezing, monitor temperatures, and never charge when frozen for optimal performance ...



Amazon : Lithium Ion Battery Storage

Discover high-quality lithium battery storage bags built to contain fires and explosions. Versatile solutions for all your battery needs.



[How to Store Lithium Batteries Safely: Off-Grid ...](#)

Before long-term storage (3-6 months or more), charge the battery to between 60-80% capacity. Keeping a record of the storage dates or the ...



How to Store Lithium Batteries

Some key factors to consider for storing lithium batteries include temperature, charge level, and environment. Lithium-based batteries need proper attention because improper storage can ...

[Lithium Batteries in Cold Weather: How to Store ...](#)

Lithium batteries power solar systems but need protection from cold. Store them above freezing, monitor temperatures, and never charge ...



How to Store Lithium Batteries Safely: Off-Grid Essential Guide

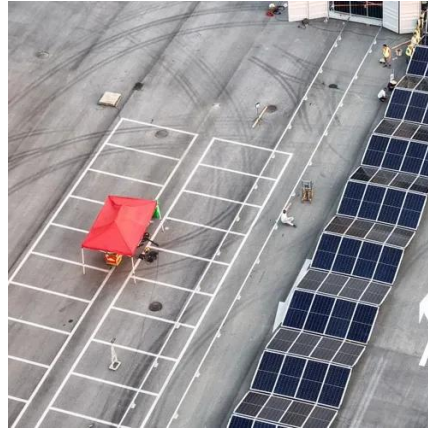
Before long-term storage (3-6 months or more), charge the battery to between 60-80% capacity. Keeping a record of the storage dates or the last charge dates is advisable because batteries ...





Cold Weather and Lithium Batteries: Tips for Winter Use

A: Charging lithium batteries in very cold temperatures (below 32°F or 0°C) is generally not recommended and can be unsafe. Charging in extreme cold can lead to lithium plating, which ...





Contact Us

For inquiries, pricing, or partnerships:

<https://sccd-sk.eu>

Phone: +32 2 808 71 94

Email: info@sccd-sk.eu

Scan QR code for WhatsApp.

