



# High quality winch circuit breaker factory Factory



- ✓ **ALL IN ONE**
- ✓ **100Kw/174Kwh  
High Capacity**
- ✓ **Intelligent  
Integration**





## Overview

---

To protect your winch in 2026, choose circuit breakers like the RED WOLF 250A or 300A models, which offer waterproof, dustproof, and heavy-duty performance. Look for features like manual reset, appropriate current ratings, and easy installation to ensure safety and reliability.

To protect your winch in 2026, choose circuit breakers like the RED WOLF 250A or 300A models, which offer waterproof, dustproof, and heavy-duty performance. Look for features like manual reset, appropriate current ratings, and easy installation to ensure safety and reliability.

Each electric winch requires one circuit breaker. Harken offers four panel-mount, high-amperage circuit breakers. They are compact, waterproof, weather-resistant, and ignition-protected. Circuit breakers are available for 12- or 24-volt DC systems.

A winch's electrical system is susceptible to overloads, short circuits, and high amperage draws, making a circuit breaker or similar protection essential for operational safety and system longevity. It helps ensure safe and reliable operation by interrupting the power in case of an overload or.

To protect your winch in 2026, choose circuit breakers like the RED WOLF 250A or 300A models, which offer waterproof, dustproof, and heavy-duty performance. Look for features like manual reset, appropriate current ratings, and easy installation to ensure safety and reliability. These breakers are.

A marine winch circuit breaker is a critical safety device designed to protect electrical circuits that power winches used in cargo handling, towing, and lifting operations—especially in harsh marine and industrial environments. These breakers prevent overloads, short circuits, and voltage spikes.

Learn why a manual reset circuit breaker is the only safe way to power your high-current off-road and marine equipment. You've invested thousands of dollars in your rig. You have a 12,000lb winch ready to pull you out of the deepest mud, or a 3000W inverter setup to power your off-grid adventures.

Suitable for some winch installations, these inline breakers are rated to trip at 300



amp. They are marine rated so suitable for installation on boats, caravans, 4x4 and trucks including under-bonnet installations. This item is a recurring or deferred purchase. By continuing, I agree to the and. What is a circuit breaker for a winch?

A circuit breaker for a winch is a device that protects the electrical system from overload. When power comes into the circuit, it automatically goes to each device in turn. It shuts off if it senses an overload. This protects the winch and any other devices connected to it from getting damaged in case of an electrical emergency.

Does a Harken electric winch need a circuit breaker?

All components sold separately. Each electric winch requires one circuit breaker. Harken offers four panel-mount, high-amperage circuit breakers. They are compact, waterproof, weather-resistant, and ignition-protected. Circuit breakers are available for 12- or 24-volt DC systems.

What is a vacuum circuit breaker?

Eaton's vacuum circuit breakers provide centralized control and protection of medium-voltage power equipment and circuits in utility, industrial, commercial, mining and marine installations involving generators, motors, feeder circuits, and transmission and distribution lines.

What are Eaton circuit breakers?

Get all of the fundamentals of circuit breakers. Eaton's complete line up of low and medium voltage circuit breakers provide circuit protection in alternative energy, commercial, industrial, mining, and military applications, while protecting against overloads and short circuits in conductors.



## High quality winch circuit breaker factory Factory

---



### [High-Amp Circuit Breaker Guide: How to Wire Winches](#)

Installing a 12,000lb winch or 3000W inverter? Stop using fuses. Learn how to size and install a manual reset circuit breaker (up to 300A). Ignition protected and marine rated for ...

### [Do You Need a Circuit Breaker for a Winch?](#)

Discover the essential guide on whether you need a circuit breaker for your winch. Explore detailed insights into winch capacity, ...



### [Sherpa 4x4 Circuit Breaker 300A Inline](#)

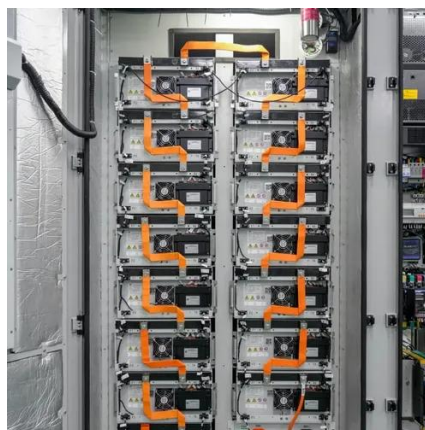
These breakers are ideal for protecting cables from loads exceeding 300 amps. The breaker will withstand short peaks over 300 amps but will generally break at the rated setting.

### [Circuit breakers , Electrical circuit breakers , Eaton](#)

Learn how we've joined forces with Siemens Energy to fast-track data center construction and reduce deployment timelines by up to two years.



Eaton's low and medium-voltage circuit ...



## Winch Circuit Breakers

Shop high-quality winch circuit breakers from reliable suppliers. Enjoy durable, efficient, and affordable solutions for your automotive and marine needs.

## Circuit Breakers , Harken

Each electric winch requires one circuit breaker. Harken offers four panel-mount, high-amperage circuit breakers. They are compact, waterproof, weather-resistant, and ignition-protected. ...



## Circuit Protection Products: Circuit Breakers & Fuse Links

Complete line of circuit protection products that include hydraulic-magnetic circuit breakers, thermal circuit breakers, equipment leakage and ground fault circuit breakers, as well as fuse ...







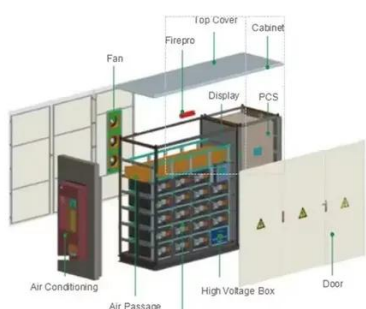
## Circuit Breakers - Anchor Winch

Designed specifically for marine use, these circuit breakers safeguard your winch motor and electrical system from overloads, short circuits, and unexpected power surges--keeping your ...



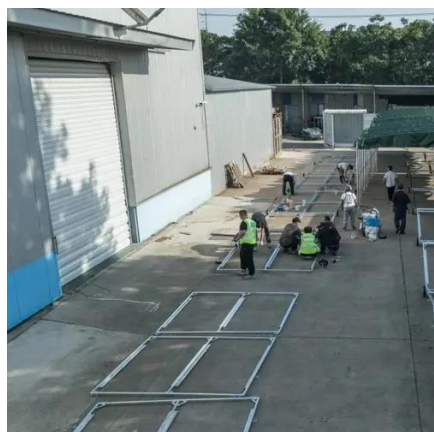
## Circuit Breakers , Harken

Each electric winch requires one circuit breaker. Harken offers four panel-mount, high-amperage circuit breakers. They are compact, waterproof, ...



## 7 Best Circuit Breakers for Winches in 2026: Reliable Power ...

To protect your winch in 2026, choose circuit breakers like the RED WOLF 250A or 300A models, which offer waterproof, dustproof, and heavy-duty performance. Look for ...



## Winch Circuit Breaker , etrailer

Perfect for davit applications, this Ground Fault Circuit Interrupter Breaker protects the wiring of your AC StrongArm electric winch and your power source from water damage.



## [Do You Need a Circuit Breaker for a Winch?](#)

Discover the essential guide on whether you need a circuit breaker for your winch. Explore detailed insights into winch capacity, usage, vehicle compatibility, and alternatives like ...





## Contact Us

---

For inquiries, pricing, or partnerships:

<https://sccd-sk.eu>

Phone: +32 2 808 71 94

Email: [info@sccd-sk.eu](mailto:info@sccd-sk.eu)

Scan QR code for WhatsApp.

