



How big a battery should I use for two 200w solar panels





Overview

As the 200w solar panel produces about 60-90Ah per day, you need two 12v 100Ah lead-acid batteries. Can a 200W solar panel charge a 100Ah battery?

In short, Yes. A 200W solar panel will fully charge a 12v 100Ah battery from 100% depth of discharge in about 7.5 peak sun hours.

As the 200w solar panel produces about 60-90Ah per day, you need two 12v 100Ah lead-acid batteries. Can a 200W solar panel charge a 100Ah battery?

In short, Yes. A 200W solar panel will fully charge a 12v 100Ah battery from 100% depth of discharge in about 7.5 peak sun hours.

A Solar Panel and Battery Sizing Calculator is an invaluable tool designed to help you determine the optimal size of solar panels and batteries required to meet your energy needs. By inputting specific details about your energy consumption, this calculator provides tailored insights into the solar.

Whether you're powering a fridge in your 4WD, lights at a campsite, or going fully off-grid, this guide will walk you through how to calculate the right size solar panel and battery system for your needs. Start by listing all the devices you plan to run and how long you'll run them each day. Step.

This article will guide you through the process of selecting the perfect battery size for your 200W solar panel. You'll learn how to calculate your energy needs and find the best options that fit your lifestyle and budget. By the end, you'll feel confident in making an informed decision that keeps.

To size a battery for solar, know how much energy you use, what your panels produce, and how much backup you need. Factors like battery depth of discharge, temperature, and overall costs will help you choose. Using the wrong battery size can lead to power shortages or higher costs. Have a solar pro.

For those using a 200-watt solar panel, you first need to answer the question: How many batteries do I need for a 200 watt solar panel?

When using a solar panel 200 watt 12 volt, the perfect match of battery you can

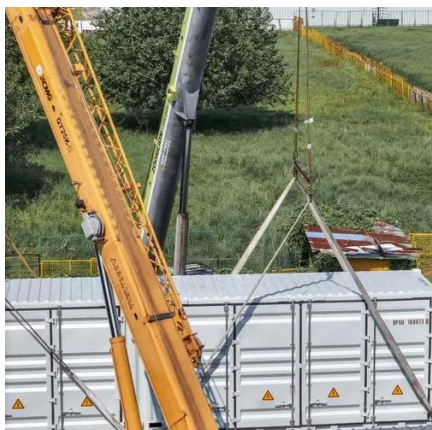


use is a 12-volt 40Ah 500-watt-hours battery. That said, when it comes to the.

Generally, for a 200 watt solar panel, you need 12v 100Ah lithium or 12v 200Ah lead-acid battery. For your convenience, here's a chart with recommended battery sizes for a 200-watt solar panel in different states. Note: This calculation is based on the number of peak sun hours your state receives.



How big a battery should I use for two 200w solar panels



[What Size Battery for 200W Solar Panel?](#)

What size battery for 200w solar panel? In this post i shared 3 simple steps to calculate the accurate battery for your 200 watt solar panel.

[Battery For 200W Solar Panel \(What You Need\)](#)

We know that a 12V 100ah battery would be optimal for the 200W solar panel, but depending on what you are prepared to spend will dictate the type of battery you buy. The ...



[How To Size Battery For Solar Like a Pro](#)

Choosing the right battery for your solar system is essential. Start by calculating your energy needs using watt-hours. Consider how many cloudy days you might experience. ...

Sizing Your Solar System: Panel & Battery Calculators Simplified

To find the right battery size, convert watt-hours to amp-hours (Ah) using the formula: Battery Ah = (Total Wh ÷ Battery Voltage) Now consider depth



of discharge (DoD) ...



[Solar Battery Calculator - Size Your Solar Storage Easily](#)

Getting your components properly sized with a solar battery calculator is crucial for efficiency and reliability. Follow this straightforward guide to calculate exactly what you ...



[How To Calculate the Right Size Battery For Solar ...](#)

To size a battery for solar, know how much energy you use, what your panels produce, and how much backup you need. Factors like ...



How To Calculate the Right Size Battery For Solar Energy ...

To size a battery for solar, know how much energy you use, what your panels produce, and how much backup you need. Factors like battery depth of discharge, ...





[Solar Panel and Battery Sizing Calculator](#)

Specify the solar panel wattage you plan to use. The result will estimate how many panels you need to meet your energy goals. Enter the battery storage capacity, allowing the ...



[Solar Battery Calculator: How to Size Your Solar Panels, ...](#)

Consider sunlight availability, panel efficiency, and size to determine the correct number of solar panels. Calculate your daily energy consumption by adding the wattage of all the devices you ...



[How Many Batteries Do I Need for a 200 Watt ...](#)

When using a solar panel 200 watt 12 volt, the perfect match of battery you can use is a 12-volt 40Ah 500-watt-hours battery. That said, ...



[Solar Panel and Battery Sizing Calculator](#)

Specify the solar panel wattage you plan to use. The result will estimate how many panels you need to meet your energy goals. Enter the ...



What Size Battery for 200W Solar Panel: A Complete Guide to ...

Discover the perfect battery size for your 200W solar panel in our comprehensive guide. Learn to calculate your energy needs and avoid overspending on excess capacity.



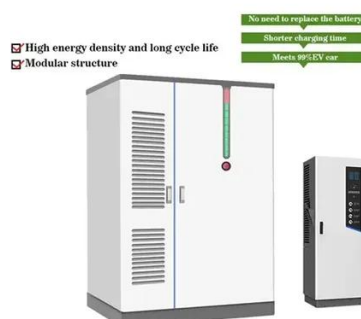
[How Many Batteries Do I Need for a 200 Watt Solar Panel?](#)

When using a solar panel 200 watt 12 volt, the perfect match of battery you can use is a 12-volt 40Ah 500-watt-hours battery. That said, when it comes to the number of battery ...



[What Size Battery for 200W Solar Panel? \(Explained!\)](#)

What size battery for 200w solar panel? In this post i shared 3 simple steps to calculate the accurate battery for your 200 watt solar panel.





Contact Us

For inquiries, pricing, or partnerships:

<https://sccd-sk.eu>

Phone: +32 2 808 71 94

Email: info@sccd-sk.eu

Scan QR code for WhatsApp.

