



How big an inverter is needed for 40kw solar power generation





Overview

At a minimum, you'll need a 4,000-watt solar inverter. Ideally, you'll have a solar inverter closer to 6,000 watts. Choose your inverter: You may undersize or oversize your inverter, but it can impact your energy output if you go overboard. Keep in mind that this is only an.

At a minimum, you'll need a 4,000-watt solar inverter. Ideally, you'll have a solar inverter closer to 6,000 watts. Choose your inverter: You may undersize or oversize your inverter, but it can impact your energy output if you go overboard. Keep in mind that this is only an.

Choosing the right solar inverter is critical to getting the most out of your photovoltaic (PV) system. Many DIY installers and homeowners ask, " what size solar inverter do I need?

" This guide will walk you through an easy, step-by-step process to accurately size your inverter, avoid common.

Choosing the right solar inverter size is critical—and one of the most common questions: what solar inverter size do I need?

Whether you are installing a rooftop system in California, powering a remote cabin in Alberta, or sizing for a community center in Rajasthan, getting it right means.

The right solar inverter sizing helps ensure your system performs efficiently, qualifies for incentives, and doesn't cost you more than necessary. So, what size solar inverter do you need?

In most cases, the inverter size should be close to the size of your solar panel system, within a 33% ratio.

A properly sized solar inverter typically lasts 10-15 years, though premium or microinverter units can reach 20-25 years with good maintenance. Think of inverter sizing like choosing the right-sized engine for your car. Too small, and you'll struggle on hills. Too large, and you're paying for power.

Generally, it's recommended to size the inverter to 80-100% of the DC system's



rated capacity. Before determine the inverter size, the most important thing is to calculate your average daily power consumption (kWh) and calculate your solar panel array size to match your power consumption. You could.

This guide breaks down what size solar inverter you actually need—so your setup runs smooth, efficient, and stress-free from day one. What Size Solar Inverter Do I Need?

A solar inverter should closely match your solar system's output in kW—typically within 80% to 120% of your total panel capacity. How big should a solar inverter be?

Generally, it's recommended to size the inverter to 80-100% of the DC system's rated capacity. Before determine the inverter size, the most important thing is to calculate your average daily power consumption (kWh) and calculate your solar panel array size to match your power consumption. You could follow our to make this estimation.

How much wattage does a solar inverter need?

A good rule of thumb is to multiply the total wattage of your solar panels by 1.25 to account for inefficiencies and potential load spikes. For example, if you have a 5 kW solar system, you would need an inverter rated for at least 6.25 kW. Q: What happens if my inverter is too small for my solar panel system?

.

How many inverters do you need for a 12 kW solar system?

Inverter: one or two inverters of a combined 10 kW–15 kW A 12 kW solar installation in a farm near Berlin utilized a 10 kW inverter with excellent results—saving a couple of hundred dollars on initial cost and still registering peak output. 3. Equate Load Requirements, Not Panel Watts It's not solely about sunlight—actual usage matters, too.

Why should you choose a solar inverter size?

Inverters play a vital role in converting the direct current (DC) generated by your solar panels into usable alternating current (AC) for your home. Selecting the proper inverter size ensures that your solar system operates at its full potential, ultimately impacting energy savings and system longevity.



How big an inverter is needed for 40kw solar power generation

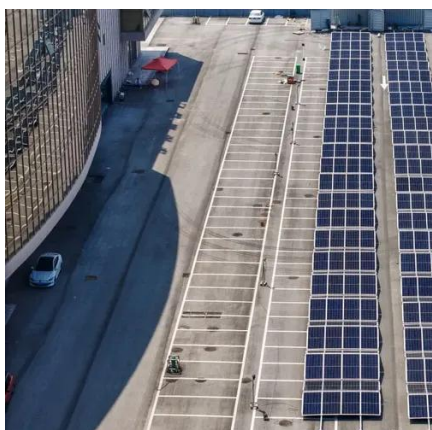


[Solar Inverter Sizing Guide for Maximum Efficiency , Mingch](#)

In most cases, the inverter size should be close to the size of your solar panel system, within a 33% ratio. For example, a 6.6kW solar array often pairs with a 5kW inverter to ...

[What Size Solar Inverter Do I Need? Experts Break It Down](#)

What Size Solar Inverter Do I Need? A solar inverter should closely match your solar system's output in kW--typically within 80% to 120% of your total panel capacity.



Solar Panel Inverter Size Calculator: Know What You Need , Angi

For this reason, you should choose a solar inverter that's similar in size to the DC rating of your solar array, the collective number of panels feeding into the inverter. The DC ...

[What Size Solar Inverter Do I Need? A Quick ...](#)

This guide will walk you through an easy, step-by-step process to accurately size your inverter, avoid common pitfalls, and highlight how our Lefor



...



[Inverter Size Calculator - self2solar](#)

Choosing the right inverter size is essential for a reliable and efficient solar power system. Our Inverter Size Calculator simplifies this task by accurately estimating the ...



[Inverter Size Calculator - self2solar](#)

Choosing the right inverter size is essential for a reliable and efficient solar power system. Our Inverter Size Calculator simplifies this ...



[What Size Solar Inverter Do I Need? Experts ...](#)

What Size Solar Inverter Do I Need? A solar inverter should closely match your solar system's output in kW--typically within 80% to ...





What size inverter do I need?

Sizing your inverter depends on your load profile, environmental factors, and inverter specs.



[Solar Inverter Sizing Guide: How to Size Your Inverter](#)

Learn how to properly size your solar inverter with our complete guide. Discover the optimal DC-to-AC ratio and avoid costly sizing mistakes.

[What size inverter do I need for solar panels](#)

In this post, you will learn how to determine the right inverter size tailored for your specific solar setup. Power Requirements: Assess ...



[What size inverter do I need for solar panels](#)

In this post, you will learn how to determine the right inverter size tailored for your specific solar setup. Power Requirements: Assess the total wattage of all appliances you ...



[What Size Solar Inverter Do I Need? A Quick Sizing Guide](#)

This guide will walk you through an easy, step-by-step process to accurately size your inverter, avoid common pitfalls, and highlight how our Lefor Solar Inverter Series can fit your specific ...



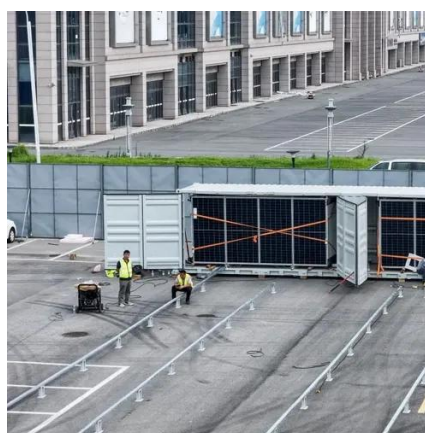
[Solar Inverter Sizing Guide for Maximum Efficiency ...](#)

In most cases, the inverter size should be close to the size of your solar panel system, within a 33% ratio. For example, a 6.6kW solar ...



[How To Size A Solar Inverter in 3 Easy Steps](#)

Oversizing or having an inverter that is too big for your solar panels will not produce enough electricity. Undersizing or having an inverter that's too small will convert a limited amount of ...



[Solar Inverter Sizing Guide: How to Size Your Inverter](#)

Learn how to properly size your solar inverter with our complete guide. Discover the optimal DC-to-AC ratio and avoid costly ...



[How to Choose the Right Size Solar Inverter: Step ...](#)

This guide walks you through calculating inverter size based on panel capacity, power usage, and safety margins. We use real ...



How to Choose the Right Size Solar Inverter: Step-by-Step with ...

This guide walks you through calculating inverter size based on panel capacity, power usage, and safety margins. We use real examples from installations in Texas and ...



Contact Us

For inquiries, pricing, or partnerships:

<https://sccd-sk.eu>

Phone: +32 2 808 71 94

Email: info@sccd-sk.eu

Scan QR code for WhatsApp.

