



# How big an inverter should I use for a 60kw solar power station





## Overview

---

Generally, it's recommended to size the inverter to 80-100% of the DC system's rated capacity. Before determine the inverter size, the most important thing is to calculate your average daily power consumption (kWh) and calculate your solar panel array size to match your power.

Generally, it's recommended to size the inverter to 80-100% of the DC system's rated capacity. Before determine the inverter size, the most important thing is to calculate your average daily power consumption (kWh) and calculate your solar panel array size to match your power.

Choosing the right solar inverter size is critical—and one of the most common questions: what solar inverter size do I need?

Whether you are installing a rooftop system in California, powering a remote cabin in Alberta, or sizing for a community center in Rajasthan, getting it right means.

A perfectly sized solar inverter ensures you're maximizing the energy your panels produce, avoiding unnecessary losses, and setting your home up for long-term savings. Whether you're planning a new solar installation or upgrading your existing setup, understanding inverter sizing can feel.

This guide breaks down what size solar inverter you actually need—so your setup runs smooth, efficient, and stress-free from day one. What Size Solar Inverter Do I Need?

A solar inverter should closely match your solar system's output in kW—typically within 80% to 120% of your total panel capacity.

A properly sized solar inverter typically lasts 10-15 years, though premium or microinverter units can reach 20-25 years with good maintenance. Think of inverter sizing like choosing the right-sized engine for your car. Too small, and you'll struggle on hills. Too large, and you're paying for power.

Choosing the right solar inverter is critical to getting the most out of your photovoltaic (PV) system. Many DIY installers and homeowners ask, “ what size solar inverter do I need?



" This guide will walk you through an easy, step-by-step process to accurately size your inverter, avoid common.

The right inverter transforms your solar panel's DC electricity into usable AC power while optimizing system efficiency and protecting your equipment. Size it wrong, and you'll face reduced output, shortened equipment life, or unnecessary costs. Your solar inverter should typically match 80-100% of.



## How big an inverter should I use for a 60kw solar power station

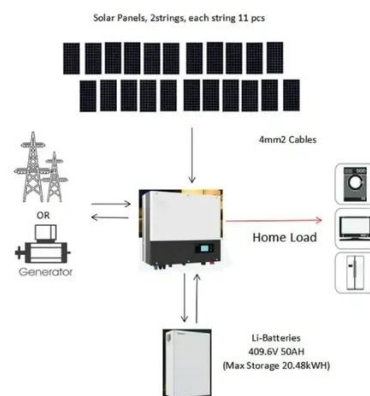


### Solar inverter size: Calculate the right size for your inverter

Inverters are usually sized lower than the kilowatt peak (kWp) of the solar array because solar panels rarely achieve peak power. The solar array-to-inverter ratio is calculated by dividing the ...

### [What Size Solar Inverter Do I Need? Experts Break It Down](#)

What Size Solar Inverter Do I Need? A solar inverter should closely match your solar system's output in kW--typically within 80% to 120% of your total panel capacity.



### [Solar inverter size: Calculate the right size for your ...](#)

Inverters are usually sized lower than the kilowatt peak (kWp) of the solar array because solar panels rarely achieve peak power. The solar array-to ...

### [Solar Inverter Sizing Guide: How to Size Your Inverter](#)

Learn how to properly size your solar inverter with our complete guide. Discover the optimal DC-to-AC ratio and avoid costly ...



## [What Size Solar Inverter Do I Need? A Quick Sizing Guide](#)

This guide will walk you through an easy, step-by-step process to accurately size your inverter, avoid common pitfalls, and highlight how our Lefor Solar Inverter Series can fit your specific ...



## [Inverter Size Calculator - self2solar](#)

Choosing the right inverter size is essential for a reliable and efficient solar power system. Our Inverter Size Calculator simplifies this task by accurately estimating the ...



## [How To Size A Solar Inverter in 3 Easy Steps](#)

We explain the key concepts that determine solar inverter sizing including your power needs, the type and number of solar panels you need, and the length of your wires.







## [How To Size A Solar Inverter in 3 Easy Steps](#)

We explain the key concepts that determine solar inverter sizing including your power needs, the type and number of solar panels you need, and ...

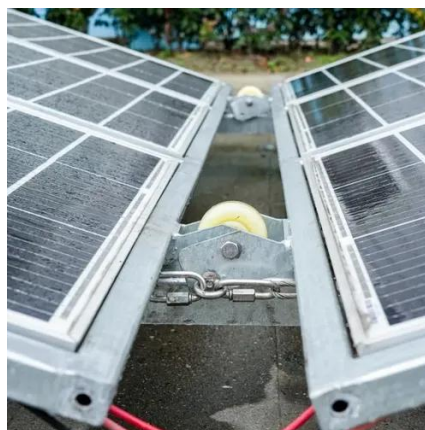


## [How to Choose the Right Size Solar Inverter: Step ...](#)

This guide walks you through calculating inverter size based on panel capacity, power usage, and safety margins. We use real ...

## [Solar Inverter Sizing Guide for Maximum Efficiency ...](#)

In most cases, the inverter size should be close to the size of your solar panel system, within a 33% ratio. For example, a 6.6kW solar ...



## [Solar Inverter Sizing Guide: How to Size Your Inverter](#)

Learn how to properly size your solar inverter with our complete guide. Discover the optimal DC-to-AC ratio and avoid costly sizing mistakes.



## What Size Solar Inverter Do I Need? Experts ...

What Size Solar Inverter Do I Need? A solar inverter should closely match your solar system's output in kW--typically within 80% to ...



## Right-Sizing Your Solar Inverter: Power Up Like a Pro

Successful solar inverter sizing balances technical requirements with practical considerations. Start by calculating your energy consumption and solar array output, then ...



## What Size Solar Inverter Do I Need? A Quick ...

This guide will walk you through an easy, step-by-step process to accurately size your inverter, avoid common pitfalls, and highlight how our Lefor ...

**Outdoor Cabinet BESS**  
50 kWh/500 kWh Battery Storage System  
Industrial and Commercial Energy Storage

- All In One**  
Integrating battery packs
- High-capacity**  
50-500kWh
- Degree of Protection**  
IP54
- Operating Temperature Range**  
-20~60°C (Derating above 50 °C)
- Intelligent Integration**  
Integrated photovoltaic storage cabinet
- Rated AC Power**  
50-100kW
- Altitude**  
3000m(>3000m derating)



## **How to Choose the Right Size Solar Inverter: Step-by-Step with ...**

This guide walks you through calculating inverter size based on panel capacity, power usage, and safety margins. We use real examples from installations in Texas and ...



## [Solar Inverter Sizing Guide for Maximum Efficiency , Mingch](#)

In most cases, the inverter size should be close to the size of your solar panel system, within a 33% ratio. For example, a 6.6kW solar array often pairs with a 5kW inverter to ...



## **How to Determine the Right Solar Inverter Size for Your System**

Choosing the right solar inverter size isn't just a technical detail--it's one of the most important steps in designing an efficient, cost-effective solar energy system. A perfectly ...

## [Inverter Size Calculator - self2solar](#)

Choosing the right inverter size is essential for a reliable and efficient solar power system. Our Inverter Size Calculator simplifies this ...







## Contact Us

---

For inquiries, pricing, or partnerships:

<https://sccd-sk.eu>

Phone: +32 2 808 71 94

Email: [info@sccd-sk.eu](mailto:info@sccd-sk.eu)

Scan QR code for WhatsApp.

