



How big an inverter should I use for a 800w single-phase motor





Overview

What are the different solar inverter sizes?

Solar generators range in size from small generators for short camping trips to large off-grid power systems for a boat or house. Consequently, inverter sizes vary greatly. During our research, we discovered that most inverters range in size from 300 watts up to over 3000 watts. In this article, we guide you through the different inverter sizes.

Do I need an inverter size chart?

The need for an inverter size chart first became apparent when researching our DIY solar generator build. Solar generators range in size from small generators for short camping trips to large off-grid power systems for a boat or house. Consequently, inverter sizes vary greatly.

How much power does a 5 kW inverter use?

If your system pushes 5,000 watts, a 5,000-watt (or 5 kW) inverter is usually the move. But it's not always one-to-one. Some setups undersize the inverter a bit—say, 4.6 kW for 5 kW of panels—to save cash without losing much power. It's a balancing act between cost, performance, and when you actually use electricity.

What is inverter size?

Inverter size is measured in watts (W) and depends on two key specs: * Important: Your inverter must cover both the total running watts of all devices plus the highest surge wattage of any single appliance. 3. Step-by-Step: How to Calculate Your Inverter Size Include: Home: Fridge, lights, TV, microwave, AC



How big an inverter should I use for a 800w single-phase motor

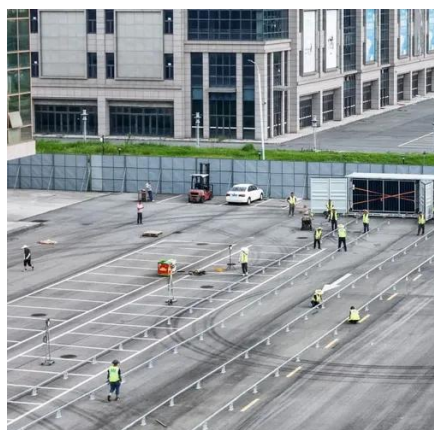


[What Size Inverter Do I Need? A Complete Guide for DIY ...](#)

Choosing the right inverter size is key to getting efficient power delivery without problems like tripping, clipping, or wasted energy. Correct inverter sizing determines how ...

[Elections & Electoral Roll » Shire of Plantagenet](#)

Councillors are elected for terms of four years in Western Australia. Elections are held every two years for half of the council, and candidates are elected using an optional preferential voting ...



Saleyards

In 2012 the Shire of Plantagenet made a commitment to improving the welfare of animals housed at the saleyards and undertook the purchase of 700 Surefoot soft floor mats.

What Size Inverter Do I Need?

Finding the proper inverter size for your needs is as simple as adding together the necessary wattages of the items that you're looking to power.



[Management Team » Shire of Plantagenet](#)

The Shire of Plantagenet Executive Management Team is headed by the Chief Executive Officer and three Executive Managers who manage the operations of the Shire.

News Story

The Shire offers a warm welcome to our newest Australian citizens: Khatima Alizada from Afghanistan, Ney Rosedo from the Phillipines, and Fabian Stein from Germany.



[How to Choose the Right Size Solar Inverter: Step ...](#)

This guide walks you through calculating inverter size based on panel capacity, power usage, and safety margins. We use real ...



[Visitor Information and Attractions » Shire of Plantagenet](#)

Whether your tastes run to internationally recognised wines or the breathtaking beauty of ancient mountain ranges, the Plantagenet region has plenty to discover. The region is complemented ...



Outdoor Cabinet BESS
50 kWh/500 kWh Battery Storage System
Industrial and Commercial Energy Storage

- All in One**
Integrating battery packs
- High-capacity**
50-500kWh
- Degree of Protection**
IP54
- Operating Temperature Range**
-20-60°C (Derating above 50 °C)
- Intelligent Integration**
integrated photovoltaic storage cabinet
- Rated AC Power**
50-100kW
- Altitude**
3000m(>3000m derating)

[What Size Solar Inverter Do I Need? Experts Break It Down](#)

Here's the cheat code: your inverter size should match your solar panel output. If your system pushes 5,000 watts, a 5,000-watt (or 5 kW) inverter is usually the move. But it's ...

[Where are We » Shire of Plantagenet](#)

The Shire of Plantagenet acknowledges the traditional custodians of our area and their continuing connection to the land and community. We pay our respects to all members of the Menang ...



[Inverter Size Calculator - self2solar](#)

Generally, the inverter should be sized to match about 80-100% of your system's DC rating. For example, if you have a 5 kW solar array, you might choose a 5 kW inverter. ...



[Inverter Size Calculator - self2solar](#)

Generally, the inverter should be sized to match about 80-100% of your system's DC rating. For example, if you have a 5 kW ...



Inverter Size Calculator Guide: Choose The Right Capacity For ...

For most household applications, a power factor of 0.8 is common. This means that a 1000VA inverter can typically handle around 800 watts of load. Use our online tool Circuit ...

[Shire of Plantagenet Contact Details](#)

Shire of Plantagenet Contact Details Alternatively, call in and speak to a staff member in our Administration Centre, Lowood Road, Mount Barker. Office hours are 9.00am to 4.15pm ...



[Library Services » Shire of Plantagenet](#)

The library is a member of the Southern Western Australia Library Consortium, which gives members access to the catalogues of 14 regional libraries. The library provides free wifi access.



[The Only Inverter Size Chart You'll Ever Need](#)

We have created a comprehensive inverter size chart to help you select the correct inverter to power your ...



What Size Inverter Do You Need? A Complete Guide for Home, ...

Choosing the right inverter size is crucial--too small, and your appliances won't work; too large, and you'll waste money. This guide will help you determine the ideal inverter ...

[Solar Inverter Sizing Guide: How to Size Your Inverter](#)

Learn how to properly size your solar inverter with our complete guide. Discover the optimal DC-to-AC ratio and avoid costly sizing mistakes.



[Food Safety & Premises » Shire of Plantagenet](#)

If you prepare food for sale or sell food in a residential home, you are still deemed to be a food business under the Food Act 2008 and therefore must comply with all food laws and register ...



[Inverter Size Calculator Guide: Choose The Right ...](#)

For most household applications, a power factor of 0.8 is common. This means that a 1000VA inverter can typically handle around ...

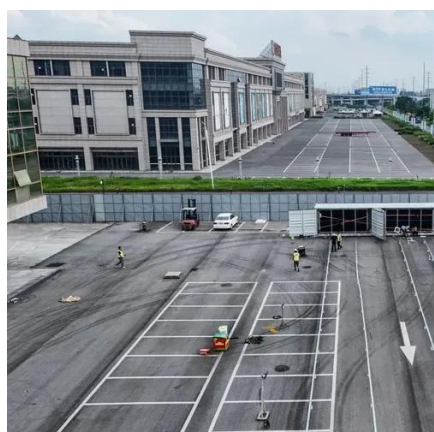


How to Choose the Right Size Solar Inverter: Step-by-Step with ...

This guide walks you through calculating inverter size based on panel capacity, power usage, and safety margins. We use real examples from installations in Texas and ...

[How To Size A Solar Inverter in 3 Easy Steps](#)

Choose an inverter that has a surge watt rating equal to or greater than this value. As for voltage drop, check the wire length between your solar panels and the batteries. If the wire length is ...



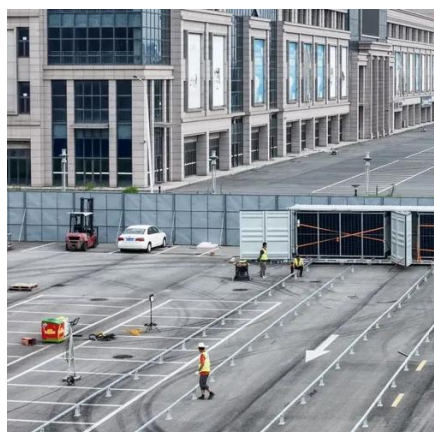
[The Only Inverter Size Chart You'll Ever Need](#)

We have created a comprehensive inverter size chart to help you select the correct inverter to power your appliances.



[Solar Inverter Sizing Guide: How to Size Your Inverter](#)

Learn how to properly size your solar inverter with our complete guide. Discover the optimal DC-to-AC ratio and avoid costly ...



[What Size Solar Inverter Do I Need? Experts ...](#)

Here's the cheat code: your inverter size should match your solar panel output. If your system pushes 5,000 watts, a 5,000-watt (or 5 ...

Home » Shire of Plantagenet

The Shire of Plantagenet acknowledges the traditional custodians of our area and their continuing connection to the land and community. We pay our respects to all members of the Menang ...





Contact Us

For inquiries, pricing, or partnerships:

<https://sccd-sk.eu>

Phone: +32 2 808 71 94

Email: info@sccd-sk.eu

Scan QR code for WhatsApp.

