



# How big an inverter should I use for an 8kw solar panel





## Overview

---

Ready to size your inverter?

Follow this proven process: Calculate your total panel capacity Count your panels and multiply by their wattage rating. Example: 20 panels × 400 watts = 8,000 watts (8kW) Apply the DC-to-AC ratio Divide your array capacity by your target ratio. Planning.

Ready to size your inverter?

Follow this proven process: Calculate your total panel capacity Count your panels and multiply by their wattage rating. Example: 20 panels × 400 watts = 8,000 watts (8kW) Apply the DC-to-AC ratio Divide your array capacity by your target ratio. Planning.

Your inverter size should match your solar array's capacity, not your electricity bill. This means your inverter doesn't need to power your entire home—it just converts whatever your panels generate. Let's say you have a 6kW solar array (twenty 300-watt panels). Your inverter needs to handle that.

This guide breaks down what size solar inverter you actually need—so your setup runs smooth, efficient, and stress-free from day one. What Size Solar Inverter Do I Need?

A solar inverter should closely match your solar system's output in kW—typically within 80% to 120% of your total panel capacity.

Real-World Performance Gap: 8kW inverters typically produce 5.9-7.2kW under optimal conditions, not their full nameplate rating. This 15-25% reduction is normal due to temperature, shading, and system losses that don't exist in laboratory test conditions. Hybrid Inverters Offer Future-Proofing:.

Choosing the right solar inverter size is critical—and one of the most common questions: what solar inverter size do I need?

Whether you are installing a rooftop system in California, powering a remote cabin in Alberta, or sizing for a community center in Rajasthan, getting it right means.



The size of your solar inverter should be similar to the DC rating of your system. An array-to-inverter ratio will tell you how closely you need to match the DC output. The average solar inverter has a 1.15 to 1.25 array-to-inverter ratio. Oversized inverters lose efficiency and undersized.

Generally, it's recommended to size the inverter to 80-100% of the DC system's rated capacity. Before determine the inverter size, the most important thing is to calculate your average daily power consumption (kWh) and calculate your solar panel array size to match your power consumption. You could.



## How big an inverter should I use for an 8kw solar panel

---



### [Solar Inverter Sizing Guide: How to Size Your Inverter](#)

Learn how to properly size your solar inverter with our complete guide. Discover the optimal DC-to-AC ratio and avoid costly ...

### [How to Choose the Right Size Solar Inverter: Step ...](#)

This guide walks you through calculating inverter size based on panel capacity, power usage, and safety margins. We use real ...



### [Inverter Size Calculator - self2solar](#)

Choosing the right inverter size is essential for a reliable and efficient solar power system. Our Inverter Size Calculator simplifies this task by accurately estimating the ...

### [Solar Inverter Sizing Guide: How to Size Your Inverter](#)

Learn how to properly size your solar inverter with our complete guide. Discover the optimal DC-to-AC ratio and avoid costly sizing mistakes.



## How to Choose the Right Size Solar Inverter: Step-by-Step with ...

This guide walks you through calculating inverter size based on panel capacity, power usage, and safety margins. We use real examples from installations in Texas and ...

### [What Size Solar Inverter Do I Need? Experts Break It Down](#)

What Size Solar Inverter Do I Need? A solar inverter should closely match your solar system's output in kW--typically within 80% to 120% of your total panel capacity.



### [8kW Solar Inverter: Complete Buyer's Guide & Top Models 2025](#)

Q: What size house needs an 8kW solar inverter?  
A: An 8kW solar inverter is typically suitable for homes between 2,000-3,500 square feet with moderate to high electricity ...





## [How To Size A Solar Inverter in 3 Easy Steps](#)

In this guide, we share 3 easy steps on how to size a solar inverter correctly. We explain the key concepts that determine solar inverter sizing including your power needs, the type and number ...

Test certification  
CE FCC



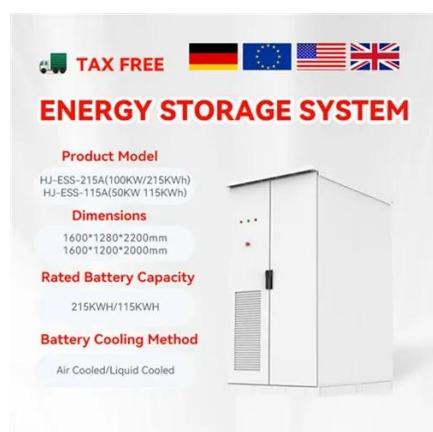
## **Solar Panel Inverter Size Calculator: Know What You Need , Angi**

Planning to install solar panels? You'll need a solar inverter. Follow this guide to calculate the best solar panel inverter size for your system.

## [8kW Solar Inverter: Complete Buyer's Guide & Top ...](#)

Q: What size house needs an 8kW solar inverter?

A: An 8kW solar inverter is typically suitable for homes between 2,000-3,500 square ...



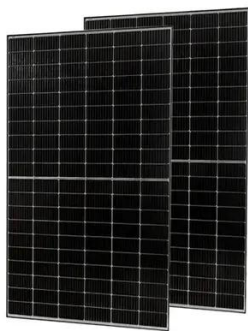
## [What Size Solar Inverter Do I Need? Experts ...](#)

What Size Solar Inverter Do I Need? A solar inverter should closely match your solar system's output in kW--typically within 80% to ...



## [Solar Inverter Sizing Guide for Maximum Efficiency , Mingch](#)

This article explains how to calculate your inverter size, what affects it, and how to avoid costly mistakes, especially when using high-efficiency solutions like MINGCH Electrical's ...



## **How to Match Solar Panel Inverter Size to Your System Output**

Most solar professionals recommend sizing your inverter for solar panels between 75% and 115% of your total panel wattage, with the sweet spot around 1:1.15 --meaning your ...

## **How to Determine the Right Solar Inverter Size for Your System**

Choosing the right solar inverter size isn't just a technical detail--it's one of the most important steps in designing an efficient, cost-effective solar energy system. A perfectly ...





## Contact Us

---

For inquiries, pricing, or partnerships:

<https://sccd-sk.eu>

Phone: +32 2 808 71 94

Email: [info@sccd-sk.eu](mailto:info@sccd-sk.eu)

Scan QR code for WhatsApp.

