



# How big is a 10mw solar inverter





## Overview

---

According to an average figure of 150 Watt per square meter, 10MW would need a panel area of about 67,000 square meters. Allowing 20% extra space for accessibility, this increases to 80,000 square meters, or 8 hectares.

According to an average figure of 150 Watt per square meter, 10MW would need a panel area of about 67,000 square meters. Allowing 20% extra space for accessibility, this increases to 80,000 square meters, or 8 hectares.

The single machine power is between 3-60kW, and the mainstream models have a single machine power of 30-40kW, suitable for small and medium-sized photovoltaic systems, small and medium-sized rooftop photovoltaic power generation systems, and small ground power stations. Single unit size of inverter.

Solar inverters convert the direct current (DC) electricity produced by solar panels to alternating current (AC) electricity, which is used to power home appliances and electronic devices. While there are several types of inverters including hybrid, grid-tie, and off-grid inverters they all perform.

Whereas string inverters are the preferred choice in large commercial or utility scale applications where there is minimal shading. If your home is unshaded, a string inverter, being more economical, could produce the same amount of power for less money, making it the better solution. To help you.

According to an average figure of 150 Watt per square meter, 10MW would need a panel area of about 67,000 square meters. Allowing 20% extra space for accessibility, this increases to 80,000 square meters, or 8 hectares. This total cost includes: solar modules, inverters, fixed racking or tracking.

Consequently, inverter sizes vary greatly. During our research, we discovered that most inverters range in size from 300 watts up to over 3000 watts. In this article, we guide you through the different inverter sizes. Additionally, you'll learn what appliances you can power and how you can select.

A properly sized solar inverter typically lasts 10-15 years, though premium or microinverter units can reach 20-25 years with good maintenance. Think of inverter sizing like choosing the right-sized engine for your car. Too small, and



you'll struggle on hills. Too large, and you're paying for power.



## How big is a 10mw solar inverter

---



### [How to Choose the Right Size Solar Inverter: Step ...](#)

This guide walks you through calculating inverter size based on panel capacity, power usage, and safety margins. We use real ...

### Solar Inverter Size Chart

Inverter Size (Greater Than 100W) Again, the power consumption given here is for general estimates only. TVs, laptops, microwaves etc. come in various shapes and sizes. To get more ...



### [Solar Panel Inverter Size Calculator: Know What ...](#)

Homeowners can size slightly down or up to find the right fit for their setup. Your solar inverter size doesn't need to match the DC rating ...

### [Solar Inverter Sizing Guide: How to Size Your Inverter](#)

Learn how to properly size your solar inverter with our complete guide. Discover the optimal DC-to-AC ratio and avoid costly sizing mistakes.



## [The Only Inverter Size Chart You'll Ever Need](#)

During our research, we discovered that most inverters range in size from 300 watts up to over 3000 watts. ...

## [The Only Inverter Size Chart You'll Ever Need](#)

During our research, we discovered that most inverters range in size from 300 watts up to over 3000 watts. In this article, we guide you through the different inverter sizes. ...



## [Everything You Need to Know About Inverter Sizing](#)

It is best when the total capacity of your solar panels (DC size) is slightly bigger than the peak capacity of your inverters (AC size). To set up an efficient solar system, we ...





## Size of inverter for solar power

The required size of inverter for solar power can be calculated based on the total power of the solar panel and its average daily/monthly power consumption. Generally ...



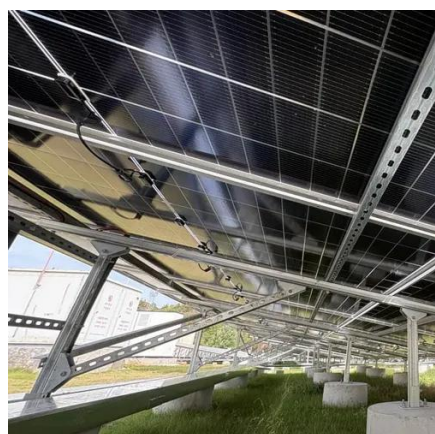
## Size of inverter for solar power

The required size of inverter for solar power can be calculated based on the total power of the solar panel and its average ...



## China 10MW Utility scale on Grid Solar Power System Suppliers

According to an average figure of 150 Watt per square meter, 10MW would need a panel area of about 67,000 square meters. Allowing 20% extra space for accessibility, this increases to ...



## [Solar Inverter Sizing Guide for Maximum Efficiency ...](#)

This article explains how to calculate your inverter size, what affects it, and how to avoid costly mistakes, especially when using high ...



## [Solar Inverter Sizing Guide for Maximum Efficiency , Mingch](#)

This article explains how to calculate your inverter size, what affects it, and how to avoid costly mistakes, especially when using high-efficiency solutions like MINGCH Electrical's ...



## [How To Size A Solar Inverter in 3 Easy Steps](#)

In this guide, we share 3 easy steps on how to size a solar inverter correctly. We explain the key concepts that determine solar inverter sizing including your power needs, the type and number ...

## [How To Size A Solar Inverter in 3 Easy Steps](#)

It is best when the total capacity of your solar panels (DC size) is slightly bigger than the peak capacity of your inverters (AC size). To set up an efficient solar system, we ...



## **How to Choose the Right Size Solar Inverter: Step-by-Step with ...**

This guide walks you through calculating inverter size based on panel capacity, power usage, and safety margins. We use real examples from installations in Texas and ...



## [Solar Inverter Sizing Guide: How to Size Your Inverter](#)

Learn how to properly size your solar inverter with our complete guide. Discover the optimal DC-to-AC ratio and avoid costly ...



## **Solar Panel Inverter Size Calculator: Know What You Need , Angi**

Homeowners can size slightly down or up to find the right fit for their setup. Your solar inverter size doesn't need to match the DC rating of your solar panel array exactly. ...

## **Solar Inverter Size Chart**

Inverter Size Chart  
How to Calculate Inverter Size  
Inverter Size Frequently Asked Questions  
What Is Inverter Watt Rating?  
Conclusion  
The right way to size an inverter is to check the wattage. The inverter wattage must be the same or greater than your solar panel's watts. Here is a chart that shows the watts consumption of various appliances and what inverter size you will need. Note that this guide includes a 20% safety margin for the inverter watts. T...  
See more on portablesolarexpert DS New Energy



## **China 10MW Utility scale on Grid Solar Power System Suppliers**

According to an average figure of 150 Watt per square meter, 10MW would need a panel area of about 67,000 square meters. Allowing 20% extra space for accessibility, this increases to ...





## Contact Us

---

For inquiries, pricing, or partnerships:

<https://sccd-sk.eu>

Phone: +32 2 808 71 94

Email: [info@sccd-sk.eu](mailto:info@sccd-sk.eu)

Scan QR code for WhatsApp.

