



How big is a rooftop solar panel





How big is a rooftop solar panel

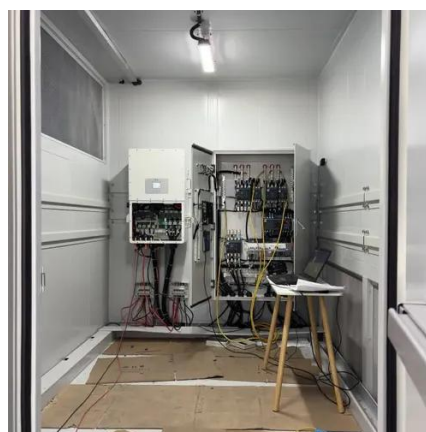


[Solar Panel Size And Weight: A Comprehensive Guide](#)

Solar panels take up a defined amount of space. Larger panels deliver more electricity per unit, which means fewer panels overall, ...

[Rooftop Solar Panel Size and Layout Guide](#)

Currently, the most common monocrystalline modules on the market measure between 1.6-2.3 m in length, 1-1.3 m in width, and about ...



How Big Are Solar Panels? Here's Their Typical Size and Weight

So a typical, residential rooftop solar system with 25 panels would take up about 375 square feet of roof space, but the size of your specific system will depend on your energy consumption. If

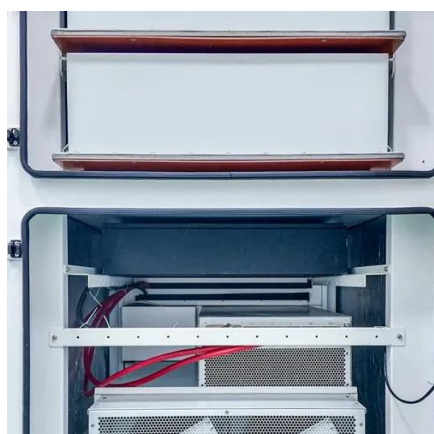
[Solar Panel Size Guide , Best Panel Size for Your ...](#)

Learn how to choose the ideal solar panel size for your home. Get expert tips, standard dimensions, and a size chart to simplify your ...



How Big are Solar Panels?

Residential panels are the standard size for residential rooftop installations. They are around 65 inches by 39 inches, the most common type of solar panel used to power homes. Large ...



How Big are Solar Panels?

Residential panels are the standard size for residential rooftop installations. They are around 65 inches by 39 inches, the most common type of solar ...



[Standard Solar Panel Sizes And Wattages \(100W-500W ...](#)

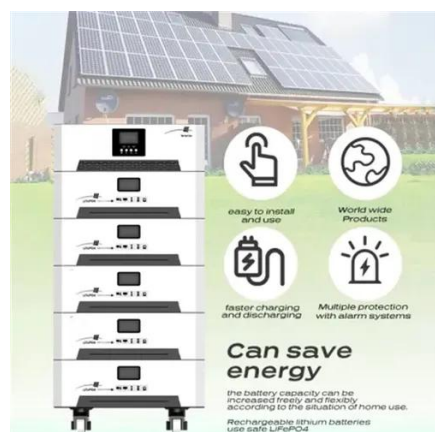
The goal here is to get to the average solar panel size by wattage. You can find typical dimensions of 100W, 150W, 170W, 200W, 200W, 220W, 300W, 350W, 400W, and 500W solar ...





[Solar Panel Size & Dimensions Guide 2025](#) [. Complete Specs](#)

In this comprehensive guide, you'll learn everything you need to know about solar panel sizing, from standard dimensions to weight considerations, helping you determine the ...



[Solar Panel Size And Weight: A Comprehensive Guide](#)

When considering residential solar panels, typical configurations consist of 60 cells measuring approximately 3.25 feet by 5.5 feet. These panels cover an area of 17.62 square feet and weigh

[Solar Panel Size Guide: Find the Best Fit for Your Roof](#)

When it comes to solar, there isn't a one-size-fits-all solution. The standard solar panel size depends on how many solar cells it contains, and that choice plays a big role in both ...



[Rooftop Solar Panel Size and Layout Guide](#)

Currently, the most common monocrystalline modules on the market measure between 1.6-2.3 m in length, 1-1.3 m in width, and about 30-40 mm in thickness. The ...



[How Big Are Solar Panels? Solar Panel Size and Weight](#)

Solar panels take up a defined amount of space. Larger panels deliver more electricity per unit, which means fewer panels overall, but they also demand more ...



[Solar Panel Size Guide , Best Panel Size for Your Roof](#)

Learn how to choose the ideal solar panel size for your home. Get expert tips, standard dimensions, and a size chart to simplify your solar decisions.

[How Big is a Solar Panel? A Guide to Solar Panel Dimensions](#)

For residential solar panels, the panels measure an average of 65 inches (5.4 feet) by 39 inches (3.25 feet), covering an area of 17.25 square feet. This measurement may vary ...



[Standard Solar Panel Sizes And Wattages \(100W ...](#)

The goal here is to get to the average solar panel size by wattage. You can find typical dimensions of 100W, 150W, 170W, 200W, 200W, 220W, ...



[How Big Are Solar Panels? Here's Their Typical ...](#)

So a typical, residential rooftop solar system with 25 panels would take up about 375 square feet of roof space, but the size of your specific system ...

GRADE A BATTERY

LiFePO4 battery will not burn when overcharged, over discharged, overcurrent or short circuit and can withstand high temperatures without decomposition.





Contact Us

For inquiries, pricing, or partnerships:

<https://sccd-sk.eu>

Phone: +32 2 808 71 94

Email: info@sccd-sk.eu

Scan QR code for WhatsApp.

