



# How big is a rural solar panel





## Overview

---

For a residential solar panel, size is fairly consistent across manufacturers: 65 inches (1.65 meters) by 39 inches (1 meter) is the average solar panel size that you find on the roofs of houses. That is about 5.4 feet long and 3.25 feet wide, which equates to around 15 square feet.

For a residential solar panel, size is fairly consistent across manufacturers: 65 inches (1.65 meters) by 39 inches (1 meter) is the average solar panel size that you find on the roofs of houses. That is about 5.4 feet long and 3.25 feet wide, which equates to around 15 square feet.

Most residential solar panels measure between 65 to 75 inches long and 39 to 41 inches wide, delivering power outputs ranging from 250 to 400 watts per panel. Understanding these dimensions is crucial for homeowners planning their solar installation, as panel size directly impacts system.

Understanding solar panel dimensions is crucial for planning your solar system installation, maximizing efficiency, and ensuring compatibility with your available space. In this blog, we'll break down the standard sizes of solar panels, explain how panel dimensions impact performance, and help you.

For a residential solar panel, size is fairly consistent across manufacturers: 65 inches (1.65 meters) by 39 inches (1 meter) is the average solar panel size that you find on the roofs of houses. That is about 5.4 feet long and 3.25 feet wide, which equates to around 15 square feet. This is.



## How big is a rural solar panel

---



### Solar Panel Sizes: Choosing the Right Dimensions for Any Project

Solar panel "size" actually refers to two key measurements: These two factors work together to determine your system's efficiency, cost, and performance. The trick is finding the ...

### How big are solar panels?

Standard 60-cell solar panels are approximately 65 in x 39 in (5.4 ft x 3.25 ft, or 17.55 sq ft). Newer or higher wattage panels may have slightly different dimensions. Besides ...



### How big are solar panels?

Standard 60-cell solar panels are approximately 65 in x 39 in (5.4 ft x 3.25 ft, or 17.55 sq ft). Newer or higher wattage panels may have ...

### [Solar Panel Size Guide , Best Panel Size for Your ...](#)

Solar cells are assembled in grids, and the most common configurations are 60-cell panels for residential use and 72-cell panels for ...



### [How Big is a Solar Panel? The Solar Panel Size Guide](#)

For a residential solar panel, size is fairly consistent across manufacturers: 65 inches (1.65 meters) by 39 inches (1 meter) is the average solar panel size that you find on the roofs of ...



### [Solar Panel Sizes: Choosing the Right Dimensions ...](#)

Solar panel "size" actually refers to two key measurements: These two factors work together to determine your system's efficiency, ...



### [Detailed Guide to Solar Panel Size & Dimensions](#)

Choosing the proper system is not only about the solar panel dimensions. You should also consider wattage, number of cells, layout ...





## [Standard Solar Panel Sizes And Wattages \(100W-500W ...](#)

It takes up 6.07 sq ft of area. If you have a 1000 sq ft roof, and you can use 75% of that roof area for solar panels, you can theoretically put 123 100-watt solar panels on a 1000 sq ft roof. A ...



## [Solar Panel Size & Dimensions Guide 2025 . Complete Specs](#)

In this comprehensive guide, you'll learn everything you need to know about solar panel sizing, from standard dimensions to weight considerations, helping you determine the ...

## [Detailed Guide to Solar Panel Size & Dimensions](#)

Choosing the proper system is not only about the solar panel dimensions. You should also consider wattage, number of cells, layout possibilities, and energy consumption. ...



## [The Ultimate Solar Panel Size Guide for Every Homeowner](#)

Solar panel size is a fundamental metric in any solar installation. The physical dimensions of a panel determine the number of solar cells it contains, which directly affects its ...



## [Understanding Solar Panel Dimensions In 2025: A ...](#)

Explore the most common solar panel dimensions in 2025, including residential and commercial sizes. Learn how solar panel size ...



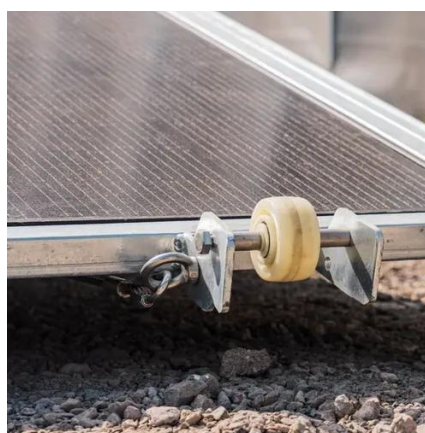
## [Standard Solar Panel Sizes And Wattages \(100W ...](#)

It takes up 6.07 sq ft of area. If you have a 1000 sq ft roof, and you can use 75% of that roof area for solar panels, you can theoretically put 123 100 ...



## [Perfect Solar Panel Sizes for Your Home \(Expert Sizing Guide\)](#)

Today's residential solar panels come in remarkably consistent sizes, making it easier for homeowners to plan their solar installations. A typical residential solar panel ...



## [Solar Panel Size Guide , Best Panel Size for Your Roof](#)

Solar cells are assembled in grids, and the most common configurations are 60-cell panels for residential use and 72-cell panels for commercial or utility use. A 60-cell panel ...





## Understanding Solar Panel Dimensions In 2025: A Complete Size

...

Explore the most common solar panel dimensions in 2025, including residential and commercial sizes. Learn how solar panel size dimensions affect power, installation, and ...





## Contact Us

---

For inquiries, pricing, or partnerships:

<https://sccd-sk.eu>

Phone: +32 2 808 71 94

Email: [info@sccd-sk.eu](mailto:info@sccd-sk.eu)

Scan QR code for WhatsApp.

