



How big is solar energy per watt





Overview

On average, a solar panel produces around 150 to 200 watts per square meter. This can vary due to: Example: A 1.7 m² panel with 20% efficiency will produce about 340W in full sun. Note: Monocrystalline panels lead in efficiency, making them ideal for rooftops with limited space.

On average, a solar panel produces around 150 to 200 watts per square meter. This can vary due to: Example: A 1.7 m² panel with 20% efficiency will produce about 340W in full sun. Note: Monocrystalline panels lead in efficiency, making them ideal for rooftops with limited space.

Solar panels degrade slowly, losing about 0.5% output per year, and often last 25–30 years or more. Most residential panels in 2025 are rated 250–550 watts, with 400-watt models becoming the new standard. A 400-watt panel can generate roughly 1.6–2.5 kWh of energy per day, depending on local.

How Much Energy Does a Solar Panel Produce in 2025?

Modern Solar Panel Output: In 2025, standard residential solar panels produce 390–500 watts, with high-efficiency models exceeding 500 watts. A typical 400-watt panel generates 1,500–2,500 kWh annually depending on location, with systems in sunny.

Solar power production is measured in watts (W), kilowatts (kW), and kilowatt-hours (kWh). Here is a quick breakdown of what each of these terms mean: Watts (W): Watts are a basic unit of power that indicates the rate at which energy is generated or consumed. Kilowatts (kW): A kilowatt is equal to.

Wattage refers to the amount of electrical power a solar panel can produce under standard test conditions (STC), which simulate a bright sunny day with optimal solar irradiance (1,000 W/m²), a cell temperature of 25°C, and clean panels. In simpler terms, a panel's wattage rating tells you its.

Solar power is measured in watts, 2. The energy output varies based on technology and location, 3. On average, one solar panel generates 300–400 watts, 4. Large solar power plants can produce megawatts of electricity. Furthermore, the amount of energy produced is contingent upon several factors.



How big is solar energy per watt



[How Much Energy Does a Solar Panel Produce?](#)

Most home solar panels are sorted by their energy output. If you see a solar panel listed as 400 watts, you know its output under ideal conditions will be 400 watts. Power output ...

[How Much Energy Does A Solar Panel Produce? - Forbes Home](#)

These days, the latest and best solar panels for residential properties produce between 250 and 400 Watts of electricity. While solar panel systems start at 1 KW and produce between 750 ...



[How much power does solar energy equal? , NenPower](#)

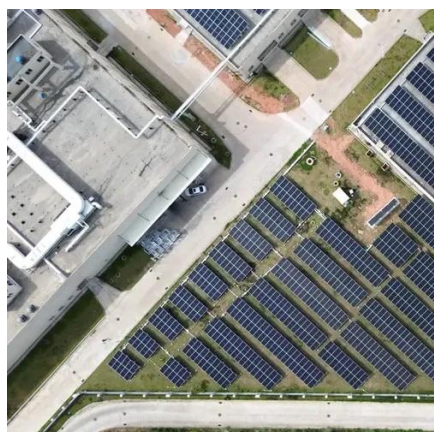
In a practical context, a standard solar panel, often rated between 250 to 400 watts, determines the overall power output of a solar array. For instance, if one were to install ...

[Solar Panel Wattage Explained: How Many Watts Do You Need?](#)

Confused about solar panel wattage? Learn how many watts you need, how solar output works, and how to calculate the right solar setup for your



home, RV, or cabin.



[Solar Panel Sizes and Wattage Explained](#)

Over 179 (GW) of solar capacity is installed nationwide and it's capable of powering roughly 33 million homes. While it takes roughly 17 (400-watt) panels to power a home.

[How Much Energy Does a Solar Panel Produce in 2025?](#)

In 2025, standard residential solar panels produce between 390-500 watts of power, with high-efficiency models reaching 500+ watts. However, the actual energy output ...



[How much power do solar panels produce? , Trinity Solar](#)

Most solar panels used in residential settings can produce between 300 W and 800 W per hour. Because of current technology and average peak sun hours, common residential solar panels ...



How Much Power Does a Solar Panel Produce?

Residential solar panels typically produce between 250 and 400 watts per hour--enough to power a microwave oven for 10-15 minutes. As of 2020, the average U.S. ...



How Much Energy Does A Solar Panel Produce?

Most residential panels in 2025 are rated 250-550 watts, with 400-watt models becoming the new standard. A 400-watt panel can generate roughly 1.6-2.5 kWh of energy ...

How Much Power Does a Solar Panel Produce?

How Much Energy Does A Solar Panel produce?How to Calculate Daily Solar Panel Power OutputWhat Factors Determine Solar Panel output?Types of Solar PanelsSolar panels contain layers of semiconductor materialsthat capture sunlight and transform it into direct current (DC) electricity, which is measured in watts. Smaller devices sometimes need a few watts to operate, while larger appliances and home systems require a larger quantity called kilowatts (1,000 watts). Energy usage is ...See more on todayshomeowner trinitysolar



How much power do solar panels produce?

Most solar panels used in residential settings can produce between 300 W and 800 W per hour. Because of current technology and average peak ...



How Much Energy Does a Solar Panel Produce?

Most home solar panels are sorted by their energy output. If you see a solar panel listed as 400 watts, you know its output under ideal ...

How Much Energy Does A Solar Panel Produce?

Most residential panels in 2025 are rated 250-550 watts, with 400-watt models becoming the new standard. A 400-watt panel can ...



Solar Panel Wattage & Output Explained

Most residential solar panels in 2025 are rated between 350W and 480W, while commercial modules can exceed 600W. How do manufacturers determine wattage? They test ...



Contact Us

For inquiries, pricing, or partnerships:

<https://sccd-sk.eu>

Phone: +32 2 808 71 94

Email: info@sccd-sk.eu

Scan QR code for WhatsApp.

