



How big is the electrochemical energy storage field





How big is the electrochemical energy storage field

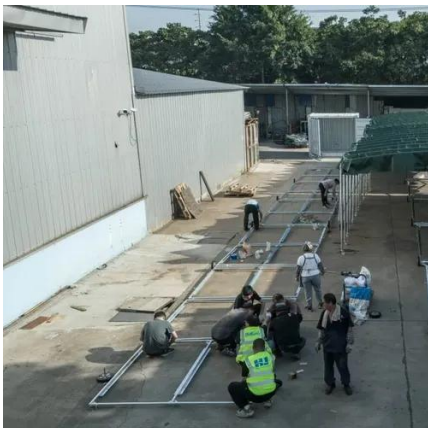


Bjarke Ingels Group

Our latest transformation is the BIG LEAP: Bjarke Ingels Group of Landscape, Engineering, Architecture, Planning and Products. A plethora of in-house perspectives allows us to see ...

Biosphere , BIG , Bjarke Ingels Group

BIG's aim was to amplify Treehotel's focus on sustainability and natural tourism, and create a resilient design in a region with strong seasonal climatic contrasts.



The Mountain , BIG , Bjarke Ingels Group

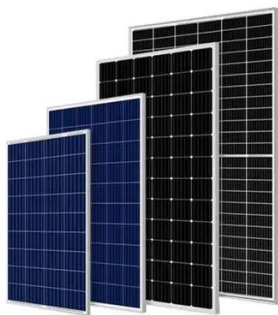
The Mountain is a hybrid combining the splendors of a suburban lifestyle: a house with a big garden where children can play, with the metropolitan qualities of a penthouse view and a ...

Hamburg State Opera , BIG , Bjarke Ingels Group

Shaped by the movement of the water, the surrounding park is designed by BIG Landscape and manages storm surges through sloping



terraces, vegetated dunes, and wetland gardens that ...



[WeGrow NYC , BIG , Bjarke Ingels Group](#)

BIG has grown organically over the last two decades from a founder, to a family, to a force of 700. Our latest transformation is the BIG LEAP: Bjarke Ingels Group of Landscape, Engineering, ...

[Jinji Lake Pavilion , BIG , Bjarke Ingels Group](#)

Our latest transformation is the BIG LEAP: Bjarke Ingels Group of Landscape, Engineering, Architecture, Planning and Products. A plethora of in-house perspectives allows us to see ...



[Freedom Plaza , BIG , Bjarke Ingels Group](#)

Freedom Plaza will extend BIG's contribution to New York City's waterfront, alongside adjacent coastal projects that include the East Side Coastal Resiliency project, the Battery Park City ...



BIG , Bjarke Ingels Group

Throughout the building, warm wood cladding and concrete floors are accented with the school's signature colors of red and gold. The BIG-designed interiors are designed to accommodate ...



BIG , Bjarke Ingels Group

BIG has grown organically over the last two decades from a founder, to a family, to a force of 700. Our latest transformation is the BIG LEAP: Bjarke Ingels Group of Landscape, Engineering, ...

[The Spiral , BIG , Bjarke Ingels Group](#)

Developed by Tishman Speyer and built by Turner, the commercial high-rise was designed by BIG in collaboration with Adamson Associates and structural engineer WSP Cantor Seinuk. ...





Contact Us

For inquiries, pricing, or partnerships:

<https://sccd-sk.eu>

Phone: +32 2 808 71 94

Email: info@sccd-sk.eu

Scan QR code for WhatsApp.

