



How big of an inverter can a family car be equipped with





Overview

“Most family cars do best with 1,000W inverters. They handle common devices without taxing the alternator.” – EK SOLAR Technical Team Your car battery’s ampere-hour (Ah) rating determines runtime. A 60Ah battery can theoretically support a 600W load for 1 hour ($600W \div 12V = 50A$; 60Ah).

“Most family cars do best with 1,000W inverters. They handle common devices without taxing the alternator.” – EK SOLAR Technical Team Your car battery’s ampere-hour (Ah) rating determines runtime. A 60Ah battery can theoretically support a 600W load for 1 hour ($600W \div 12V = 50A$; 60Ah).

To determine the maximum size of an inverter that your car can handle, you need to know its electrical system’s capacity. Your car’s electrical system consists of the battery, alternator, and wiring. The battery is the primary source of power, while the alternator recharges the battery and provides.

Meta Description: Wondering how big an inverter you need for your family car?

Learn how to calculate wattage requirements, avoid common pitfalls, and pick the perfect inverter for road trips and daily use. Meta Description: Wondering how big an inverter you need for your family car?

Learn how to.

Selecting the right inverter is crucial to ensure compatibility, efficiency, and safety. Below are key considerations to guide your purchase. 1. What is a Vehicle Power Inverter?

A vehicle power inverter is an electronic device that transforms the DC power from your vehicle's battery into AC power.

A car inverter is a convenient car power converter that can convert 12V DC power into 220V AC power, which is the same as the main power, for general electrical appliances. Car inverters bring many conveniences to daily life and are widely used, so choosing the right inverter size is very.

If you’re gearing up for a road trip or want to use devices on the road, a power



inverter for your car or truck can help you transform battery voltage into energy for your tools. But it all depends on your vehicle and the devices you're planning to power. Before getting into the details, it's.

Typically, a 12-volt car battery can support an inverter with a power range of about 150 watts to 1500 watts. Please note, however, that car batteries are not suitable for driving high power inverters for extended periods of time, which may cause damage to the battery. When using a high power.



How big of an inverter can a family car be equipped with



How Big of an Inverter Can My Car Handle: Explained with Expert ...

Experts recommend that you select an inverter that's no more than 80% of your car's electrical system capacity.

Inverter for Car: Everything You Need to Know Before You Plug In

That said, if you drive a larger vehicle like a truck or SUV, and you only plan to use the inverter while the engine is running, a 2000 watt car inverter can be a solid option.



[How Big of an Inverter Can My Car Battery Handle?](#)

This guide is designed to help you make an informed choice about how much power you can use from your car's battery to power an inverter, taking into account a number ...

[Comprehensive Guide to Vehicle Power Inverters](#)

Explore key considerations for selecting vehicle power inverters, including power capacity, waveform types, installation tips, and safety



precautions, to make informed ...



How to choose a power inverter

When you're choosing a power inverter, it's important to choose the right size. The size you need depends on how you intend to use the inverter. The most important step is to ...

What Size of Car Inverter do I Need? , inverter

The size of the car inverter will vary in different applications. This mainly depends on the power requirements of the equipment, the ...



How to choose a power inverter

When you're choosing a power inverter, it's important to choose the right size. The size you need depends on how you intend to ...





How Big of an Inverter Can My Car Handle

The size of the inverter that a car can handle is determined by the amount of power that the car's battery can provide. The typical 12 volt ...

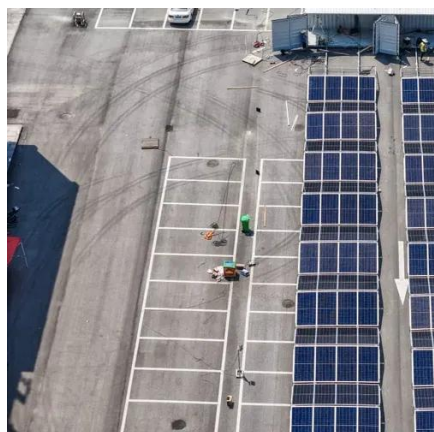


What Size of Car Inverter do I Need? , inverter

The size of the car inverter will vary in different applications. This mainly depends on the power requirements of the equipment, the space inside the vehicle, and the ...

Choosing the Right Power Inverter for your Car or ...

Generally, you should not use an inverter larger than 400 watts with a car or truck starter battery. So, if your only power ...



How Big Of an Inverter Can My Car Handle

To determine the largest inverter your car can handle, you will first need to assess your current car's voltage and current demands. Today, most ...



Choosing the Right Power Inverter for your Car or Truck

Generally, you should not use an inverter larger than 400 watts with a car or truck starter battery. So, if your only power source is your car's starter battery, you won't be able to operate power ...



How Big of an Inverter Can My Car Battery Handle?

This guide is designed to help you make an informed choice about how much power you can use from your car's battery to power an ...



How Big of an Inverter Can My Car Handle

The size of the inverter that a car can handle is determined by the amount of power that the car's battery can provide. The typical 12 volt car battery can provide around 1000 ...



How Big Of an Inverter Can My Car Handle . Expert Guide

To determine the largest inverter your car can handle, you will first need to assess your current car's voltage and current demands. Today, most vehicles can operate a 110v inverter, ...





How to Choose the Right Size Inverter for Your Family Car: A ...

Meta Description: Wondering how big an inverter you need for your family car? Learn how to calculate wattage requirements, avoid common pitfalls, and pick the perfect inverter for road ...



- LiFePO₄ Battery, safety
- Wide temperature: -20~55°C
- Modular design, easy to expand
- The heating function is optional
- Intelligent BMS
- Cycle Life: > 6000
- Warranty: 10 years



[How Big of an Inverter Can My Car Handle: ...](#)

Experts recommend that you select an inverter that's no more than 80% of your car's electrical system capacity.



Contact Us

For inquiries, pricing, or partnerships:

<https://sccd-sk.eu>

Phone: +32 2 808 71 94

Email: info@sccd-sk.eu

Scan QR code for WhatsApp.

