



How long does it take for a 200W solar panel to charge a 100Ah battery





Overview

With a 200W solar panel, under ideal sunlight conditions, it can produce approximately 200 watt-hours daily. Therefore, to fully charge a 100Ah battery from a completely drained state, it would take about six days of optimal solar exposure. This estimate assumes there are no.

With a 200W solar panel, under ideal sunlight conditions, it can produce approximately 200 watt-hours daily. Therefore, to fully charge a 100Ah battery from a completely drained state, it would take about six days of optimal solar exposure. This estimate assumes there are no.

A 200-watt solar panel can charge a 100Ah battery in about 5 hours with good sunlight. If you have 7.5 hours of sunlight, it can efficiently charge three 100Ah batteries, two 150Ah batteries, or one 300Ah battery. This shows the panels' efficiency and charging capability in different scenarios.

With a 200W solar panel at 85% efficiency, the panel delivers 170W. Divide 600Wh by 170W and you'll get about 3.5 hours of full sunlight. Enter your battery capacity. You can use Ah or Wh. If you use Ah, also enter the battery voltage. Add your panel wattage. Enter system efficiency (if you're.

Our Solar Panel Charging Time Calculator helps you calculate the estimated hours and days required to fully charge your battery based on panel wattage, battery capacity (Ah), voltage, and charge controller efficiency. Whether you are powering a cabin, RV, or backup solar system, understanding.

Several factors influence how long it takes a solar battery to be charged. Below are details on some of the most impactful. Panel wattage: The wattage of a solar panel determines how quickly it can supply energy. If the panel's wattage is high, it can send energy to the battery more quickly, and.

There are a few factors that determine how long it would take to charge a 100Ah battery with a 200W solar panel. In this article, I thoroughly explain these factors, and I provide a few steps that you can take to get as much of an accurate estimate as possible. These steps are: Determining the.

When people ask how long does a 200W solar panel take to charge a battery, they



usually refer to 12V , 100 ah batteries, so that is what is covered in this guide. However you can use the formulas here for other battery and solar panel sizes as well. A 200W solar panel can charge a battery in 5.



How long does it take for a 200W solar panel to charge a 100Ah battery



[Solar Battery Charge Time Calculator](#)

Formula: Charge Time (hours) = Battery Capacity (Ah) / (Solar Panel Wattage * Solar Insolation * Panel Efficiency) For example, consider a battery of 100Ah capacity, a solar ...

How Long Does It Take For A 200W Solar Panel To Charge A ...

So, how long does it take for a 200W solar panel to charge a battery? In real life, it ranges from a few hours to a couple of days, depending on battery size, sunlight, and system ...



[How Long Will a 200W Solar Panel Take to Charge a Battery?](#)

So when we say it takes 6 hours for a 200W solar panel to charge a 100ah battery, we assume it is the summer or a clear day. The charge time will take longer during the cold season.

[Solar Panel Charging Time Calculator . SolarMathLab](#)

Formula: Charging Time (h) ? (Battery Ah × V × (Target SOC / 100)) ÷ (Panel W × (Eff% / 100)).
Adjust for sunlight hours to find daily charging



duration. Accurately estimating how long a solar ...



[How Long Will a 200W Solar Panel Take to ...](#)

So when we say it takes 6 hours for a 200W solar panel to charge a 100ah battery, we assume it is the summer or a clear day. The charge time will ...



How Long Does It Take For A 200W Solar Panel To Charge A Battery...

So, how long does it take for a 200W solar panel to charge a battery? In real life, it ranges from a few hours to a couple of days, depending on battery size, sunlight, and system ...



Solar Panel Charge Time Calculator: Accurately Estimate How Long ...

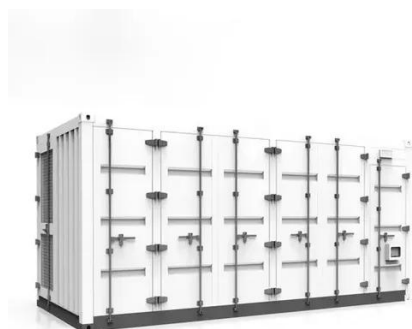
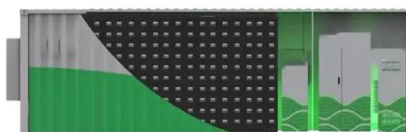
Estimating how much time it will take to fully charge a battery using solar panels is not always simple. There are many different variables that will affect the ultimate result, such ...





Charging Time: How Long to Charge a 100Ah Battery with a 200W Solar Panel?

A 200-watt solar panel can charge a 100Ah battery in about 5 hours with good sunlight. If you have 7.5 hours of sunlight, it can efficiently charge three 100Ah batteries, two ...



[How long to charge 100ah battery with 200w solar ...](#)

Assuming you're using an MPPT solar charge controller, a 12V-200W solar panel would take 10 to 20 daytime hours to charge a ...

Solar Panel Charge Time Calculator: Accurately Estimate How ...

Estimating how much time it will take to fully charge a battery using solar panels is not always simple. There are many different variables that will affect the ultimate result, such ...



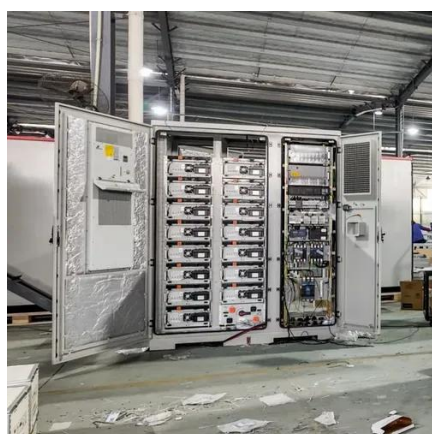
[How long to charge 100ah battery with 200w solar panel?](#)

Assuming you're using an MPPT solar charge controller, a 12V-200W solar panel would take 10 to 20 daytime hours to charge a completely depleted 12V-100Ah battery.



How to Calculate Charging Time of Battery by Solar Panel

Panel wattage, sunlight hours, and battery size directly affect charge time. MPPT charge controllers boost efficiency, especially in low light. Clean panels, proper tilt, and correct ...

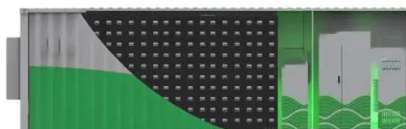


Solar Battery Charge Time Calculator

Formula: Charge Time (hours) = Battery Capacity (Ah) / (Solar Panel Wattage * Solar Insolation * Panel Efficiency) For example, ...

Charging Time: How Long to Charge a 100Ah Battery with a ...

A 200-watt solar panel can charge a 100Ah battery in about 5 hours with good sunlight. If you have 7.5 hours of sunlight, it can efficiently charge three 100Ah batteries, two ...



How Long To Charge A 100Ah Battery With a 200W Solar Panel?

Although a straightforward calculation might suggest 5-6 hours, a 200W panel can fully charge a 12V 100Ah battery from a 50% discharge in approximately 1-2 full days. This ...



[How to Calculate Charging Time of Battery by ...](#)

Panel wattage, sunlight hours, and battery size directly affect charge time. MPPT charge controllers boost efficiency, especially in low ...



[Solar Panel Charging Time Calculator](#)

Easily find out how long your solar panels take to charge any battery. Use our free solar panel charging time calculator for fast and accurate results.



Contact Us

For inquiries, pricing, or partnerships:

<https://sccd-sk.eu>

Phone: +32 2 808 71 94

Email: info@sccd-sk.eu

Scan QR code for WhatsApp.

