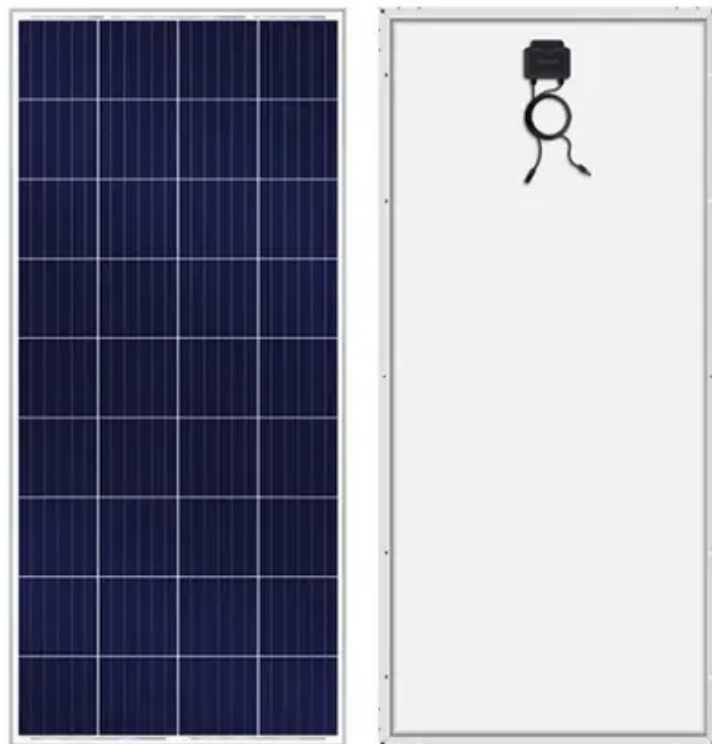




How long does it take to balance a new energy battery cabinet





Overview

Once cells are balanced, disconnect the parallel setup and reconnect the cells in series according to the desired battery pack voltage. Install the Battery Management System (BMS), which will monitor and actively balance the cells during use, ensuring ongoing voltage.

Once cells are balanced, disconnect the parallel setup and reconnect the cells in series according to the desired battery pack voltage. Install the Battery Management System (BMS), which will monitor and actively balance the cells during use, ensuring ongoing voltage.

In addition, getting the battery pack back into balance can take days or weeks of balancing downtime, during which the pack is out of commission. Also, battery packs that are regularly cycled while out of balance will degrade faster than packs that are kept balanced. A simple example is a small.

Battery balancers ensure stable voltage across all cells in a lithium battery pack, improving performance, lifespan, and safety. In applications from EVs and solar storage to industrial ESS and robotics, even small voltage differences can reduce capacity, accelerate aging, and create safety risks.

Battery balancing might sound technical, but it's a crucial process to ensure your batteries operate safely and last as long as possible. Whether you're working with solar systems, RV setups, electric vehicles, or DIY projects with more than one battery's system, understanding how to balance.

Working space shall be measured from the edge of the battery cabinet, racks, or trays, (NEC 480.9, 110.26) Spaces about the ESS shall comply with NEC 110.26. Working space shall be measured from the edge of the ESS modules, battery cabinets, racks, or trays, (NEC 706.10(C)) For battery racks, there.

Once cells are balanced, disconnect the parallel setup and reconnect the cells in series according to the desired battery pack voltage. Install the Battery Management System (BMS), which will monitor and actively balance the cells during use, ensuring ongoing voltage uniformity. What Role Does the.

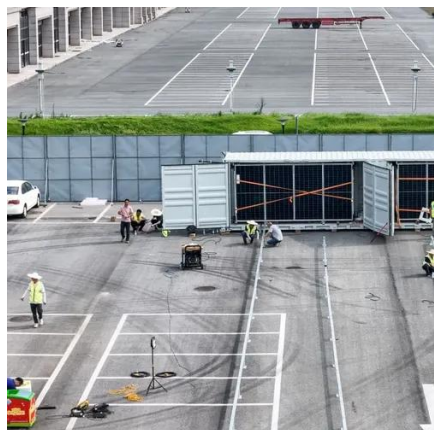
ry management systems (BMS) for lithium-ion batteries. Effective cell balancing is



crucial for maximizing the usable capacity and lifespan of battery packs, which is essential for the widespread adoption of electric vehicles and the reduction of grid into balance and actively works to keep it.



How long does it take to balance a new energy battery cabinet



What Is A Battery Cell Imbalance On a PWRcell Battery Cabinet?

Battery cell imbalance usually occurs when new modules are installed in an existing cabinet that was not already installed with 6 battery cells. The only way at this time to get it resolved is to ...

[How to balance the energy storage lithium battery pack](#)

In addition to ensuring that the lithium battery pack is not overcharged or over-discharged, the battery management system BMS can also maintain the balancing of the battery pack through ...



[How to balance voltage and current in battery cabinet](#)

How to balance a battery pack correctly? needs two key things to balance a battery pack correctly: balancing circuitry and balancing algorithms. While a few methods exist to ...



Energy Storage Battery Configuration: A Practical Guide for ...

This is where energy storage battery configuration becomes the ultimate power snack drawer,



keeping the lights on when renewable energy gets moody. Let's explore how to ...



Techniques for Balancing Batteries- Improve Battery Life & Safety

In this article, we'll walk you through what battery balancing is, why it's important, common signs your batteries need balancing, and step-by-step methods to do it properly.

[Battery Energy Storage System Electrical Checklist](#)

ESS modules, battery cabinets, racks, or trays shall be permitted to contact adjacent walls or structures, provided that the battery shelf has a free air space for not less than 90% of its length.



[Battery Balancer Guide: Boost Battery ...](#)

Discover how battery balancers improve lithium battery performance, lifespan, and safety. Learn types, functions, and tips to ...





Battery Cell Imbalance: What it Means (+How to Balance ...)

How long does it take to balance cells? Many battery packs come with underpowered balancing algorithms, causing them to require days or weeks of downtime for ...



How To Balance A Lithium Batteries: Top and Bottom Balancing

A balanced battery pack is critical to getting the most capacity out of your pack, read along to learn how to top and bottom balance a lithium battery pack.

Techniques for Balancing Batteries-Improve ...

In this article, we'll walk you through what battery balancing is, why it's important, common signs your batteries need balancing, and step-by-step ...



Battery Balancer Guide: Boost Battery Performance & Lifespan

Discover how battery balancers improve lithium battery performance, lifespan, and safety. Learn types, functions, and tips to choose the right balancer.





How to Balance Your Lithium Battery Pack During Installation

When Should You Balance Your Lithium Battery Pack? Battery balancing should be performed during the initial setup or after significant imbalances due to use or aging.



[How To Balance A Lithium Batteries: Top and ...](#)

A balanced battery pack is critical to getting the most capacity out of your pack, read along to learn how to top and bottom balance a ...



Contact Us

For inquiries, pricing, or partnerships:

<https://sccd-sk.eu>

Phone: +32 2 808 71 94

Email: info@sccd-sk.eu

Scan QR code for WhatsApp.

