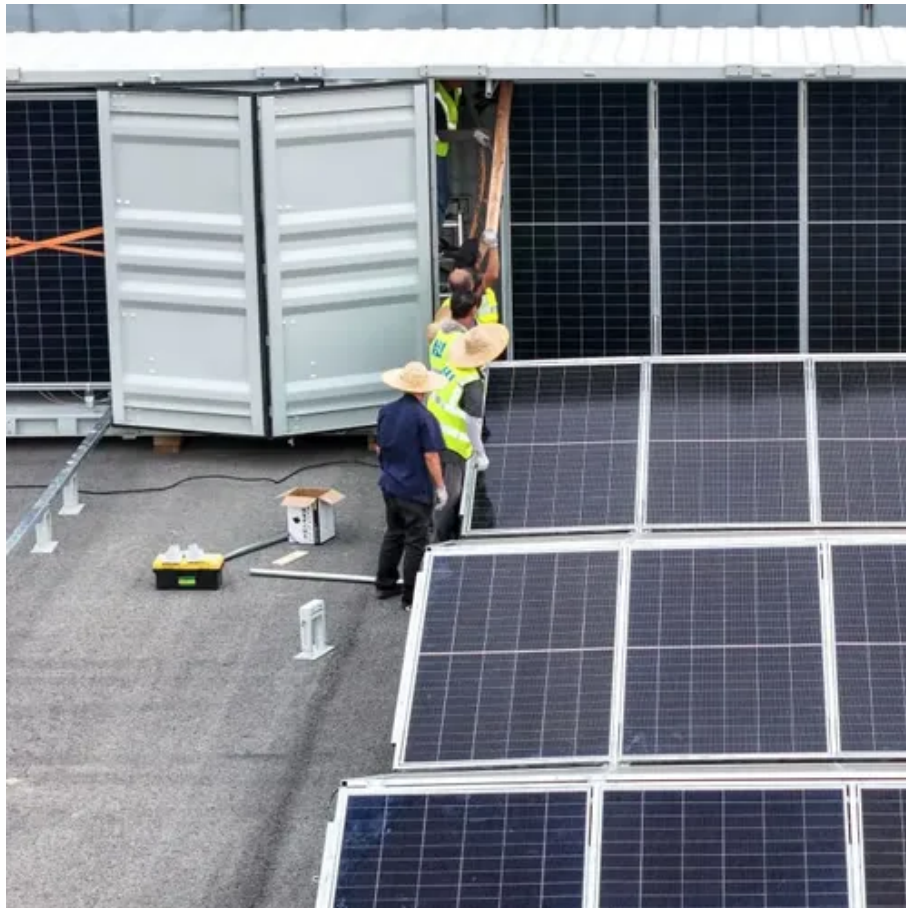




How long does it take to install base station communication equipment





Overview

How much does a complete base station CB setup cost?

Basic setups start around \$300-500, including radio, antenna, coax, and power supply. Mid-range systems run \$500-1000, while premium installations can exceed \$2000. Your specific needs and quality preferences determine the final.

How much does a complete base station CB setup cost?

Basic setups start around \$300-500, including radio, antenna, coax, and power supply. Mid-range systems run \$500-1000, while premium installations can exceed \$2000. Your specific needs and quality preferences determine the final.

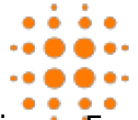
Installing a Base Transceiver Station (BTS) is a critical step in building mobile communication networks. Here's a step-by-step guide to the process: 1. Site Acquisition and Survey Objective: Select and acquire a suitable location for the BTS. Activities: Identify coverage gaps or expansion areas.

This acts as the "blood supply" of the base station, ensuring uninterrupted power. It includes: AC distribution box: Distributes mains power and offers surge protection. Switch-mode power supply: Converts and stabilizes power while managing DC output. Battery banks: Serve as backup power to keep.

These rules explain how to install, test, operate and maintain ARC systems so they are compliant with the FDNY. The rules also require testing ARC systems to make sure they work well for firefighters. After installing the ARC system, a test is needed to check if it works. The FDNY must accept the.

According to rightchannelradios.com, a well-designed base station can achieve communication ranges of 15-25 miles regularly, with skilled operators reaching even further during optimal conditions. This dramatic improvement over mobile installations comes from higher antenna placement, better.

The present-day tele-space is incomplete without the base stations as these constitute an important part of the modern-day scheme of wireless communications. They are referred to as cell towers or cellular antennas. These types of objects are an inevitability since they serve the purpose of.



Before you set up a base station, please see Base station operation guidelines. For construction applications, where machine and site positioning operations using GNSS will be carried out over a long time (weeks, months, or years), ensure that you carefully choose the base station location. A.



How long does it take to install base station communication equipment



Base Stations

The present-day tele-space is incomplete without the base stations as these constitute an important part of the modern-day scheme of wireless communications. They are ...

[Gateway and Base Station Installation Guide](#)

Installing a Gateway or Base Station y or Base Station requires the same steps. The only difference is for a gateway using the antenna mounted to the enclosure



[Common ways to set up a base station](#)

Before you set up a base station, please see Base station operation guidelines. For construction applications, where machine and site ...



ARCS Commissioning Test Report

After installing the ARC system, a test is needed to check if it works. The FDNY must accept the test report before they inspect the system. Also, a recertification test is needed every five ...



Base Stations

The present-day tele-space is incomplete without the base stations as these constitute an important part of the modern-day scheme ...



[Base Station Installation & Maintenance Test Solutions](#)

To ensure stable communication between a base station and connect with the stability of mobile devices, it is necessary to check radio communication performance and eliminate radio wave ...



[Complete Guide to 5G Base Station Construction](#)

Explore how 5G base stations are built--from site planning and cabinet installation to power systems and cooling solutions. Learn the ...





Process of Installing a Base Transceiver Station ...

Installing a Base Transceiver Station (BTS) is a critical step in building mobile communication networks. Here's a step-by-step guide to ...



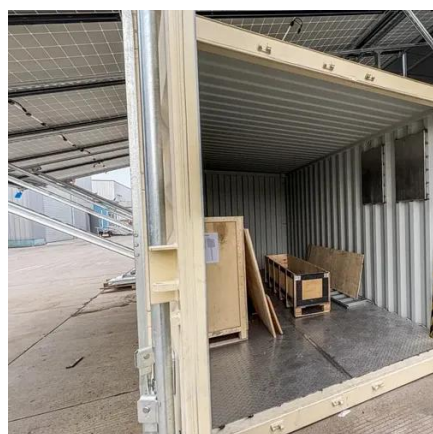
Common ways to set up a base station

Before you set up a base station, please see Base station operation guidelines. For construction applications, where machine and site positioning operations using GNSS will be carried out ...



How to Set Up a Base Station CB System: A ...

This guide will walk you through the basic understanding of Base Station CB System, how to install them and how to do that right



5g network installation

The deployment of a 5G network involves several technical steps, including infrastructure development, spectrum allocation, and equipment installation. Here is a detailed ...



[Back to the "Basics" with Base Station Installation](#)

Using a base station from a fixed location, you can communicate with a fleet of portable radios. Asking yourself the following questions might help you figure out if this is the solution for you:



[Back to the "Basics" with Base Station Installation](#)

Using a base station from a fixed location, you can communicate with a fleet of portable radios. Asking yourself the following questions might help you ...

[Process of Installing a Base Transceiver Station \(BTS\)](#)

Installing a Base Transceiver Station (BTS) is a critical step in building mobile communication networks. Here's a step-by-step guide to the process:



[How to Set Up a Base Station CB System: A Complete ...](#)

This guide will walk you through the basic understanding of Base Station CB System, how to install them and how to do that right



Complete Guide to 5G Base Station Construction , Key Steps, Equipment

Explore how 5G base stations are built--from site planning and cabinet installation to power systems and cooling solutions. Learn the essential components, technologies, and ...





Contact Us

For inquiries, pricing, or partnerships:

<https://sccd-sk.eu>

Phone: +32 2 808 71 94

Email: info@sccd-sk.eu

Scan QR code for WhatsApp.

