



How many base station sites are there on a street





Overview

There are several different kinds of mobile , every one of which has different usage characteristics. RDUs are mobile radio base stations transportable on trucks. Their use is strategic for the rapid expansion of cellular networks. • A rapid deployment flanged pole is a mobile radio base station infrastructure.

Based on the chart above, there are 7 million physical sites and 10 million logical sites. As there are many sites hosting infrastructure from multiple operators, the number of logical sites are more than the number of physical sites.

Based on the chart above, there are 7 million physical sites and 10 million logical sites. As there are many sites hosting infrastructure from multiple operators, the number of logical sites are more than the number of physical sites.

The Wireless Infrastructure Association (WIA) recently published perhaps the most definitive look at the wireless infrastructure landscape in the US, showing 142,100 cell towers and 452,200 outdoor small cell nodes across the country at the end of last year. Because WIA's report segments.

At the end of 2022, there were 142,100 cell towers and 452,200 outdoor small cell nodes across the US, according to one new tally. The Wireless Infrastructure Association (WIA) recently published perhaps the most definitive look at the wireless infrastructure landscape in the US, showing 142,100.

Based on the chart above, there are 7 million physical sites and 10 million logical sites. As there are many sites hosting infrastructure from multiple operators, the number of logical sites are more than the number of physical sites. Again, most of the sites have distributed RAN (D-RAN) so there.

in the US.

Mobile cell sites are infrastructure transportable on trucks, allowing fast and easy installation in restricted spaces. Their use is strategic for the rapid expansion of cellular networks putting into service point-to-point radio connections as well as supporting sudden increases in mobile traffic.

These base stations provide the cell with the network coverage which can be used for transmission of voice, data, and other types of content. In radio communications, a transceiver is a two-way radio that combines both a radio



transmitter and a receiver that exchanges information in half-duplex. Can a base station serve a radio?

Again, most of the sites have distributed RAN (D-RAN) so there may be one or more base stations (baseband unit or BBU) and each base station can serve one or more radios. See links at the bottom for tutorials on these topics.

What is a mobile radio base station?

These mobile radio base stations guarantee full operation in just one day and in restricted spaces. COWs provide fully functional service, via vehicles such as trailers, vans and trucks, to areas affected by natural disaster or areas with large user volume, such as major events.

What is a mobile cell station?

The mobile units have been designed to be a temporary solution, but if requested, they can be transformed into permanent stations. There are several different kinds of mobile cell sites, every one of which has different usage characteristics. RDUs are mobile radio base stations transportable on trucks.

How many physical and logical sites are there?

Here is a slightly updated number, though I am not confident on its accuracy. Gabriel Brown, analyst at Heavy Reading shares this chart above in the annual online Open RAN Digital Symposium. Based on the chart above, there are 7 million physical sites and 10 million logical sites.



How many base station sites are there on a street



[U.S. cell towers and small cells: By the numbers](#)

The firm counted 209,500 macrocell sites in the US at the end of 2022 and defined macrocells as sites covering large geographic ...

Tower Maps

Tower Maps is the most comprehensive, most accurate and most current database of cell towers and wireless antenna sites in the US.



Cellular Tower and Signal Map

Setting a DAS to any other type will restore the main tower and delete the individual DAS elements. CellMapper is a crowd-sourced cellular tower and coverage mapping service.



Nearly Half A Million Cell Sites Are Cropping Up In The U.S.

According to the Cellular Telecommunications and Internet Association (CTIA), there are over 418,000 cell sites across the US. The industry's regulatory



issues were highlighted in CTIA's ...



US cell towers and small cells: By the numbers

At the end of 2022, there were 142,100 cell towers and 452,200 outdoor small cell nodes across the US, according to one new tally.



Cellular Networks, Cells, and Base Stations -- EITC

The network is distributed over land areas called cells, each served by at least one fixed-location transceiver (short for transmitter-receiver - a device that both transmits and ...



How many Cell Sites and Base Stations Worldwide?

Based on the chart above, there are 7 million physical sites and 10 million logical sites. As there are many sites hosting infrastructure ...





Nearly Half A Million Cell Sites Are Cropping Up In ...

According to the Cellular Telecommunications and Internet Association (CTIA), there are over 418,000 cell sites across the US. The industry's ...



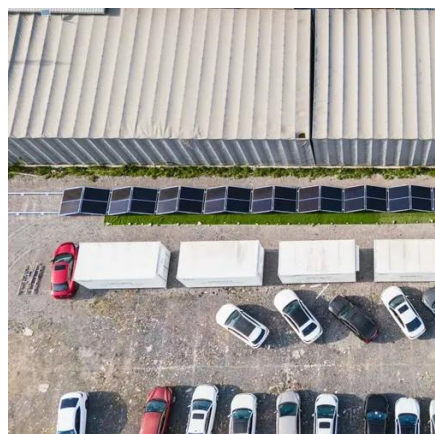
United States Cell Tower Map

United States Cell Tower Map The United States Cell Tower Map features over 25000 locations with corresponding tower and radio information. This map is useful in planning and ...



US cell towers and small cells: By the numbers

At the end of 2022, there were 142,100 cell towers and ...



U.S. cell towers and small cells: By the numbers

The firm counted 209,500 macrocell sites in the US at the end of 2022 and defined macrocells as sites covering large geographic regions that are typically mounted on cell ...



Number of Cell Towers and Small Cells in the United States in 2023

The concern I have is that people in the industry or outside the industry that don't understand the nuance of node vs small cell will assume that there are 452,200 separate ...



How many Cell Sites and Base Stations Worldwide?

Based on the chart above, there are 7 million physical sites and 10 million logical sites. As there are many sites hosting infrastructure from multiple operators, the number of ...

Mobile cell sites

There are several different kinds of mobile cell sites, every one of which has different usage characteristics. RDUs are mobile radio base stations transportable on trucks. Their use is strategic for the rapid expansion of cellular networks. o A rapid deployment flanged pole is a mobile radio base station infrastructure ...



United States Cell Tower Map

United States Cell Tower Map The United States Cell Tower Map features over 25000 locations with corresponding tower and radio information. ...



Mobile cell sites

There are several different kinds of mobile cell sites, every one of which has different usage characteristics. RDUs are mobile radio base stations transportable on trucks. Their use is ...



Number of Cell Towers and Small Cells in the ...

The concern I have is that people in the industry or outside the industry that don't understand the nuance of node vs small cell will ...



Contact Us

For inquiries, pricing, or partnerships:

<https://sccd-sk.eu>

Phone: +32 2 808 71 94

Email: info@sccd-sk.eu

Scan QR code for WhatsApp.

