



How many batteries does a 2000w inverter use





How many batteries does a 2000w inverter use



How Many Batteries Do You Need For a 2000W Inverter?

A 2000W inverter requires a 200ah battery to run at full load for 20-25 minutes and 600ah to run for an hour. If you want to recharge the battery at 50%, the battery sizes have to be doubled to ...

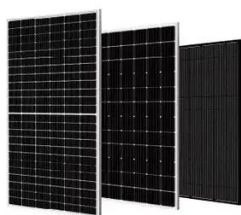
How Many Batteries for a 2000 watt Inverter?

Do you need to know how many batteries you need for a 2,000W inverter? Read this article for calculations and diagrams of ...



How many batteries do I need to run a 2000 watt inverter

Q: How many batteries do I need to run a 2000 watt inverter? A: The number of batteries required to run a 2000 watt inverter depends on various factors, including the voltage ...

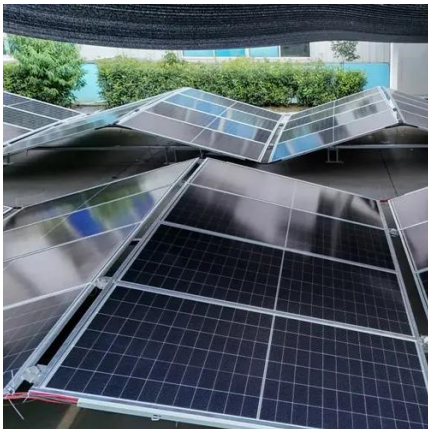


How Many Batteries Do You Need to Run a 2000-Watt Inverter?

How Many Batteries Do You Need to Run a 2000-Watt Inverter? To run a 2000-watt inverter, you typically need 2-4 deep-cycle batteries (12V,



200Ah each) depending on runtime requirements
...



[How Many Batteries Do You Need for a 2000 Watt Inverter?](#)

How many batteries do you need for your 2000-watt inverter? Learn about voltage compatibility, runtime, and cost comparisons of batteries.

[How Many Batteries Do You Need for a 2000 Watt ...](#)

How many batteries do you need for your 2000-watt inverter? Learn about voltage compatibility, runtime, and cost comparisons of ...



How Many Batteries To Power 2000w Inverter? , Inverter And Battery

This video answers the question "How many batteries for a 2000W inverter?" We'll cover everything you need to know to power your 2000W inverter effectively.



2000 Watt Power Inverter: Applications, Battery Requirements, ...

2000W inverter demands a battery (or batteries) with enough juice to handle both continuous and surge loads. A typical 12V inverter with 2000 watt power inverter requires ...



[How Many Batteries Do I Need For A 2000 Watt ...](#)

Running a 2000 watt inverter requires the proper battery and equipment to ensure efficiency and safety. The size of the battery needed depends on ...

How Many Batteries Do I Need for a 1000W or 2000W Power Inverter?

If you're setting up an off-grid RV, backup power system, or solar setup, one question dominates: How many batteries do I need for a 1000W or 2000W power inverter? ...



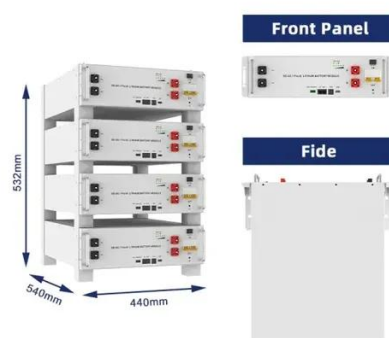
[How many batteries to run a 2000W inverter?](#)

To run a 2000W inverter, the number of batteries required depends primarily on their voltage, capacity (Ah), and your desired runtime. For a common 12V deep cycle battery ...



How Many Batteries Do I Need For A 2000 Watt Inverter?

Running a 2000 watt inverter requires the proper battery and equipment to ensure efficiency and safety. The size of the battery needed depends on the voltage and amperage of the inverter, ...



How Many Batteries for a 2000 watt Inverter? + Diagrams

Do you need to know how many batteries you need for a 2,000W inverter? Read this article for calculations and diagrams of different battery configurations.

How Many Batteries To Power 2000w Inverter?

This video answers the question "How many batteries for a 2000W inverter?" We'll cover everything you need to know to power your ...



How many batteries do I need to run a 2000 watt ...

Q: How many batteries do I need to run a 2000 watt inverter? A: The number of batteries required to run a 2000 watt inverter depends ...



How Many Batteries Do I Need for a 1000W or ...

If you're setting up an off-grid RV, backup power system, or solar setup, one question dominates: How many batteries do I need for a ...





Contact Us

For inquiries, pricing, or partnerships:

<https://sccd-sk.eu>

Phone: +32 2 808 71 94

Email: info@sccd-sk.eu

Scan QR code for WhatsApp.

