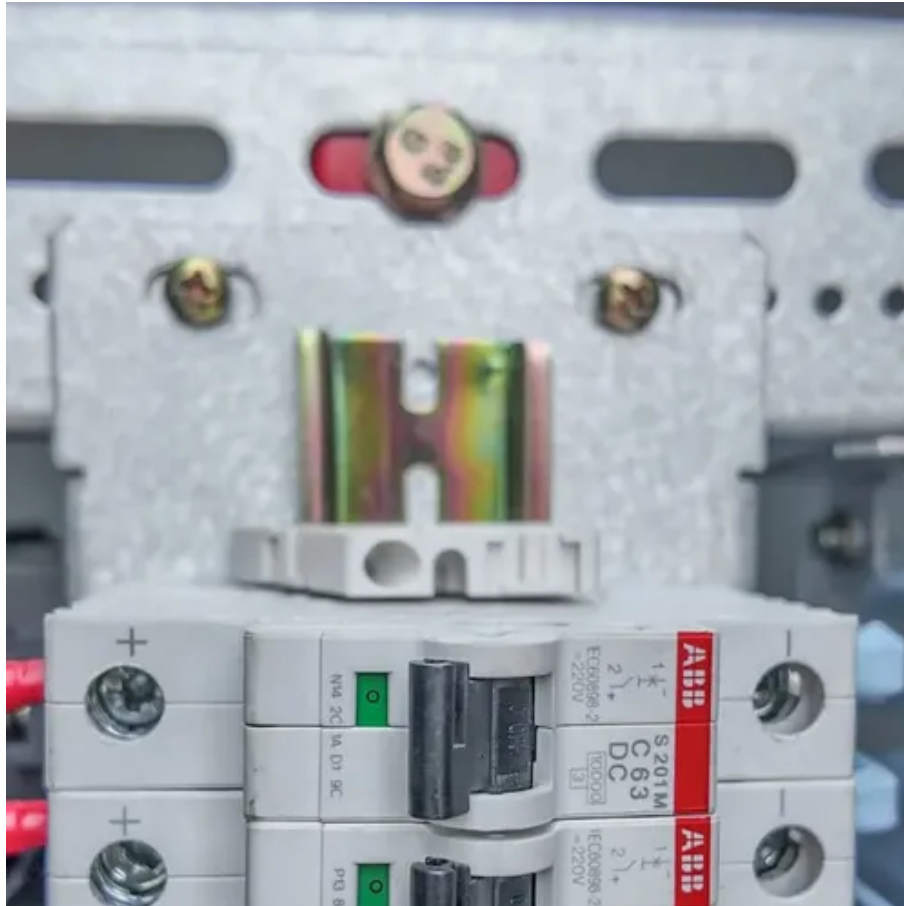




# How many hours can a 24v inverter 2000w be used for





## Overview

---

This means the system could power a full 2000W load for about 2.16 hours before the battery depletes. Choosing the right battery size ensures optimal performance. Below is a comparison of different battery capacities and expected runtimes:.

This means the system could power a full 2000W load for about 2.16 hours before the battery depletes. Choosing the right battery size ensures optimal performance. Below is a comparison of different battery capacities and expected runtimes:.

A 2000 watt inverter is a versatile power solution, commonly used for RVs, off-grid solar systems, and emergency backup power. However, understanding how long it can run depends on multiple factors, including battery capacity, power consumption, and efficiency losses. This article breaks down the.

An inverter converts stored DC energy from batteries into usable AC power for appliances. The duration it can supply power depends on three key factors: Battery Capacity (Ah): The amount of energy stored in the battery. Inverter Efficiency (%): How effectively the inverter converts DC to AC power.

A 2000 watt inverter can run for approximately 36 minutes on a fully charged 12-volt, 100 Ah battery. This estimate accounts for the battery's capacity and the inverter's efficiency. For best performance, make sure the battery's capacity matches or exceeds these specifications. Run Time (hours) =.

A 2000-watt power inverter is an electronic device that converts DC ( direct current ) electricity stored in batteries into standard AC (alternating current) power, which can be used to run all kinds of appliances or electronics. These inverters are common in RVs, small homes, and for backup power.

This calculator helps to estimate how long an inverter can run a particular load with a given battery capacity and efficiency. The following formula is used to calculate the usage time of an inverter: Variables: To calculate the usage time of an inverter, multiply the battery capacity by 12 (to.

First of all, 2000w inverter indicates that it can bring up to 2000w of total power appliances, of course, due to the different properties of the appliances, the appliances that can actually be driven should be less than 2000w, and secondly,



the battery capacity represents the maximum energy that.



## How many hours can a 24v inverter 2000w be used for

---



### 2000 Watt Power Inverter: Applications, Battery Requirements, ...

Discover how a 2000 watt power inverter powers appliances, tools, and RV gear. Learn battery setup, usage tips, and why it's ideal for off-grid living.

### How Long Will A Battery Run A 2000 Watt Inverter? Key Factors ...

If you run a 2000 watt inverter, you can calculate the duration of the battery life by dividing the total energy by the inverter's power requirement. For example, 1200 Wh divided ...



### [What Can a 2000W Inverter Run? Fridges, TVs,](#)

A 2000W inverter can run devices anywhere from a few minutes to several hours, depending on the battery capacity, load, and ...

### [How to Calculate Battery Capacity for a 2000W Inverter Use](#)

Calculating battery capacity for a 2000W inverter is essential for ensuring that your power needs are met effectively. This article will guide you through



the necessary calculations, ...



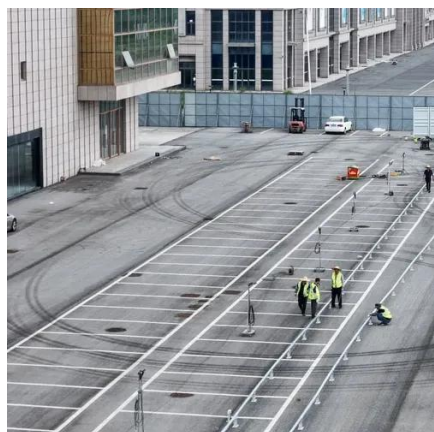
### [How Many Amps Does a 2000W Inverter Draw?](#)

Learn how many amps a 2000W inverter uses. We explain the calculations step by step for checking inverter capacity and lifespan.



### [What Can a 2000W Inverter Run? Fridges, TVs, & More!](#)

A 2000W inverter can run devices anywhere from a few minutes to several hours, depending on the battery capacity, load, and efficiency. While the inverter itself is rated for ...



### **Inverter Usage Calculator**

Enter the battery capacity, inverter efficiency, and load power into the calculator to determine the usage time of an inverter. This ...





## Inverter Usage Calculator

Enter the battery capacity, inverter efficiency, and load power into the calculator to determine the usage time of an inverter. This calculator helps to estimate how long an inverter ...



## Inverter Usage Time Calculator

Understanding how long your inverter will last is essential for efficient energy management and backup power planning. This guide explores the science behind inverter ...



## How Long Will a 2000w Inverter Run?

Theoretically, this configuration can run at full power for about 2.4 h. The more batteries, the better, within the economic limits.



## How Long Will a 2000 Watt Inverter Run? Battery Sizing and ...

A 2000 watt inverter is a versatile power solution, commonly used for RVs, off-grid solar systems, and emergency backup power. However, understanding how long it can run ...





## [How Long Will a 2000 Watt Power Inverter Run?](#)

Wondering how long a 2000-watt power inverter run will last? This guide explains how to calculate runtime, understand your energy needs.





## Contact Us

---

For inquiries, pricing, or partnerships:

<https://sccd-sk.eu>

Phone: +32 2 808 71 94

Email: [info@sccd-sk.eu](mailto:info@sccd-sk.eu)

Scan QR code for WhatsApp.

