



How many kilowatt-hours of electricity does 50 megawatts of solar energy generate





Overview

A solar power plant with a capacity of 1 megawatt (MW) can generate approximately 4,000 kilowatt-hours (kWh) daily, equating to about 1,20,000 kWh monthly and 14,40,000 kWh annually, sufficient to support large businesses.

A solar power plant with a capacity of 1 megawatt (MW) can generate approximately 4,000 kilowatt-hours (kWh) daily, equating to about 1,20,000 kWh monthly and 14,40,000 kWh annually, sufficient to support large businesses.

This page describes the calculations used to convert green power electricity (kilowatt-hours [kWh]) into various types of equivalencies. According to the U.S. Energy Information Administration (EIA), the average annual electricity consumption for an American household in 2023 was 10,260 kWh, an.

1 Megawatt= 1,000 kilowatts The conversion of MW (megawatt) to kW (kilowatt) is simple. One MW is equivalent to one thousand kW. Since the MW is a much bigger unit, using the conversion is important when it comes to smaller or more granular power measurements. It can be further explained via an.

The energy produced from 1 megawatt (MW) of solar power varies greatly depending on the location and amount of sunlight. A US national average can be calculated using capacity factor data from the solar panel industry. Household solar panel systems are typically up to 4kWp in size, producing.

This calculator allows you to convert megawatts (MW) to kilowatt-hours (kWh). It takes two primary parameters: Power (MW): Enter the amount of power in megawatts. Time (Hours): Enter the duration for which the power is used in hours. To use this calculator, enter the required values into the fields.

Number of kilowatts \div 1,000 = Number of megawatts Here's how to find how many megawatts are in 50,000 kilowatts: $50,000 \text{ kW} \div 1,000 = 50 \text{ MW}$ What Can One Megawatt Power?

A megawatt measures power on a large scale, so one megawatt can power a lot more than one household. The megawatt is the standard.

A megawatt (MW) measures the rate of energy transfer, equivalent to 1 million



watts. To visualize: 1 megawatt (MW): 1,000,000 watts (enough for 300-1,000 homes!) This unit answers the question: How fast is energy being used or produced?

A 1 MW solar farm, for instance, generates electricity at a.



How many kilowatt-hours of electricity does 50 megawatts of solar energy produce per day?



Frequently Asked Questions (FAQs)

How much electricity does a power plant generate? The amount of electricity that a power plant generates depends on its electricity generation capacity and on the amount of time the ...

Green Power Equivalency Calculator

Several different types of green power products are available. This page outlines some of the main distinction between product options.



What Is a Megawatt? Megawatt-Hours

As we just discussed, one megawatt is equal to one million watts or 1,000 kilowatts. Since all solar panel system sizes are described ...

[How Many kWh Does A Solar Panel Produce Per ...](#)

To illustrate how many kWh different solar panel sizes produce per day, we have calculated the kWh output for locations that get 4, 5, or 6 peak



SUN ...



How Many kWh Does A Solar Panel Produce Per Day?

To illustrate how many kWh different solar panel sizes produce per day, we have calculated the kWh output for locations that get 4, 5, or 6 peak sun hours. Here are all the results, gathered in ...

Megawatts to Kilowatt-hour (MW to kWh) Conversion

Our Megawatt to Kilowatt-hour calculator converts large power to energy consumption. Quick MW to kWh conversions for ...



TAX FREE

Product Model
HJ-ESS-215A(100KW/215KWh)
HJ-ESS-115A(50KW 115KWh)

Dimensions
1600*1280*2200mm
1600*1200*2000mm

Rated Battery Capacity
215KWH/115KWH

Battery Cooling Method
Air Cooled/Liquid Cooled

Frequently Asked Questions (FAQs)

How much electricity does a power plant generate? The amount of electricity that a power plant generates depends on its electricity generation capacity and on the amount of ...



MW to MWh Calculator

Similarly, a 10 MW solar farm operating for 5 hours will generate electricity in the amount of 50 MWh. This conversion, which defines how much energy is produced or used in a ...



How many MWh of solar energy comes from a MW of solar panels?

How much energy (megawatt hours / MWh) comes from 1 megawatt (MW) of solar power? The answer varies tremendously based on the geographic location and the amount of ...

[MW to kWh Calculator - Fast Energy Conversion](#)

This calculator multiplies the power value (in MW) by the time value (in hours) and then converts the result to kilowatt-hours by multiplying by 1000, as $1 \text{ MW} = 1000 \text{ kWh}$.



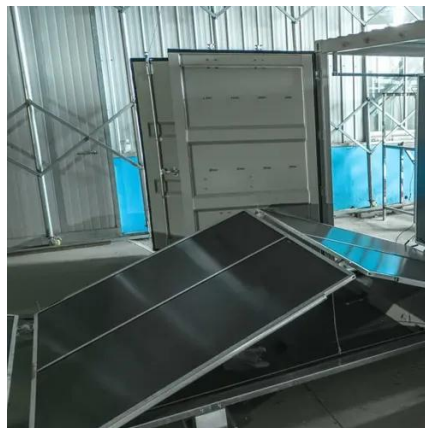
[What is a Megawatt? MW to kW Conversions, ...](#)

Learn what a megawatt (MW) means, how to convert MW to kW/W, and discover how 1 MW powers homes, industries, and solar ...



[Megawatts to Kilowatt-hour \(MW to kWh\) Conversion](#)

Our Megawatt to Kilowatt-hour calculator converts large power to energy consumption. Quick MW to kWh conversions for industrial usage analysis.



What is a Megawatt? MW to kW Conversions, Solar Energy & Home Power

Learn what a megawatt (MW) means, how to convert MW to kW/W, and discover how 1 MW powers homes, industries, and solar farms. Expert insights for energy storage ...

[What Is a Megawatt? Megawatt-Hours & Conversions Explained](#)

As we just discussed, one megawatt is equal to one million watts or 1,000 kilowatts. Since all solar panel system sizes are described in kilowatts, here is a quick table to ...



[How Many Megawatts Does A Solar Power Plant Produce](#)

A solar power plant of 1 MW can yield about 4,000 kilowatt-hours (kWh) daily--translating to roughly 120,000 kWh monthly and 1,440,000 kWh annually, sufficient for ...



Contact Us

For inquiries, pricing, or partnerships:

<https://sccd-sk.eu>

Phone: +32 2 808 71 94

Email: info@sccd-sk.eu

Scan QR code for WhatsApp.

