



How many solar container communication stations are there with wind and solar complementarity





Overview

At present, most hydro-wind-PV complementation in China is achieved by compensating wind power and PV power generation by regulating power sources, such as a unified dispatch of hydropower and pumped-storage power stations on the grid side.

At present, most hydro-wind-PV complementation in China is achieved by compensating wind power and PV power generation by regulating power sources, such as a unified dispatch of hydropower and pumped-storage power stations on the grid side.

Solar container communication wind power construction transition towards renewables is central to net-zero emissions. However, building a global power system dominated by solar and wind energy presents immense challenges. Here, we demonstrate the potential of a globally interconnected solar-wind.

At this ratio, the maximum wind-solar integration capacity reaches 3938.63 MW, with a curtailment rate of wind and solar power kept below 3 % and a loss of load probability maintained at 0 %. Furthermore, under varying loss of load probabilities, the total integration capacity of wind and solar.

How many communication base stations are there with. How many communication base stations are there with wind and solar complementarity Overview The complementarity between wind and solar resources is. This large-capacity, modular outdoor base station seamlessly integrates photovoltaic, wind.

The successful grid connection of a 54-MW/100-kWp wind-solar complementary power plant in Nanhai[™], Guangdong Province, in 2004 was the first wind-solar complementary power generation system officially launched for commercialization in China. Does China have a potential for hydro-wind-solar.

Hybrid energy solutions enable telecom base stations to run primarily on renewable energy sources, like solar and wind, with the diesel generator as a last resort. This reduces emissions, aligns with sustainability goals, and even opens up opportunities for carbon. Hybrid energy solutions enable.

Highlights: • The paper offers a global analysis of complementarity between wind



and solar energy. • Solar-wind complementarity is mapped for land between latitudes 66° S and 66° N. • Complementarity is examined regarding PV panel inclination and storage capacity. The concept of renewable energy. How do we evaluate the complementarity of solar and wind energy systems?

The review of the techniques that have been used to evaluate the complementarity of solar and wind energy systems shows that traditional statistical methods are mostly applied to assess complementarity of the resources, such as correlation coefficient, variance, standard deviation, percentile ranking, and mean absolute error.

Can combined wind and solar power improve grid integration?

The combined use of wind and solar power is crucial for large-scale grid integration. Review of state-of-the-art approaches in the literature survey covers 41 papers. The paper proposes an ideal complementarity analysis of wind and solar sources. Combined wind and solar generation results in smoother power supply in many places.

Can a solar-wind system meet future energy demands?

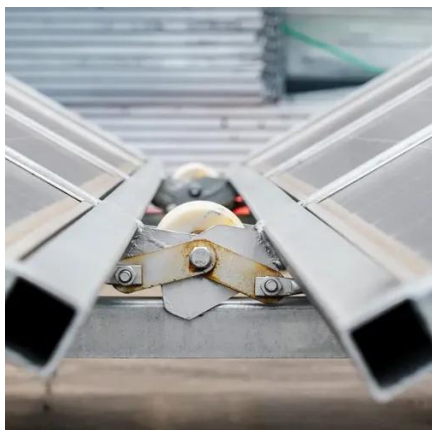
Accelerating energy transition towards renewables is central to net-zero emissions. However, building a global power system dominated by solar and wind energy presents immense challenges. Here, we demonstrate the potential of a globally interconnected solar-wind system to meet future electricity demands.

Can wind and solar power be used together?

The spread use of both solar and wind energy could engender a complementarity behavior reducing their inherent and variable characteristics what would improve predictability and operability of the electrical grid. The study of the combined use of wind and solar power is a fundamental aspect of large-scale grid integration.



How many solar container communication stations are there with win



Small-sized aerial solar container communication station ...

Overview Can a multi-energy complementary power generation system integrate wind and solar energy? Simulation results validated using real-world data from the southwest region of China. ...

COMPLEMENTARITY URBAN

The invention relates to a communication base station stand-by power supply system based on an activation-type cell and a wind-solar complementary power supply system.



The role of wind and solar complementarity in communication ...

Which cluster of wind power stations exhibit the weakest complementarity with radiation? Analysis of the matrix reveals that the 4th, 5th, 7th, and 8th clusters of wind power stations exhibit the ...



Globally interconnected solar-wind system

...

Here, we outline an optimized, phased pathway for integrating solar and wind energy into a globally interconnected and fully coordinated ...



The role of wind and solar complementarity in communication base stations

Which cluster of wind power stations exhibit the weakest complementarity with radiation? Analysis of the matrix reveals that the 4th, 5th, 7th, and 8th clusters of wind power stations exhibit the ...

Globally interconnected solar-wind system addresses future ...

Here, we outline an optimized, phased pathway for integrating solar and wind energy into a globally interconnected and fully coordinated power system.



How many solar container communication stations are there in a solar

The wind-solar-diesel hybrid power supply system of the communication base station is composed of a wind turbine, a solar cell module, an integrated controller for hybrid ...



Solar container communication wind power construction 2025

Communication base station wind and solar complementary project A copula-based complementarity coefficient: Mar 1, 2025 & #183; In this paper, a wind-solar energy wind ...



GRADE A BATTERY

LiFePO₄ battery will not burn when overcharged or over discharged, overcurrent or short circuit and can withstand high temperatures without decomposition.

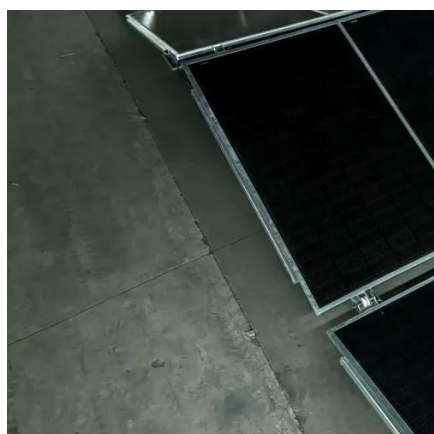


How many communication base stations are there with wind ...

At the hourly scale, the complementarity of wind energy and solar energy shows an increasing trend from east to west, with Qinghai, Yunnan and Xinjiang exhibiting the most pronounced ...

Construction of wind and solar complementary ...

Currently, many wind farms and solar arrays are under construction in Southwest China, and the penetration of intermittent renewable energy is growing rapidly. The operating characteristics ...



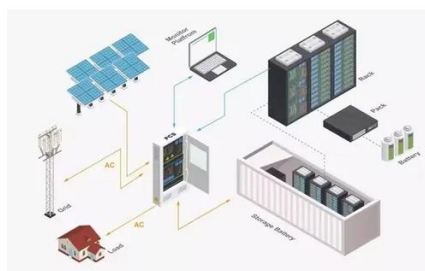
A review on the complementarity between grid-connected solar and wind

The literature survey revealed 41 papers that were analyzed in the manuscript. The combined use of wind and solar in many places results in a smoother power supply, which is ...



Global atlas of solar and wind resources temporal complementarity

This study targets the present literature gap, namely a lack of complementarity study covering explicitly the whole World, based on the same data source and methodology.



How many solar container communication stations are there in a ...

The wind-solar-diesel hybrid power supply system of the communication base station is composed of a wind turbine, a solar cell module, an integrated controller for hybrid ...

A review on the complementarity between grid-connected solar ...

The literature survey revealed 41 papers that were analyzed in the manuscript. The combined use of wind and solar in many places results in a smoother power supply, which is ...





Contact Us

For inquiries, pricing, or partnerships:

<https://sccd-sk.eu>

Phone: +32 2 808 71 94

Email: info@sccd-sk.eu

Scan QR code for WhatsApp.

