



How many volts does a cylindrical solar container lithium battery have





Overview

A single lithium cell typically produces around 3.7 volts. To achieve the necessary voltage for a solar system, multiple cells need to be combined in series. For instance, to create a 12V battery, four cells can be connected in series, achieving approximately 14.8 volts when fully.

A single lithium cell typically produces around 3.7 volts. To achieve the necessary voltage for a solar system, multiple cells need to be combined in series. For instance, to create a 12V battery, four cells can be connected in series, achieving approximately 14.8 volts when fully.

To effectively power a solar panel system, a lithium battery typically requires a voltage range of 12V, 24V, or 48V, depending on the configuration and specific application. Most residential setups utilize 12V or 24V systems, while larger installations, such as commercial or industrial.

Whether you are using a 12V lithium battery, a 48V LiFePO4 system, or a lithium ion cell, voltage tells you how full the battery is, how healthy it remains, and when it should be charged or discharged. Unlike traditional lead-acid batteries, lithium batteries maintain a stable voltage across most.

Here is a table showing the state of charge (SoC) vs voltage for a typical 12V solar battery: The values are approximate and may vary slightly based on factors such as temperature, age, and the specific solar battery type (e.g., lead-acid, AGM, gel, or lithium). A 12V solar battery is considered.

This is the complete voltage chart for LiFePO4 batteries, from the individual cell to 12V, 24V, and 48V. [Download the LiFePO4 voltage chart here](#) (right-click -> save image as). Manufacturers are required to ship the batteries at a 30% state of charge. This is to limit the stored energy during.

The standard operating voltage of the lithium-ion battery system is called the nominal voltage. For lithium-ion batteries, the nominal voltage is approximately 3.7-volt per cell which is the average voltage during the discharge cycle. The average nominal voltage also means a balance between energy.

There are different voltage sizes of lithium batteries with the most popular being



12 volts, 24 volts, and 48 volts. Each one has a different voltage rating at a specific discharge capacity. It is also beneficial to understand the voltage and discharge rate of a 1-cell lithium battery. Use the.



How many volts does a cylindrical solar container lithium battery have



[How many volts does a lithium battery solar panel require?](#)

To effectively power a solar panel system, a lithium battery typically requires a voltage range of 12V, 24V, or 48V, depending on the configuration and specific application.

Solar Battery Voltage Chart

A 12V solar battery is considered fully charged at 12.7 to 12.8 volts, and it should not be allowed to drop below 11.8 volts, as this can cause permanent damage.



[The Complete Guide to Lithium-Ion Battery Voltage Charts](#)

The ideal voltage for a lithium-ion battery depends on its state of charge and specific chemistry. For a typical lithium-ion cell, the ideal voltage when fully charged is about ...

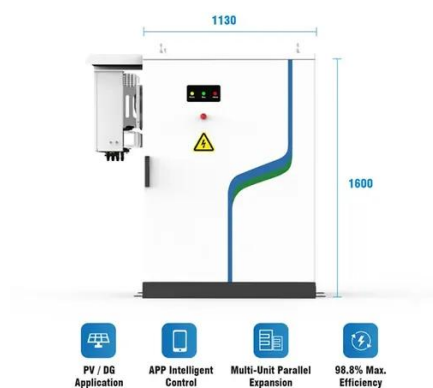


Lithium Ion Battery Voltage Explained: Everything You Need to ...

The fully charged voltage of a 12V LiFePO4 battery is approximately 14.6 volts, whereas a fully discharged voltage is around 10 volts. Similarly, A



48V LiFePO4 battery's ...



[LiFePO4 Voltage Charts \(1 Cell, 12V, 24V, 48V\)](#)

The fully charged voltage of a 12V LiFePO4 battery is approximately 14.6 volts, whereas a fully discharged voltage is around 10 volts. Similarly, A 48V LiFePO4 battery's ...

[The Ultimate Guide to Cylindrical Batteries](#)

Cylindrical lithium batteries usually have a five-digit model number. Starting with the numbers on the left, the first and second numbers refer to the battery diameter. The third ...



How Many Volts Is a Cylindrical Lithium Battery? Key Insights for

The answer isn't one-size-fits-all--it depends on chemistry and design. Most commercial cylindrical cells operate at 3.6V to 3.7V, but specialized models can reach 4.2V when fully ...



[How many volts does a lithium battery solar panel ...](#)

To effectively power a solar panel system, a lithium battery typically requires a voltage range of 12V, 24V, or 48V, depending on the ...



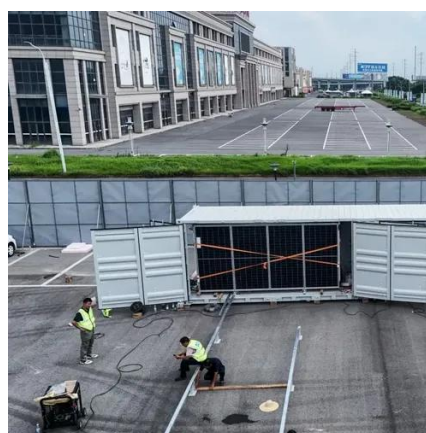
[LiFePO4 Voltage Charts \(1 Cell, 12V, 24V, 48V\)](#)

So when you receive a 12v lifepo4 battery, it will be around 13 volts. You need to know that the discharge rate affects the voltage. If we discharge a battery at 1C, the voltage ...



[Lithium Ion Battery Voltage Chart \(Voltage and Charge\)](#)

There are different voltage sizes of lithium batteries with the most popular being 12 volts, 24 volts, and 48 volts. Each one has a different voltage rating at a specific discharge capacity. It is also ...



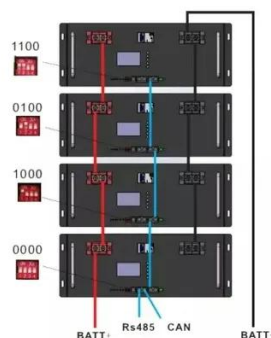
[The Ultimate Guide to Cylindrical Batteries](#)

Cylindrical lithium batteries usually have a five-digit model number. Starting with the numbers on the left, the first and second ...



[The Complete Guide to Lithium-Ion Battery Voltage ...](#)

The ideal voltage for a lithium-ion battery depends on its state of charge and specific chemistry. For a typical lithium-ion cell, the ideal ...



[Ultimate Guide to Lithium-Ion Battery Voltage Chart](#)

Thanks to their safe nature, lithium-ion batteries are common in solar generators. Different voltages sizes of lithium-ion batteries are available, such as 12V, 24V, and 48V. The ...

[Ultimate Guide to Lithium-Ion Battery Voltage ...](#)

Thanks to their safe nature, lithium-ion batteries are common in solar generators. Different voltages sizes of lithium-ion batteries are ...



Solar Battery Voltage Chart

A 12V solar battery is considered fully charged at 12.7 to ...



Lithium Battery Voltage Chart Guide

Learn how to read a lithium battery voltage chart, including LiFePO4, 12V, 24V, and 48V systems. Simple explanations, real examples, and SOC insights.





Contact Us

For inquiries, pricing, or partnerships:

<https://sccd-sk.eu>

Phone: +32 2 808 71 94

Email: info@sccd-sk.eu

Scan QR code for WhatsApp.

