



How many watts and voltage does the inverter usually have





Overview

A typical power inverter device or circuit requires a stable DC power source capable of supplying enough current for the intended power demands of the system. The input voltage depends on the design and purpose of the inverter. Examples include: • 12 V DC, for smaller consumer and commercial inverters that typically run fro.



How many watts and voltage does the inverter usually have



[Everything You Need to Know About Inverter ...](#)

Since inverters convert DC power to AC power the output of the inverter is measured in either power (kW AC) or current (amps) and ...

[How Many Watt Inverter Do I Need? , Click to ...](#)

First, calculate the total wattage of all the devices you plan to power. Each appliance has a specific running power and may require ...



[How Many Watt Inverter Do I Need? , Click to Learn More](#)

First, calculate the total wattage of all the devices you plan to power. Each appliance has a specific running power and may require specific surge power. Here are some ...



[Inverter Size Calculator , Find Your Perfect Power Match](#)

Standard 12v models top out around 3000w (24v/48v ~ 4000w). To proceed: Upgrade to a higher-voltage system (24 V/48 V) for a larger



inverter. Consider a higher ...



[How To Read And Interpret An Inverter Specification](#)

Input voltage indicates the DC voltage required to operate the inverter. Inverters generally have an input voltage of 12V, 24V, or 48V. ...

[How Many Amps Does a 100, 300, 500, 600, 750, ...](#)

If your inverter has a power of 750 watts, then you will need to see whether the voltage of your inverter is 12 volts, 14 volts, 24 volts, or ...



Power inverter

Static inverters do not use moving parts in the conversion process. Power inverters are primarily used in electrical power applications where high currents and voltages are present; circuits ...



[Everything You Need to Know About Inverter Sizing](#)

Since inverters convert DC power to AC power the output of the inverter is measured in either power (kW AC) or current (amps) and voltage (typically 240v AC). For ...



[What Does An Inverter Do? Complete Guide To ...](#)

Learn what inverters do, how they convert DC to AC power, types available, and applications. Complete guide with sizing tips, safety ...



[Inverter Specifications and Data Sheet](#)

The article provides an overview of inverter functions, key specifications, and common features found in inverter systems, along with an example of power calculations and inverter ...



How Many Amps Does a 100, 300, 500, 600, 750, 1000, 1500, ...

If your inverter has a power of 750 watts, then you will need to see whether the voltage of your inverter is 12 volts, 14 volts, 24 volts, or 28 volts. In most inverters with a power ...



51.2V 150AH, 7.68KWH



[The Only Inverter Size Chart You'll Ever Need](#)

We have created a comprehensive inverter size chart to help you select the correct inverter to power your appliances.



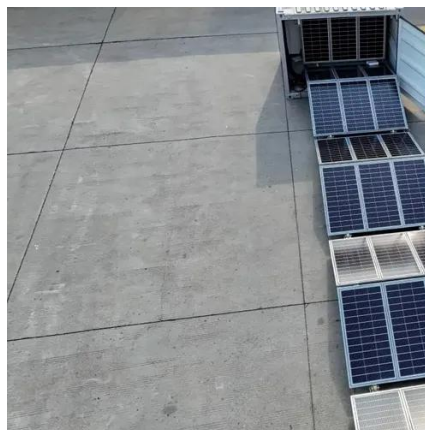
Power inverter

Overview
Input and output
Batteries
Applications
Circuit description
Size
History
See also

A typical power inverter device or circuit requires a stable DC power source capable of supplying enough current for the intended power demands of the system. The input voltage depends on the design and purpose of the inverter. Examples include: o 12 V DC, for smaller consumer and commercial inverters that typically run fro...

What Does An Inverter Do? Complete Guide To Power Conversion

Learn what inverters do, how they convert DC to AC power, types available, and applications. Complete guide with sizing tips, safety advice, and expert insights.



[Inverter Basics and Selecting the Right Model](#)

Inverters come in size ratings all the way from 50 watts up to 50,000 watts, although units larger than 11,000 watts are very seldom used in ...



Inverter Basics and Selecting the Right Model

Inverters come in size ratings all the way from 50 watts up to 50,000 watts, although units larger than 11,000 watts are very seldom used in household or other PV systems.



How To Read And Interpret An Inverter Specification

Input voltage indicates the DC voltage required to operate the inverter. Inverters generally have an input voltage of 12V, 24V, or 48V. The inverter selected must match the power source, ...



Contact Us

For inquiries, pricing, or partnerships:

<https://sccd-sk.eu>

Phone: +32 2 808 71 94

Email: info@sccd-sk.eu

Scan QR code for WhatsApp.

