



How many watts does a monocrystalline silicon solar panel have





Overview

What is the maximum wattage of a monocrystalline solar panel?

The maximum wattage of a monocrystalline solar panel typically ranges between 300 to 400 watts, depending on various factors such as efficiency, size, and technology advancements. 1.

What is the maximum wattage of a monocrystalline solar panel?

The maximum wattage of a monocrystalline solar panel typically ranges between 300 to 400 watts, depending on various factors such as efficiency, size, and technology advancements. 1.

What is the maximum wattage of a monocrystalline solar panel?

The maximum wattage of a monocrystalline solar panel typically ranges between 300 to 400 watts, depending on various factors such as efficiency, size, and technology advancements. 1. The efficiency of monocrystalline panels can reach.

Monocrystalline solar panels are usually 20-25% efficient. are around 10-20% efficient. This means that monocrystalline panels can convert more daylight into electricity for your household and the grid than other types of panels, per square metre. Polycrystalline models and solar tiles usually last.

Monocrystalline solar panels are a type of solar panel that has gained popularity in recent years due to their high efficiency and durability. They are made from a single crystal of silicon, which allows for the efficient movement of electrons through the panel. Monocrystalline solar panels are.

How Much Does One Monocrystalline Solar Panel Cost?

A single monocrystalline panel typically costs between \$350 and \$525 for a 350-watt unit. Pricing varies by manufacturer, efficiency rating, and technology tier. While these panels carry a higher price tag than other types, their performance and.

Monocrystalline solar panels, known as mono panels, are a highly popular choice



for capturing solar energy, particularly for residential photovoltaic (PV) systems. With their sleek, black appearance and high sunlight conversion efficiency, monocrystalline panels are the most common type of rooftop.

Key takeawaysJA Solar offers many residential solar panel options with high-efficiency ratings ranging from 20%-21%.JA Solar panels are half-cut cell panels, a technology that increases their energy output. They also utilize PERC technology.JA Solar offers a competitive warranty and has great.



How many watts does a monocrystalline silicon solar panel have

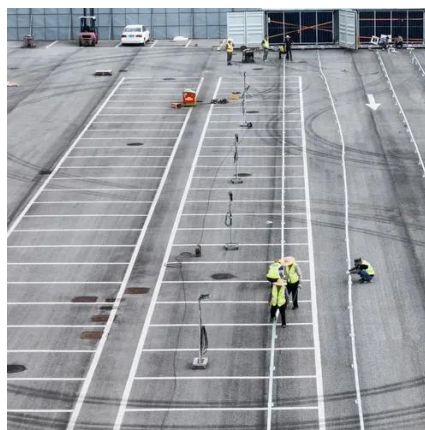


[Monocrystalline solar panels: the expert guide \[2025\]](#)

Monocrystalline solar panels are usually 20-25% efficient, whereas polycrystalline panels' efficiency ratings tend to fall between 18% and 21%, and solar tiles are around 10-20% ...

What is the maximum wattage of a monocrystalline solar panel?

The maximum wattage of a monocrystalline solar panel typically ranges between 300 to 400 watts, depending on various factors such as efficiency, size, and technology ...



[What is Monocrystalline Solar Panel: A Consolidated Guide](#)

Mostly residential mono-panels produce between 250W and 400W. A 60-cell mono-panel produces 310W-350W on average. Due to their single-crystal construction, ...



What Is a Monocrystalline Solar Panel? Definition, Performance

Monocrystalline solar panels have an efficiency rate of up to 25%, which is significantly higher than polycrystalline and thin-film panels, which



max out at 16% and 18%, ...



Monocrystalline Solar Panels: 2025 Costs & How They Work

A single monocrystalline panel typically costs between \$350 and \$525 for a 350-watt unit. Pricing varies by manufacturer, efficiency rating, and technology tier. While these ...

Monocrystalline solar panels: the expert guide [2025]

Monocrystalline solar panels are usually 20-25% efficient, whereas polycrystalline panels' efficiency ratings tend to fall between 18% ...



Monocrystalline Silicon

Imagine fitting a quart into a pint pot, that's what monocrystalline silicon achieves. It delivers more power output per square foot, making it an ideal choice for space-constrained rooftops.





What Is a Monocrystalline Solar Panel? Definition, ...

Monocrystalline solar panels have an efficiency rate of up to 25%, which is significantly higher than polycrystalline and thin-film panels, ...

ESS



HOW MANY WATTS DOES A MONO CRYSTALLINE SOLAR PANEL ...

For example, JAM60S20/MR solar panels offer 21 per cent efficiency with a peak power output of 390W, at a lower price than similar solar panels from many other manufacturers.

Understanding Monocrystalline Solar Panels

Monocrystalline solar panels are a type of solar panel that has gained popularity in recent years due to their high efficiency and durability. They are made from a single crystal of ...



Solar Panel Power: How Many Watts Does One Panel Produce?

Monocrystalline silicon panels typically produce the highest wattage per panel, ranging from 350 to 450 watts for residential applications. These panels use single-crystal silicon cells that ...





What is Monocrystalline Solar Panel: A ...

Mostly residential mono-panels produce between 250W and 400W. A 60-cell mono-panel produces 310W-350W on average. Due to ...

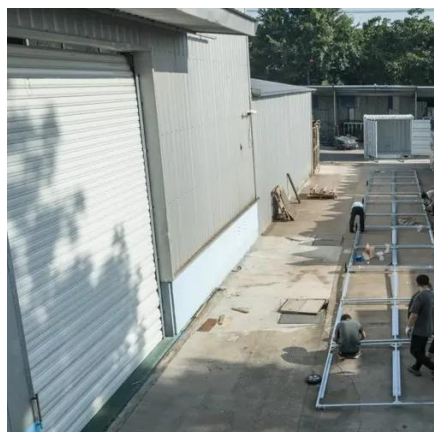


Monocrystalline Solar Panels: How They Work, Pros & Cons

Monocrystalline solar panels typically have efficiency ratings of 15-20% or more, compared to 13-16% for polycrystalline solar panels. Their higher power density means ...

Monocrystalline Solar Panels: How They Work, ...

Monocrystalline solar panels typically have efficiency ratings of 15-20% or more, compared to 13-16% for polycrystalline solar panels. ...



HOW MANY WATTS DOES A MONO CRYSTALLINE SOLAR ...

For example, JAM60S20/MR solar panels offer 21 per cent efficiency with a peak power output of 390W, at a lower price than similar solar panels from many other manufacturers.



What is the maximum wattage of a monocrystalline ...

The maximum wattage of a monocrystalline solar panel typically ranges between 300 to 400 watts, depending on various factors ...



Monocrystalline Solar Panels: 2025 Costs & How ...

A single monocrystalline panel typically costs between \$350 and \$525 for a 350-watt unit. Pricing varies by manufacturer, efficiency ...



Contact Us

For inquiries, pricing, or partnerships:

<https://sccd-sk.eu>

Phone: +32 2 808 71 94

Email: info@sccd-sk.eu

Scan QR code for WhatsApp.

