



# How many watts does solar power generation have in 500 square meters





## Overview

---

The average solar panel generates between 150 to 200 watts per square meter, 2. This output depends on factors like location, orientation, and panel efficiency, 3. Enhanced technologies and optimal conditions can push this figure higher.

The average solar panel generates between 150 to 200 watts per square meter, 2. This output depends on factors like location, orientation, and panel efficiency, 3. Enhanced technologies and optimal conditions can push this figure higher.

Solar panels have become a cornerstone of renewable energy, but many wonder: How much power can a single square meter of solar panels actually produce?

Let's break down the science behind photovoltaic efficiency. Under optimal conditions (5 peak sun hours): At noon under direct sunlight: \*Note: 1m<sup>2</sup>.

Estimates the energy production of grid-connected photovoltaic (PV) energy systems throughout the world. It allows homeowners, small building owners, installers and manufacturers to easily develop estimates of the performance of potential PV installations. Operated by the Alliance for Sustainable.

Alright, we have gathered the typical sizes (areas) of 10 different wattage solar panels ranging from 100-watt to 500-watt panels. We have calculated the solar output per square foot for each of these standard-sized panels, and gathered the results in this chart: Just from this, we have a good idea.

Solar photovoltaic technology has gained significant traction in recent years as a sustainable energy solution. 1. The average solar panel generates between 150 to 200 watts per square meter, 2. This output depends on factors like location, orientation, and panel efficiency, 3. Enhanced.

The answer lies in something most solar salespeople never properly explain— solar irradiance and your actual energy potential per square meter. Here's what's shocking: A single square meter of solar panel can generate anywhere from 150 to 250 watts under ideal conditions. But "ideal" rarely exists.

The Solar Panel Output Calculator is a highly useful tool so you can understand the total output, production, or power generation from your solar panels per day,



month, or year. Input your solar panel system's total size and the peak sun hours specific to your location, this calculator simplifies. What is solar panel watts per square meter (W/M)?

Solar panel watts per square meter (W/m) measures the power output of a solar panel based on its size. Compare solar panels to see which generates most electricity per square meter. A higher W/m value means a solar panel produces more power from a given area. This can help you determine how many solar panels you need for your energy needs.

How much electricity can a solar panel generate?

To put this into perspective, if you install 10 square metres of monocrystalline solar panels, you could generate up to 2,200 watts (2.2 kW) of electricity, sufficient to power basic household appliances. The solar panel price varies based on type, size, and efficiency. Here's a general pricing guide in India:.

How much energy does a 400 watt solar panel produce?

A 400-watt panel can generate roughly 1.6–2.5 kWh of energy per day, depending on local sunlight. To cover the average U.S. household's 900 kWh/month consumption, you typically need 12–18 panels. Output depends on sun hours, roof direction, panel technology, shading, temperature and age.

How much solar power is generated per square metre?

The amount of solar power generated per square metre varies based on the type of solar panel used. Here's a comparison: 1. Monocrystalline Solar Panels – Up to 22% efficiency, producing 220W per square metre. 2. Polycrystalline Solar Panels – Around 18% efficiency, generating 180W per square metre. 3.



## How many watts does solar power generation have in 500 square met



### [Solar Energy Generation Per Square Metre: A Complete Guide](#)

On a clear day, each square metre of the Earth's surface receives approximately 1,000 watts of solar energy, also known as 1 kW/m<sup>2</sup>. This energy can be converted into ...

### [Solar Panel Watts Per Square Foot: 'We \(Finally\) Did The Math'](#)

There is a lot of disagreement on how many watts can solar panels produce per square foot. Some say as little as 10 watts per square foot; others say it's 20+ watts per square foot.



### **How many watts of solar photovoltaic power generation per square ...**

The duration and intensity of sunlight a solar installation is subjected to directly influence the power output measured in watts per square meter. Longer daylight hours allow ...

## **Solar Panel Wattage Calculator**

This solar panel wattage calculator allows you to calculate the recommended solar panel wattage according to the energy consumption of your household appliances. If you want to know more ...



### [How Much Energy Does A Solar Panel Produce?](#)

If you're thinking about going solar, one of your biggest questions is likely: how much electricity can a solar panel actually produce? This in-depth guide breaks down the ...

### **PVWatts Calculator**

NREL's PVWatts ® Calculator Estimates the energy production of grid-connected photovoltaic (PV) energy systems throughout the world. It allows homeowners, small building owners, ...



### [How many watts of solar photovoltaic power ...](#)

The duration and intensity of sunlight a solar installation is subjected to directly influence the power output measured in watts per ...





## Solar Panel Output Per Square Meter

Discover how much electricity solar panels generate per square meter, explore efficiency factors, technology comparisons, and future innovations in photovoltaic energy.



### [Solar Power Per Square Meter Calculator](#)

A typical solar panel produces 150-250 watts per square meter under standard test conditions (1,000 W/m<sup>2</sup> irradiance, 25°C). In real-world conditions, expect 120-200W/m<sup>2</sup> during peak sun ...



### [Solar Panel Output Calculator , Get Maximum Power Output](#)

Input your solar panel system's total size and the peak sun hours specific to your location, this calculator simplifies the complex process of estimating the energy your solar ...



## Solar Panel Output Per Square Meter

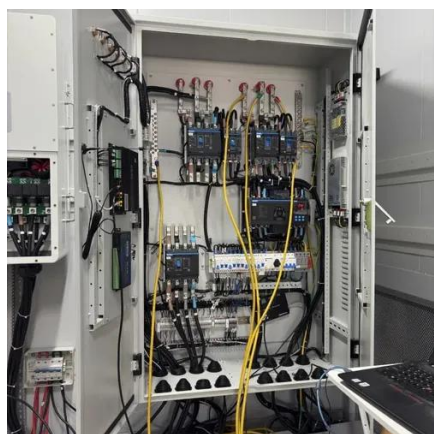
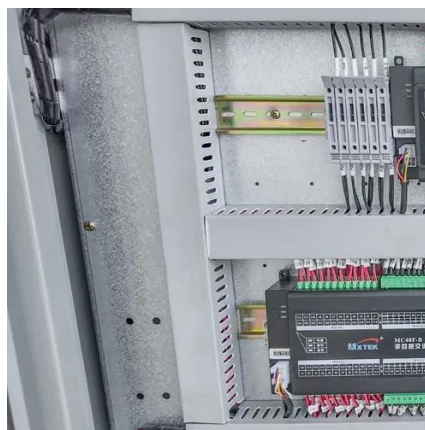
Discover how much electricity solar panels generate per square meter, explore efficiency factors, technology comparisons, and ...





## [Solar Panel Output Calculator , Get Maximum ...](#)

Input your solar panel system's total size and the peak sun hours specific to your location, this calculator simplifies the complex ...



## [Solar Panel Watts Per Square Meter Explained](#)

Learn how to measure solar panel efficiency using solar panel watts per square meter with this comprehensive guide.



## Contact Us

---

For inquiries, pricing, or partnerships:

<https://sccd-sk.eu>

Phone: +32 2 808 71 94

Email: [info@sccd-sk.eu](mailto:info@sccd-sk.eu)

Scan QR code for WhatsApp.

