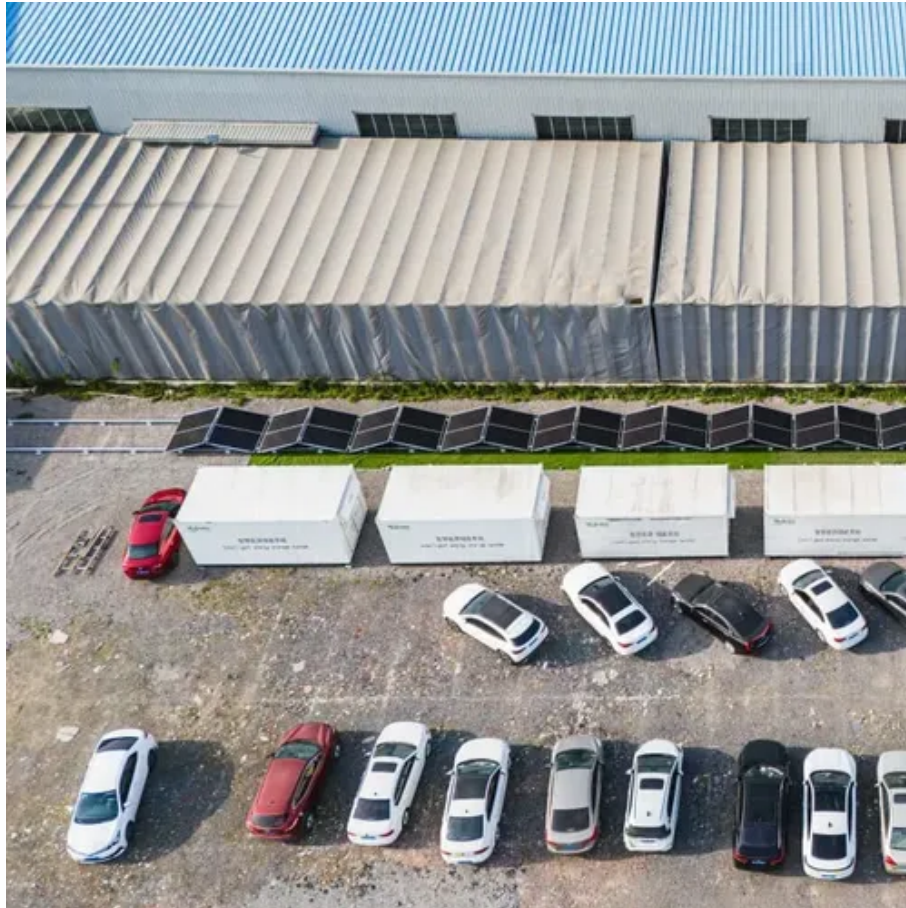




How many watts of power does a large solar panel have





Overview

How much power does a solar panel produce?

The power rating of solar panels is in “Watts” or “Wattage,” which is the unit used to measure power production. These days, the latest and best solar panels for residential properties produce between 250 and 400 Watts of electricity.

What is solar panel wattage?

Solar panel wattage is the maximum amount of power a solar panel can produce under ideal conditions. It’s measured in watts (W) and represents the panel’s peak power output. For example, a 400-watt solar panel can generate up to 400 watts of electricity when exposed to full sunlight in a controlled test environment.

How many watts can a 400 watt solar panel produce?

A 100-watt panel can produce 100 watts per hour in direct sunlight. A 400-watt panel can generate 400 watts per hour under the same conditions. This doesn’t mean they’ll produce that amount all day, output varies with weather, shade, and panel orientation. Solar Power Meter Digital Solar Energy Meter Radiation Measurement.

How many Watts Does a commercial solar panel use?

Large rooftops and utility-scale projects use bigger, more powerful commercial solar panels ranging from 500 to 700 watts. These modules have grown in both physical size and efficiency, allowing developers to reduce racking, wiring, and labor costs per watt. In 2013, 300W commercial panels were common.



How many watts of power does a large solar panel have



How many watts does a large solar panel have

Solar panels are typically categorized as small, medium, or large, with large panels generally offering higher wattage outputs. Large ...

How Much Energy Does A Solar Panel Produce?

About 97% of solar panels quoted on the EnergySage ...



How Many Watts Are Solar Panels? Essential Facts and Tips

When it comes to solar panels, wattage is a crucial metric that determines how much electricity a panel can generate under optimal conditions. The wattage of solar panels ...

Solar Panel Wattage & Output Explained

Large rooftops and utility-scale projects use bigger, more powerful commercial solar panels ranging from 500 to 700 watts. These ...



How Much Watts Does a Solar Panel Produce: Myths & Facts

The average solar panel typically produces between 250 to 400 watts of power under optimal conditions. This range can vary based on several factors, including: Panel Type: ...



Solar Panel Wattage & Output Explained

Large rooftops and utility-scale projects use bigger, more powerful commercial solar panels ranging from 500 to 700 watts. These modules have grown in both physical size ...



What Size Are Solar Panels and How Much Power Do They ...

The power output of a solar panel is directly linked to its physical size and the efficiency of the cells inside, with the rating measured in watts (W). A larger panel, such as a ...





[How Much Energy Does A Solar Panel Produce? , EnergySage](#)

About 97% of solar panels quoted on the EnergySage Marketplace in 2025 are 400 to 460 watts--expect to see panel outputs in this range in your quotes. Your panels' ...



[Solar Panel Sizes and Wattage Explained](#)

Over 179 (GW) of solar capacity is installed nationwide and it's capable of powering roughly 33 million homes. While it takes roughly ...



[How Much Energy Does A Solar Panel Produce?](#)

Most residential panels in 2025 are rated 250-550 watts, with 400-watt models becoming the new standard. A 400-watt panel can generate roughly 1.6-2.5 kWh of energy ...



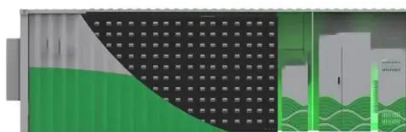
[How Much Power Does A Solar Panel Produce?](#)

These days, the latest and best solar panels for residential properties produce between 250 and 400 Watts of electricity. While solar panel systems start at 1 KW and produce between 750 and



Solar Panel Wattage Explained: How Many Watts Do You Need?

This guide will explain solar panel wattage clearly, with real-life examples and simple calculations anyone can follow. Whether you're a homeowner exploring solar energy or a ...



How Much Power Does A Solar Panel Produce?

Most residential panels in 2025 are rated 250-550 watts, with 400-watt models becoming the new standard. A 400-watt panel can ...

Solar Panel Sizes and Wattage Explained

Over 179 (GW) of solar capacity is installed nationwide and it's capable of powering roughly 33 million homes. While it takes roughly 17 (400-watt) panels to power a home.



How many watts does a large solar panel have , NenPower

Solar panels are typically categorized as small, medium, or large, with large panels generally offering higher wattage outputs. Large solar panels, often employed in both ...



Contact Us

For inquiries, pricing, or partnerships:

<https://sccd-sk.eu>

Phone: +32 2 808 71 94

Email: info@sccd-sk.eu

Scan QR code for WhatsApp.

