



How much current does a 60kw solar panel generate





Overview

This translates to a current of approximately 6.9 to 11.1 amps when operational under standard testing conditions.

This translates to a current of approximately 6.9 to 11.1 amps when operational under standard testing conditions.

A 300-watt solar panel will produce anywhere from 0.90 to 1.35 kWh per day (at 4-6 peak sun hours locations). A 400-watt solar panel will produce anywhere from 1.20 to 1.80 kWh per day (at 4-6 peak sun hours locations). The biggest 700-watt solar panel will produce anywhere from 2.10 to 3.15 kWh.

Solar panels are a powerhouse of renewable energy, but figuring out exactly how much electricity they generate daily can feel overwhelming. In this guide, we ' ll simplify the math, provide a handy formula, and break down solar panel kWh production based on size, location, and sunlight. Whether you.

Solar panels degrade slowly, losing about 0.5% output per year, and often last 25–30 years or more. Most residential panels in 2025 are rated 250–550 watts, with 400-watt models becoming the new standard. A 400-watt panel can generate roughly 1.6–2.5 kWh of energy per day, depending on local.

Depending on where in Australia (or around the world) you are, a 60kW solar system will produce a different amount of energy each day. As an average amount, you can see here how much this system will produce in some of the major regions in Australia by switching between each tab. What Size Inverter.

The Solar Panel Output Calculator is a highly useful tool so you can understand the total output, production, or power generation from your solar panels per day, month, or year. Input your solar panel system's total size and the peak sun hours specific to your location, this calculator simplifies.

Modern Solar Panel Output: In 2025, standard residential solar panels produce 390-500 watts, with high-efficiency models exceeding 500 watts. A typical 400-watt panel generates 1,500-2,500 kWh annually depending on location, with systems in sunny regions like Arizona producing up to 1,022 kWh per. How much energy do solar panels produce?



Two variables dictate how much energy your solar panels produce: 1. Solar Panel Wattage: Higher-wattage panels generate more kWh. Common sizes include 100W (small setups), 300-400W (residential), and 500W+ (commercial systems). Example: A 500W panel produces 50% more energy than a 250W panel under the same conditions. 2. Peak Sun Hours:.

How big is a 60kW solar power system?

A 60kW system using 370W panels will require about 284.2 square meters of roof to be installed. Each 370W panel measures about 1.75m x 1m. 60kW solar power systems are mostly suitable for Larger businesses with high energy needs. This size of solar power system is classed as "Commercial/Industrial".

How many square meters does a 60kW solar system require?

This is because as panels get large (in Watts) they also become a little bit more efficient. A 60kW system using 370W panels will require about 284.2 square meters of roof to be installed. Each 370W panel measures about 1.75m x 1m. 60kW solar power systems are mostly suitable for Larger businesses with high energy needs.

How much energy does a 400 watt solar panel produce?

A 400-watt solar panel will produce anywhere from 1.20 to 1.80 kWh per day (at 4-6 peak sun hours locations). The biggest 700-watt solar panel will produce anywhere from 2.10 to 3.15 kWh per day (at 4-6 peak sun hours locations). Let's have a look at solar systems as well:



How much current does a 60kw solar panel generate



[How Much Energy Does a Solar Panel Produce in 2025?](#)

In 2025, standard residential solar panels produce between 390-500 watts of power, with high-efficiency models reaching 500+ watts. However, the actual energy output ...

[How to Calculate Daily kWh from Your Solar ...](#)

Higher-wattage panels generate more kWh. Common sizes include 100W (small setups), 300-400W (residential), and 500W+ ...



[How Much Energy Does A Solar Panel Produce?](#)

If you're thinking about going solar, one of your biggest questions is likely: how much electricity can a solar panel actually produce? This in-depth guide breaks down the ...



[60kW Solar System Information - Facts & Figures](#)

Depending on where in Australia (or around the world) you are, a 60kW solar system will produce a different amount of energy each day. As an



average amount, you can see here how much ...



[How much current does a solar photovoltaic panel ...](#)

Under standard testing conditions, a panel's output is defined in watts, but current can be derived using the formula: Power (P) = ...



How to Calculate Daily kWh from Your Solar Panels - EcoVault

Higher-wattage panels generate more kWh. Common sizes include 100W (small setups), 300-400W (residential), and 500W+ (commercial systems). Example: A 500W panel ...



[How Many kWh Does A Solar Panel Produce Per Day?](#)

It's quite interesting to see exactly how many kWh does a solar panel produce per day. We will do the math, and show you how you can do the math quite easily.





Solar Panel Calculator , Lowe's

Once you've determined the right kind of solar panels for your home, look at your latest electric bill. This will help you determine your average annual energy usage, which will ...



[Solar Panel Output Calculator , Get Maximum Power Output](#)

Welcome to the Solar Panel Output Calculator!
This tool is designed to help you estimate the daily, monthly, or yearly energy output of your solar panel system in kilowatt ...



PVWatts Calculator

Estimates the energy production and cost of energy of grid-connected photovoltaic (PV) energy systems throughout the world. It allows homeowners, small building owners, installers and ...



[60kW Solar System Information - Facts & Figures](#)

Welcome to the Solar Panel Output Calculator!
This tool is designed to help you estimate the daily, monthly, or yearly energy output ...





How Much Energy Does A Solar Panel Produce?

If you're thinking about going solar, one of your biggest questions is likely: how much electricity can a solar panel actually ...

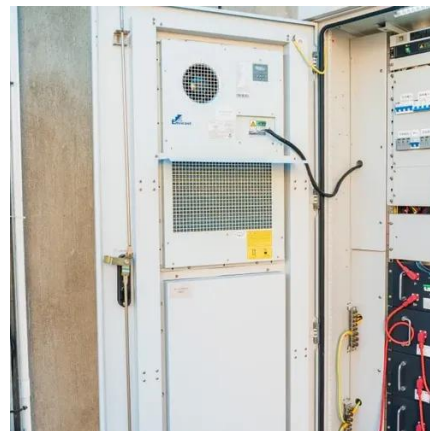


How much current does a solar photovoltaic panel produce?

Under standard testing conditions, a panel's output is defined in watts, but current can be derived using the formula: $\text{Power (P)} = \text{Voltage (V)} \times \text{Current (I)}$ Knowing voltage and ...

Solar Panel Output: How Much Power Can You Expect?

In short, solar panel production depends on a variety of factors -- including panel wattage, efficiency, and total sunlight exposure. At the array level, production is simply a ...





Contact Us

For inquiries, pricing, or partnerships:

<https://sccd-sk.eu>

Phone: +32 2 808 71 94

Email: info@sccd-sk.eu

Scan QR code for WhatsApp.

