



How much current does a 6V solar panel of 50cm x 21cm have





Overview

To determine the current output of a 6V solar panel, one needs to consider several factors like light intensity, panel specifications, load requirements, and the formula for current calculation. 1. Measure the voltage output, 2. Determine the load resistance, 3. Use.

To determine the current output of a 6V solar panel, one needs to consider several factors like light intensity, panel specifications, load requirements, and the formula for current calculation. 1. Measure the voltage output, 2. Determine the load resistance, 3. Use.

To determine the current output of a 6V solar panel, one needs to consider several factors like light intensity, panel specifications, load requirements, and the formula for current calculation. 1. Measure the voltage output, 2. Determine the load resistance, 3. Use Ohm's Law to calculate current.

Use our solar panel amps calculator to calculate the solar panel amps or convert solar panel watts to amps. How to use this calculator?

Solar panel output: Enter the total capacity of your solar panel (Watts). V_{mp} : Is the operating voltage of the solar panel which you can check at the back side of.

The following calculator will help you calculate the DC current (from the controller to the battery) and the AC current (from the inveter to your house). You have to input your solar panel rated power (200w, 300w, 400w, etc.) and the system overall loss will have a default 22% value, but you could.

To find the average daily current output, use the formula $\text{Current (A)} = \text{Power (W)} / \text{Voltage (V)}$. 1. Current at Maximum Power (I_{mp}) The Current at Maximum Power (I_{mp}) refers to the amount of current a solar panel produces when it's operating at its maximum power output. When connected to MPPT.

Solar Panel Calculator is an online tool used in electrical engineering to estimate the total power output, solar system output voltage and current when the number of solar panel units connected in series or parallel, panel efficiency, total area and total width. These estimations can be derived.



It explains that a solar panel's electricity generation depends on its size, sunlight intensity, and the circuit it's connected to, with larger panels not always producing higher current. To calculate amps, a digital multimeter is used to measure the current produced by the panel, providing safety.



How much current does a 6V solar panel of 50cm x 21cm have



[Solar Panel Amps Calculator \(Watts to Amps\) - Dot Watts®](#)

Solar Watts to Amp Calculator
Some Key Points Before You Leave
Solar Panel Amps
Other Solar Calculators
We usually measure or convert the watts into amps of solar panels to figure out how much current (amps) is being stored in the battery. Or we measure the amperage of the solar panel output to select the wire size from solar panels to the charge controller. So if your goal is to figure out how many amps are being stored in the battery then enter the See more on dotwatts

Videos of How Much Current Does a 6V Solar Panel Of 50Cm X 2...

Watch video2:59How to Measure Solar Panel Output using Multimeter , Measure Voltage, Amps & Calculate Watts The Gloves Man43.5K viewsFeb 28, 2024
Watch video8:03Measuring Solar Panel Output , Ultimate DIY Guide Everyday Solar62K viewsMay 1, 2024
Watch video7:29Series vs Parallel Solar Panel Wiring Basics - Volts, Amps, Cost & More Explained The Solar Lab298.5K viewsSep 4, 2024
Watch full videoSolars House

Solar Current Calculator - Solars House

The calculator output will be the current supplied to batteries (DC current) at any voltage you specify, and the AC current supplied to your house according to your country's voltage rating.

[Understanding Solar Panel Voltage and Current ...](#)

Decode solar panels specifications to safely connect your panels to power station or charge



controller. This quick guide unlocks full solar potential.



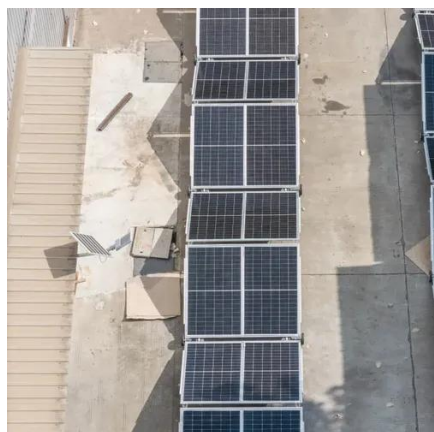
[Solar Panel Amps Calculator \(Watts to Amps\) - Dot Watts®](#)

We usually measure or convert the watts into amps of solar panels to figure out how much current (amps) is being stored in the battery. Or we measure the amperage of the solar ...



[How to calculate the current of 6v solar panel , NenPower](#)

To determine the current output of a 6V solar panel, one needs to consider several factors like light intensity, panel specifications, load requirements, and the formula for current ...



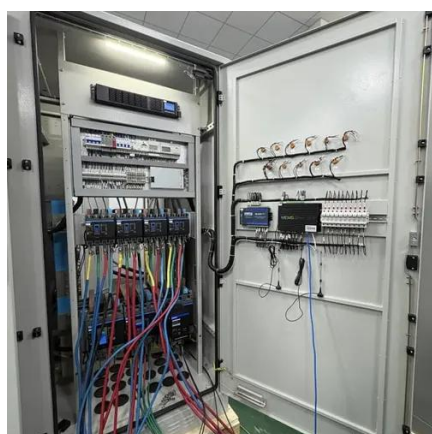
Solar Panel Current Calculator

This article will simplify key electrical concepts related to solar energy, explain solar panel technology, and guide you on measuring the ...



Solar Panel Current Calculator

This article will simplify key electrical concepts related to solar energy, explain solar panel technology, and guide you on measuring the current from your panels. With this ...



[Solar Panel Amps Calculator: What's a Panels Current?](#)

This solar panel amps calculator helps you find the current of your solar panels. We also give you insight into Ohm's Law and how to read your panel's specs.

Solar Panel Power Calculator

Solar Panel Calculator is an online tool used in electrical engineering to estimate the total power output, solar system output voltage and current when the number of solar panel units ...



Solar Panel Amps Calculator

To calculate solar panel amperage, identify their rated power output in watts, which serves as a comparison of their electricity-generating potential. The panel's operating ...



Solar Electrical Calculator Tool

It helps solar designers calculate wire sizes (AWG/mm²), voltage drops, breaker ratings, conduit fill, and more, based on system voltage, current, and installation parameters.



[Solar Panel Amps Calculator: What's a Panels ...](#)

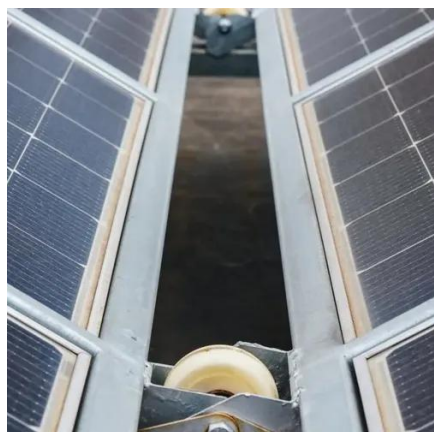
This solar panel amps calculator helps you find the current of your solar panels. We also give you insight into Ohm's Law and how to read your ...

Solar Panel Power Calculator

Solar Panel Calculator is an online tool used in electrical engineering to estimate the total power output, solar system output voltage and current ...



**200kWh
Battery Cluster**



[How much current does a 6 volt solar panel draw , NenPower](#)

To determine how much current a 6-volt solar panel draws, the measurement depends on various factors such as the panel's specifications, sunlight intensity, and load ...



Understanding Solar Panel Voltage and Current Output

Decode solar panels specifications to safely connect your panels to power station or charge controller. This quick guide unlocks full solar potential.



Solar Current Calculator

The calculator output will be the current supplied to batteries (DC current) at any voltage you specify, and the AC current supplied to your house according to your country's voltage rating.



Contact Us

For inquiries, pricing, or partnerships:

<https://sccd-sk.eu>

Phone: +32 2 808 71 94

Email: info@sccd-sk.eu

Scan QR code for WhatsApp.

