



How much electricity can a thousand square meters of solar panels generate in a day





Overview

A 400-watt panel can generate roughly 1.6–2.5 kWh of energy per day, depending on local sunlight. To cover the average U.S. household's 900 kWh/month consumption, you typically need 12–18 panels. Output depends on sun hours, roof direction, panel technology, shading .

A 400-watt panel can generate roughly 1.6–2.5 kWh of energy per day, depending on local sunlight. To cover the average U.S. household's 900 kWh/month consumption, you typically need 12–18 panels. Output depends on sun hours, roof direction, panel technology, shading .

Solar panels have become a cornerstone of renewable energy, but many wonder: How much power can a single square meter of solar panels actually produce?

Let's break down the science behind photovoltaic efficiency. Under optimal conditions (5 peak sun hours): At noon under direct sunlight: *Note: 1m².

Solar energy per square meter refers to the amount of solar radiation impacting a specific area, measured in kilowatts per square meter (kW/m²). This measurement is a key factor in determining the efficiency and potential of solar panels. A solid understanding of this measurement is crucial as it.

On a clear day, each square metre of the Earth's surface receives approximately 1,000 watts of solar energy, also known as 1 kW/m². This energy can be converted into electricity using solar panels, making it a reliable and sustainable source of power for homes and businesses. However, not all of.

How much electricity does solar power generate per square meter Solar power generation per square meter can produce approximately 150 to 200 watts during peak sunlight hours, 1. Factors like location significantly influence this output, 2. The type of solar panels employed also plays a critical.

Most residential panels in 2025 are rated 250–550 watts, with 400-watt models becoming the new standard. A 400-watt panel can generate roughly 1.6–2.5 kWh of energy per day, depending on local sunlight. To cover the average U.S. household's 900 kWh/month consumption, you typically need 12–18.



The Solar Panel Output Calculator is a highly useful tool so you can understand the total output, production, or power generation from your solar panels per day, month, or year. Input your solar panel system's total size and the peak sun hours specific to your location, this calculator simplifies. How much energy does a square meter of solar panels generate?

On a clear day with high solar irradiance, a square meter of efficient solar panels can generate around 150-250 watt-hours (Wh) of energy in an hour. It translates to approximately 1.5-2.5 kWh per day. Remember that this is a rough estimate and can vary based on factors such as panel efficiency, geographic location, and weather conditions.

How much energy does a solar panel produce a day?

The chart above visualizes the estimated daily solar panel output for the three different locations (A, B, and C), based on the given scenario and calculations. Here's what the chart shows: Location A has an estimated daily output of 0.57 kWh. Location B generates slightly less, with an output of 0.456 kWh.

What factors influence solar energy per square meter?

This article explores solar energy per square meter and the various factors that influence energy output, such as location, climate, and panel efficiency. It provides crucial calculations, compares energy production across regions, and offers strategies to maximize solar energy generation.

Why is solar energy per square meter important?

Measuring solar energy per square meter helps evaluate electricity generation capabilities and is crucial for assessing solar panels' effectiveness and solar farms' ability to harness sunlight and reduce fossil fuel dependence, which contributes to climate change. What is Solar Energy Per Square Meter?



How much electricity can a thousand square meters of solar panels generate

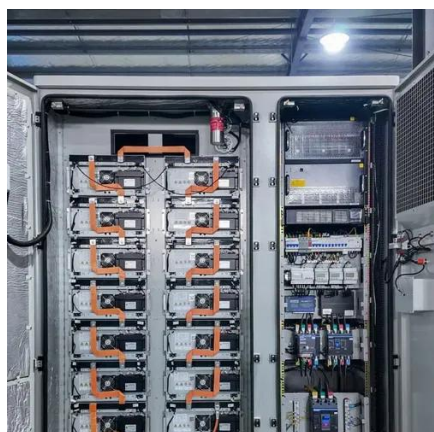


[Solar Power per Square Meter Calculator](#)

Power of Panel (Watt Peak): Solar panels are marked with watt peak (Wp), and this is the amount of output the panels should produce in ideal conditions. Your solar panel will ...

[Solar Panel Output Calculator . Get Maximum ...](#)

Use Solar Panel Output Calculator to find out the total output, production, or power generation from your solar panels per day, month, or ...

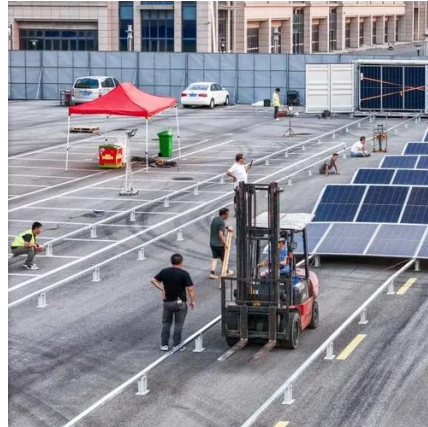


How much electricity does solar power generate per square meter

To understand the impact of these efficiency ratings on electricity generation, consider a typical scenario where a one square meter solar panel is installed in an area that ...

Solar Panel Output Per Square Meter

Discover how much electricity solar panels generate per square meter, explore efficiency factors, technology comparisons, and future innovations in photovoltaic energy.



Solar Energy Generation Per Square Metre: A ...

On a clear day, each square metre of the Earth's surface receives approximately 1,000 watts of solar energy, also known as 1 ...

How much solar power can my roof generate?

In a perfect world, the average roof in the U.S. can ...



How much solar power can my roof generate?

In a perfect world, the average roof in the U.S. can generate around 21,840 kilowatt-hours (kWh) of solar electricity annually--that's more than most homes need. But ...



Watts Per Square Meter Solar Panel

Watts per square meter (W/m^2) is the power density of sunlight falling on a given area of solar panels. In the context of solar panels, it refers to the amount of electrical power a ...



[Solar Power per Square Meter Calculator](#)

Power of Panel (Watt Peak): Solar panels are marked with watt peak (Wp), and this is the amount of output the panels should ...

[How much electricity does solar power generate ...](#)

To understand the impact of these efficiency ratings on electricity generation, consider a typical scenario where a one square ...



[Solar Panel Output Calculator , Get Maximum Power Output](#)

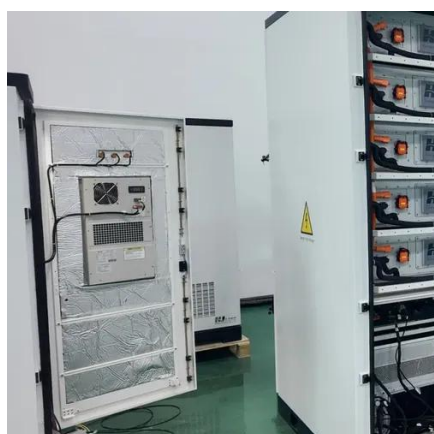
Use Solar Panel Output Calculator to find out the total output, production, or power generation from your solar panels per day, month, or in year.





Solar Energy Generation Per Square Metre: A Complete Guide

On a clear day, each square metre of the Earth's surface receives approximately 1,000 watts of solar energy, also known as 1 kW/m². This energy can be converted into ...



How Much Energy Does A Solar Panel Produce?

Most residential panels in 2025 are rated 250-550 watts, with 400-watt models becoming the new standard. A 400-watt panel can generate roughly 1.6-2.5 kWh of energy ...

PVWatts Calculator

NREL's PVWatts ® Calculator Estimates the energy production of grid-connected photovoltaic (PV) energy systems throughout the world. It allows homeowners, small building owners, ...



Solar Panel Output Per Square Meter

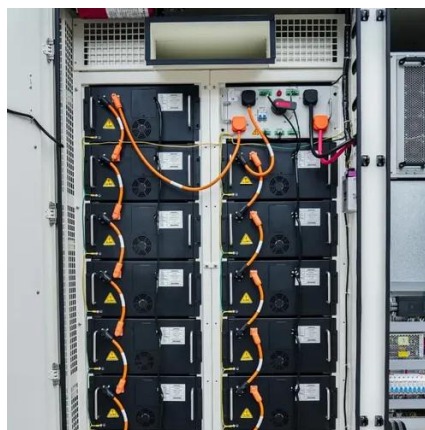
Discover how much electricity solar panels generate per square meter, explore efficiency factors, technology comparisons, and ...





Solar Energy Per Square Meter: How Much Power Can You Get?

This article explores solar energy per square meter and the various factors that influence energy output, such as location, climate, and panel efficiency. It provides crucial ...



How Much Energy Does A Solar Panel Produce?

Most residential panels in 2025 are rated 250-550 watts, with 400-watt models becoming the new standard. A 400-watt panel can ...



Contact Us

For inquiries, pricing, or partnerships:

<https://sccd-sk.eu>

Phone: +32 2 808 71 94

Email: info@sccd-sk.eu

Scan QR code for WhatsApp.

