



How much electricity does a 6000 watt 5G base station consume per hour





Overview

How much power does a 5G base station consume?

That's almost a threefold increase compared to 4G (5). One 5G base station is estimated to consume about as much power as 73 households (6), and 3x as much as the previous generation of base stations (5), (7).

Is 5G more energy efficient than 4G?

Although the absolute value of the power consumption of 5G base stations is increasing, their energy efficiency ratio is much lower than that of 4G stations. In other words, with the same power consumption, the network capacity of 5G will be as dozens of times larger than 4G, so the power consumption per bit is sharply reduced.

How much power will a 5G base station use in 2025?

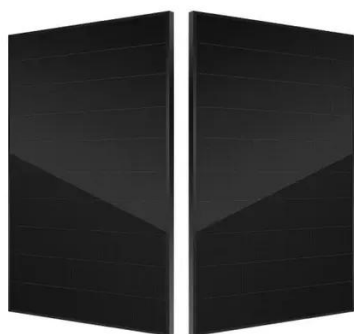
The Small Cell Forum predicts the installed base of small cells to reach 70.2 million in 2025 and the total installed base of 5G or multimode small cells in 2025 to be 13.1 million. "A 5G base station is generally expected to consume roughly three times as much power as a 4G base station.

How much energy does a 5G small cell BS consume?

Simulation results reveal that more than 50% of the energy is consumed by the computation power at 5G small cell BS's. Moreover, the computation power of 5G small cell BS can approach 800 watt when the massive MIMO (e.g., 128 antennas) is deployed to transmit high volume traffic.



How much electricity does a 6000 watt 5G base station consume per hour



How much power does 5G consume?

To understand this, we need to look closer at the base station power consumption characteristics (Figure 3). The model shows that there is significant energy consumption in the ...

[Front Line Data Study about 5G Power Consumption](#)

The power consumption of a single 5G station is 2.5 to 3.5 times higher than that of a single 4G station. The main factor behind this increase in 5G power consumption is the high power ...



What is 5G Energy Consumption?

With 5G projected to increase capacity up to approximately 1000-fold and high frequency millimeter wave (mmWave) transmission driving exponentially higher cell density, this ...

How much power does 5G consume?

One 5G base station is estimated to consume about as much power as 73 households (6), and 3x as much as the previous generation of base stations (5), (7). When base stations, data centers



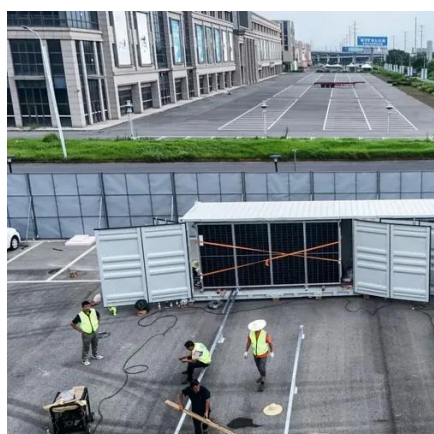
...



Front Line Data Study about 5G Power ...

The power consumption of a single 5G station is 2.5 to 3.5 times higher than that of a single 4G station. The main factor behind this increase in 5G

...



Power Consumption: 5G Basestations Are Hungry, Hungry Hippos

The increased power consumption of next-generation basestations may be one of the dirty little secrets of 5G, which might not be a secret much longer as operators roll out ...



How Much Power Does 5G Base Station Consume? , Huijue ...

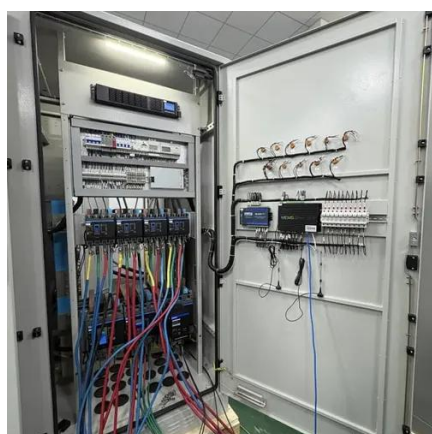
Have you ever wondered how much energy our hyper-connected world is consuming? 5G base stations, the backbone of next-gen connectivity, now draw 3-4 times ...





5G masts estimated to consume about as much power as 73 ...

To achieve gigabit speeds, the plan with 5G is to have it operate at very high frequencies of 24-26 Gigahertz. For this reason, 5G requires millions of new so-called "small cells," for example, ...



Why does 5g base station consume so much power and how to ...

Huawei and ZTE's 5G base stations have a 100% load power consumption of 3852.5W and 3674.85W, respectively, while ZTE's 4G base station has a power consumption ...

5G masts estimated to consume about as much ...

To achieve gigabit speeds, the plan with 5G is to have it operate at very high frequencies of 24-26 Gigahertz. For this reason, 5G requires millions of ...



Why does 5g base station consume so much ...

Huawei and ZTE's 5G base stations have a 100% load power consumption of 3852.5W and 3674.85W, respectively, while ZTE's 4G ...



Modelling the 5G Energy Consumption Using Real-world ...

To address this, we propose a novel deep learning model for 5G base station energy consumption estimation based on a real-world dataset. Unlike existing methods, our approach integrates ...



A technical look at 5G energy consumption and performance

To understand this, we need to look closer at the base station power consumption characteristics (Figure 3). The model shows that there is significant energy consumption in the ...



Energy Consumption of 5G, Wireless Systems and the Digital ...

Here we develop a large-scale data-driven framework to quantitatively assess the carbon emissions of 5G mobile networks in China, where over 60% of the global 5G base stations are ...



Energy Consumption of 5G, Wireless Systems and ...

Here we develop a large-scale data-driven framework to quantitatively assess the carbon emissions of 5G mobile networks in China, where over ...





Contact Us

For inquiries, pricing, or partnerships:

<https://sccd-sk.eu>

Phone: +32 2 808 71 94

Email: info@sccd-sk.eu

Scan QR code for WhatsApp.

