



# How much electricity does the Hargeisa 5G base station consume





## Overview

---

How much power does a 5G station use?

The power consumption of a single 5G station is 2.5 to 3.5 times higher than that of a single 4G station. The main factor behind this increase in 5G power consumption is the high power usage of the active antenna unit (AAU). Under a full workload, a single station uses nearly 3700W.

Why does 5G use more power than 4G?

The data here all comes from operators on the front lines, and we can draw the following valuable conclusions: The power consumption of a single 5G station is 2.5 to 3.5 times higher than that of a single 4G station. The main factor behind this increase in 5G power consumption is the high power usage of the active antenna unit (AAU).

What is a 5G base station?

A 5G base station is mainly composed of the baseband unit (BBU) and the AAU — in 4G terms, the AAU is the remote radio unit (RRU) plus antenna. The role of the BBU is to handle baseband digital signal processing, while the AAU converts the baseband digital signal into an analog signal, and then modulates it into a high-frequency radio signal.

Why is low 5G energy consumption important?

With new devices and use cases increasing the capacity of the networks, the demand to ensure low 5G energy consumption is critical to minimizing operator expenses and ensuring they can still meet energy reduction goals. How can NR bring an answer?

Figure 1: Global mobile data traffic outlook [Ericsson Mobility Report, June 2019].



## How much electricity does the Hargeisa 5G base station consume

---



### [A technical look at 5G energy consumption and performance](#)

To understand this, we need to look closer at the base station power consumption characteristics (Figure 3). The model shows that there is significant energy consumption in the ...

### [Power consumption based on 5G communication](#)

Abstract: At present, 5G mobile traffic base stations in energy consumption accounted for 60% ~ 80%, compared with 4G energy consumption increased three times. In the future, high-density ...



### [Power Consumption: 5G Basestations Are Hungry, Hungry Hippos](#)

The increased power consumption of next-generation basestations may be one of the dirty little secrets of 5G, which might not be a secret much longer as operators roll out ...

### [Front Line Data Study about 5G Power Consumption](#)

The power consumption of a single 5G station is 2.5 to 3.5 times higher than that of a single 4G station. The main factor behind this increase in 5G



power consumption is the high power ...

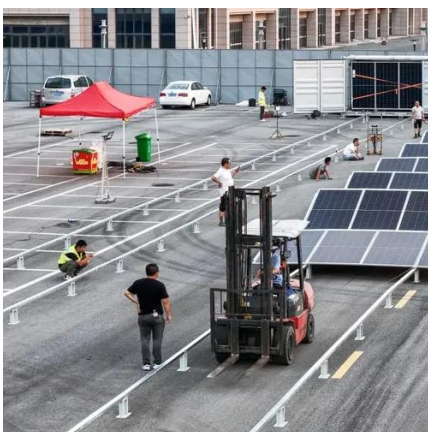


### How Much Power Does 5G Base Station Consume?

Have you ever wondered how much energy our hyper-connected world is consuming? 5G base stations, the backbone of next-gen connectivity, now draw 3-4 times ...

### **What is 5G Energy Consumption?**

With 5G projected to increase capacity up to approximately 1000-fold and high frequency millimeter wave (mmWave) transmission driving exponentially higher cell density, this ...



### A technical look at 5G energy consumption and performance

Base Station Power Consumption  
Energy Saving Features of 5G New Radio  
How Much Energy Can We Save with Nr Sleep Modes?  
Impact on Energy Efficiency and Performance in A Super Dense Urban Scenario  
Further Reading  
The 5G NR standard has been designed based on the knowledge of the typical traffic activity in radio networks as well as the need to support sleep states in radio network equipment. By putting the



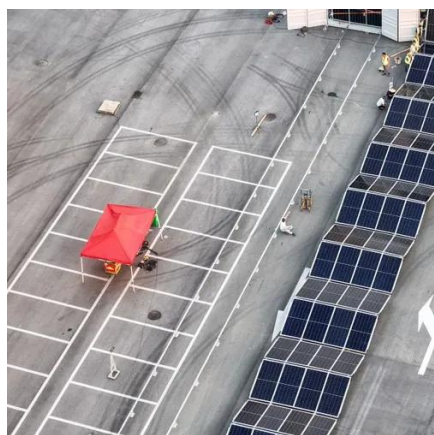
base station into a sleep state when there is no traffic to serve i.e. switching off hardware components, it will consume less energy. The more component See more on ericsson IEEE Xplore

## Power consumption based on 5G communication - IEEE Xplore

Abstract: At present, 5G mobile traffic base stations in energy consumption accounted for 60% ~ 80%, compared with 4G energy consumption increased three times. In the future, high-density ...

### Front Line Data Study about 5G Power ...

The power consumption of a single 5G station is 2.5 to 3.5 times higher than that of a single 4G station. The main factor behind this increase in 5G ...

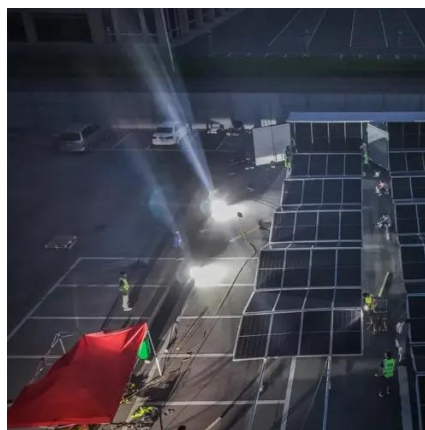


## How much power does 5G consume?

When base stations, data centers and devices are added together, telecommunications will consume more than 20% of the world's electricity ...

## Why does 5g base station consume so much power and how to ...

In addition to other small modules that use electricity, the power consumption of a single 5G base station is generally around 3700 watts, which is about three times that of 4G ...



## Analysis of power consumption composition of 5g base stations

This paper conducts a literature survey of relevant power consumption models for 5G cellular network base stations and provides a comparison of the models. It highlights ...

## Base Station Energy Consumption Analysis , Huijue Group E-Site

Did you know a single 5G base station consumes up to 3.7kW - 68% more than its 4G predecessor? As global mobile data traffic surges 35% annually, base station energy ...



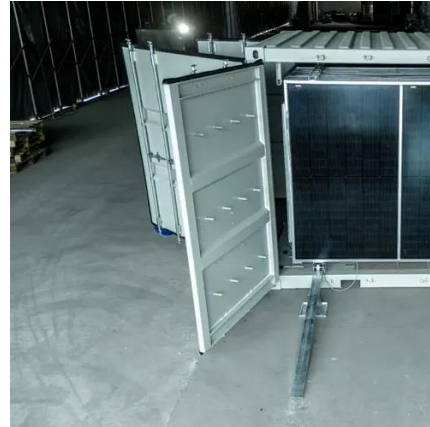
## Why does 5g base station consume so much ...

In addition to other small modules that use electricity, the power consumption of a single 5G base station is generally around 3700 watts, ...



## How much power does 5G consume?

When base stations, data centers and devices are added together, telecommunications will consume more than 20% of the world's electricity by 2025, says Huawei analyst Dr. Anders ...





## Contact Us

---

For inquiries, pricing, or partnerships:

<https://sccd-sk.eu>

Phone: +32 2 808 71 94

Email: [info@sccd-sk.eu](mailto:info@sccd-sk.eu)

Scan QR code for WhatsApp.

