



# How much is the hybrid power supply of Majuro Communication Green Base Station





## Overview

---

The main loads of those small base station are 48V with rated 500W power more or less, the daily power consumption is about 12kwh.

The main loads of those small base station are 48V with rated 500W power more or less, the daily power consumption is about 12kwh.

RELATED 12V/24V/36V/48V MPPT Solar Charge Controller PRODUCTS To comprehensively summarize the achievements of 2024 and clarify the direction for 2025, to inspire unity and combat effectiveness among our team, Ipandee grandly convened the 2024 Annual Summary and. Under the background of "double.

The new energy communication base station supply system is mainly used for those small base station situated at remote area without grid. The main loads of those small base station are 48V with rated 500W power more or less, the daily power consumption is about 12kwh. Here we adopt 5kW wind turbine.

Detailed introduction HJ-SG-R01 series communication container station is a modular large-scale outdoor base station specially designed to meet the needs of large-capacity and high . Energy Cooperation in Cellular Networks with . May 28, 2013 · I. INTRODUCTION turbines, to supplement.

Stable and reliable: the power module adopts isolated circuit design scheme; Intelligent collaboration: support turnkey monitoring of PV modules, rectifier modules and DCDC modules; High efficiency: PV modules support MPPT function, conversion efficiency is more than 96%; Wide voltage input for PV.

HJ-intelligent hybrid power system is used for communication base station equipment, which can integrate photovoltaic modules, wind power generation modules, rectifier modules, inverter modules, power distribution units, monitoring unit equipment, and can provide stable DC and AC power supply.

As 5G deployments accelerate globally, base station hybrid power supply systems are becoming the linchpin for reliable connectivity. Did you know that telecom operators lose \$12 billion annually due to power-related outages?

The real question isn't whether we need hybrid solutions, but rather how.



## How much is the hybrid power supply of Majuro Communication Green

---

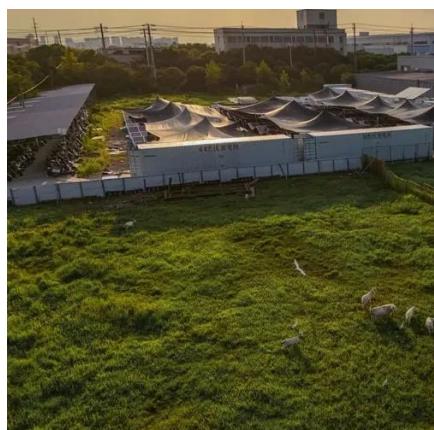


### [Communication Base Station Smart Hybrid PV Power Supply ...](#)

The Ipandee hybrid PV Direct Current (DC) Power Supply System is a green energy power supply solution specifically designed for communication operators to save energy, reduce carbon ...

### **HJ 5G Base Station Hybrid Power Supply with Monocrystalline ...**

The unified power platform system supports AC and DC input and output, meets the introduction and output of different power supply codes, and can solve the problem of difficult introduction ...



### **Intelligent hybrid power system**

The hybrid power supply has the characteristics of wide voltage input, high-efficiency modules, support for mixed insertion, and centralized monitoring with multiple interfaces of RS485 and ...

### [Communication Base Station Smart Hybrid PV Power Supply ...](#)

The BX48D3000 PV DC-DC module can be used alone, but also as a module for wind, light, oil, and mixed power hybrid power supply system. The



module has the advantages of high ...



## National communication green base station hybrid power supply

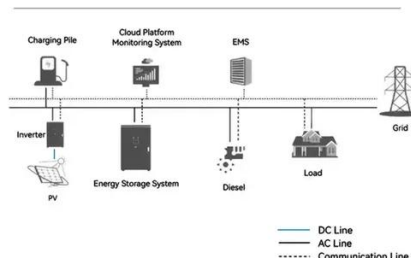
The Ipandee hybrid PV Direct Current (DC) Power Supply System is a green energy power supply solution specifically designed for communication operators to save energy, reduce carbon



## Communication Station Power Supply Wind ...

The new energy communication base station supply ...

### System Topology



## Wireless Telecom Base Site Solutions , Hybrid Power

It is an intelligent hybrid power base station cabinet that integrates the photovoltaic, wind turbine, and battery storage to provide reliable power to remote or off-grid areas with advanced ...

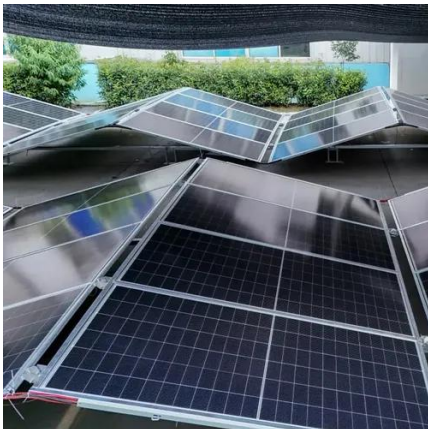






## Base Station Solar Storage Integrated System Solution

Stable and reliable: the power module adopts isolated circuit design scheme; Intelligent collaboration: support turnkey monitoring of PV modules, rectifier modules and ...

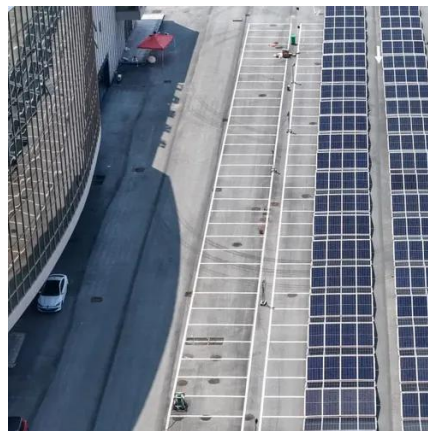


## Base Station Hybrid Power Supply: The Future of Sustainable

Traditional power architectures struggle with three core challenges: Recent GSMA data reveals hybrid systems could slash these costs by up to 65% - if properly implemented. ...

## Wireless Telecom Base Site Solutions , Hybrid Power

It is an intelligent hybrid power base station cabinet that integrates the photovoltaic, wind turbine, and battery storage to provide reliable power ...



## Wind-solar hybrid for outdoor communication base stations

Integrated Solar-Wind Power Container for Communications This large-capacity, modular outdoor base station seamlessly integrates photovoltaic, wind power, and energy storage to provide a ...





## Communication Station Power Supply Wind Turbine Solar Hybrid ...

The new energy communication base station supply system is mainly used for those small base station situated at remote area without grid. The main loads of those small base station are ...





## Contact Us

---

For inquiries, pricing, or partnerships:

<https://sccd-sk.eu>

Phone: +32 2 808 71 94

Email: [info@sccd-sk.eu](mailto:info@sccd-sk.eu)

Scan QR code for WhatsApp.

