



# How much power can a 12v to 220v inverter carry





## Overview

---

So from a 12V 30A battery with a 12V to 220V power inverter, we get as maximum power 220V and 1.63A of power. It will not exceed this current draw because a power inverter can only output the amount of power input. If you want a higher current draw .

So from a 12V 30A battery with a 12V to 220V power inverter, we get as maximum power 220V and 1.63A of power. It will not exceed this current draw because a power inverter can only output the amount of power input. If you want a higher current draw .

Therefore, we get a 12V to 220V power inverter. Taking the output voltage and dividing it by the input voltage, we get 18.33 (220V/12V). Therefore, current will be decreased by a factor of 18.33. Since the current capacity of the battery is rated for 30A, the maximum current we can get at the.

Finding a reliable power inverter that converts 12V DC from your vehicle or off-grid setup into 110V-220V AC can keep your devices charged and ready. This guide highlights five top options with different wattage ranges, including pure sine wave models for sensitive electronics. Each selected.

Power inverters convert DC power from a 12V battery source into usable AC power at 220V, making them essential for cars, RVs, and off-grid applications. This article reviews five top 12V to 220V power inverters featuring various power capacities, safety protections, and smart features suitable for.

Finding a reliable 12 volt to 220 volt inverter is essential for converting DC power from batteries into steady AC power for various applications. Whether for home backup, RV trips, camping, or solar energy systems, the right inverter ensures safe, efficient power delivery to your electronics.

Whether you are camping in the great outdoors or need backup power at home, an inverter 12V to 220V can be a game-changer. This guide aims to provide you with a comprehensive understanding of how to choose the right inverter for your specific needs. An inverter 12V to 220V is a device that converts.

Standard 12v models top out around 3000w (24v/48v ~ 4000w). To proceed:



Upgrade to a higher-voltage system (24 V/48 V) for a larger inverter. Consider a higher-voltage system for a bigger inverter. Pick your appliances. Use the dropdown to add common devices—or enter your own custom items. Minimum.



## How much power can a 12v to 220v inverter carry

---



### **Pure Sine Wave Inverter 12V to 220V 3000W-6000W Peak Power ...**

This pure sine wave inverter is a current converter that converts 12V/24V/48V/60V DC to 220V AC. The output power can be used for a variety of devices, making it the ultimate car charger ...

### 12V-220V/230V Battery Inverter , 3000 Watt Pure Sine Wave

POWERFUL DC-AC: 3000W continuous, 6000W peak surge during load start-up, 12V DC to 220V / 230V AC pure sine wave with conversion efficiency >92%, lowers conversion loss.



### What is the size of an Inverter 220V TO 12V?

When it comes to choosing the right size of a 220V to 12V inverter, you need to consider the power requirements of the devices you want to run. First, ...



## **Best 12V to 220V Power Inverters for Cars, Homes, and Camping**

This article reviews five top 12V to 220V power inverters featuring various power capacities, safety protections, and smart features suitable for



different needs.



## How to Calculate the Maximum Output Power of a Power Inverter

In this article, we go over how to calculate the maximum output power of a power inverter from the DC battery supplying it.



## What is the size of an Inverter 220V TO 12V?

When it comes to choosing the right size of a 220V to 12V inverter, you need to consider the power requirements of the devices you want to run. First, make a list of all the 12V devices you ...



## 12V-220V/230V Battery Inverter , 3000 Watt Pure Sine Wave

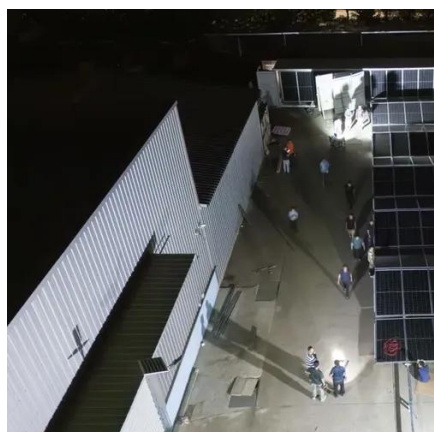
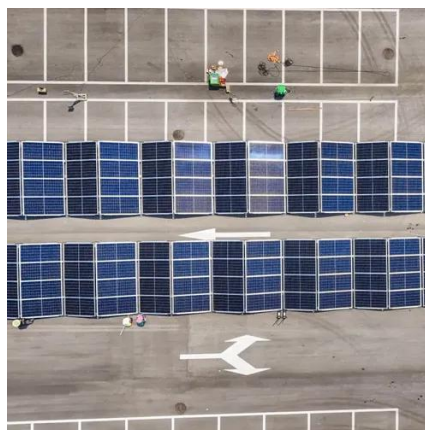
POWERFUL DC-AC: 3000W continuous, 6000W peak surge ...





## Best 12 Volt to 220 Volt Pure Sine Wave Inverters for Home and ...

This Pure Sine Wave Inverter by Jintaoma offers robust power conversion from 12V DC to 220V AC with continuous power ratings around 3000W and surge power up to 6000W.

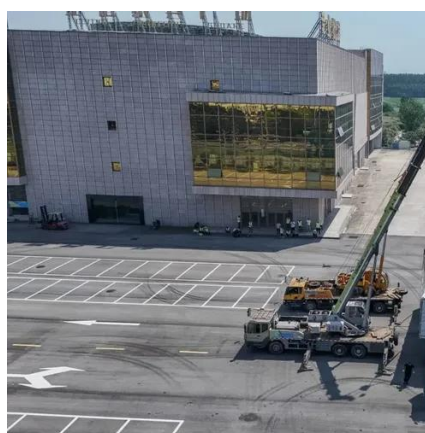


## Inverter Capacity Calculator

Enter the power requirement of each device and the number of each type of device into the calculator to determine the inverter capacity.

## [Inverter Size Calculator , Find Your Perfect Power Match](#)

The inverter size calculator takes the guesswork out of choosing the right inverter. Simply select your appliances below, and you'll instantly see the inverter size you need.



## [Best 12V to 220V Power Inverters for Cars, ...](#)

This article reviews five top 12V to 220V power inverters featuring various power capacities, safety protections, and smart features ...





### Pure Sine Wave Inverter 12V to 220V 3000W ...

This pure sine wave inverter is a current converter that converts 12V/24V/48V/60V DC to 220V AC. The output power can be used for a ...



### Best 12 Volt to 220 Volt Pure Sine Wave Inverters ...

This Pure Sine Wave Inverter by Jintaoma offers robust power conversion from 12V DC to 220V AC with continuous power ratings ...

### Best Power Inverters 12V to 220V for Cars, RVs ...

Finding a reliable power inverter that converts 12V DC from your vehicle or off-grid setup into 110V-220V AC can keep your devices ...



### **The Essential Guide to Choosing a 12V to 220V Inverter for Your ...**

**Power Rating:** The power rating, measured in watts, indicates how much load the inverter can handle. It is crucial to choose an inverter that can support the total wattage of the ...



## [Best Power Inverters 12V to 220V for Cars, RVs and Homes](#)

Finding a reliable power inverter that converts 12V DC from your vehicle or off-grid setup into 110V-220V AC can keep your devices charged and ready. This guide highlights five ...







## Contact Us

---

For inquiries, pricing, or partnerships:

<https://sccd-sk.eu>

Phone: +32 2 808 71 94

Email: [info@sccd-sk.eu](mailto:info@sccd-sk.eu)

Scan QR code for WhatsApp.

