



How much power does a 550W solar panel produce





Overview

A 550W solar panel generates 1.8-2.5kWh daily (4.5 peak sun hours), varying by location tilt (20°-35° optimal), with 85% system efficiency accounting for inverter losses, shading, and temperature derating above 25°C (0.5% power drop per °C).

A 550W solar panel generates 1.8-2.5kWh daily (4.5 peak sun hours), varying by location tilt (20°-35° optimal), with 85% system efficiency accounting for inverter losses, shading, and temperature derating above 25°C (0.5% power drop per °C).

A 550 watt solar panel is a significant investment, and understanding its power output is crucial for anyone considering solar energy. This article will explain how much power a 550 watt solar panel produces, why this matters, and who should care. What Does a 550 Watt Solar Panel Produce?

A 550.

A 550W solar panel generates 1.8-2.5kWh daily (4.5 peak sun hours), varying by location tilt (20°-35° optimal), with 85% system efficiency accounting for inverter losses, shading, and temperature derating above 25°C (0.5% power drop per °C). A 550W solar panel is a high-efficiency photovoltaic.

How many watts does a 550 solar panel have?

To answer the query, a 550-watt solar panel is designed to produce 550 watts of power under ideal conditions, specifically under full sunlight, and various factors can affect actual output such as shading, temperature, and orientation. The actual energy.

Does your 200-watt solar panel actually produce 100 watts of power?

Bring your calculator and notepad, we're going to do some maths! Solar panels have gone a long way from a novelty to a reliable source of clean electricity for homes and businesses. And yet buyers keep asking: How much energy does.

When evaluating the daily energy output of a 550W solar panel, the first thing to understand is that its performance depends on variables like sunlight hours, geographic location, and system efficiency. Let's break down the numbers with



real-world examples. A 550W panel operating at peak capacity.

Solar panels degrade slowly, losing about 0.5% output per year, and often last 25–30 years or more. Most residential panels in 2025 are rated 250–550 watts, with 400-watt models becoming the new standard. A 400-watt panel can generate roughly 1.6–2.5 kWh of energy per day, depending on local.



How much power does a 550W solar panel produce



How many watts does a 550 solar panel have?

To answer the query, a 550-watt solar panel is designed to produce 550 watts of power under ideal conditions, specifically under full ...

How Much Energy Does A Solar Panel Produce?

If you're thinking about going solar, one of your biggest questions is likely: how much electricity can a solar panel actually ...



How many watts does a 550 solar panel have? , NenPower

To answer the query, a 550-watt solar panel is designed to produce 550 watts of power under ideal conditions, specifically under full sunlight, and various factors can affect ...



How Much Energy Does A Solar Panel Produce?

If you're thinking about going solar, one of your biggest questions is likely: how much electricity can a solar panel actually produce? This in-depth



guide breaks down the ...

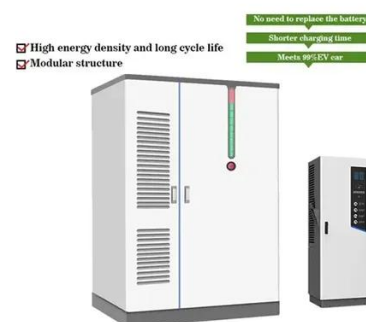


How Much Energy Does A Solar Panel Produce?

Most solar panels have cells that can convert 17-23% of the sunlight that hits them into usable solar energy.

How Much Power Does A Solar Panel Produce? » Power Output

If the sunlight and temperature conditions remain thorough throughout the year, then that solar panel could produce nearly 550-kilowatt hours in a year. What can be powered ...



How Much Energy Does A Solar Panel Produce?

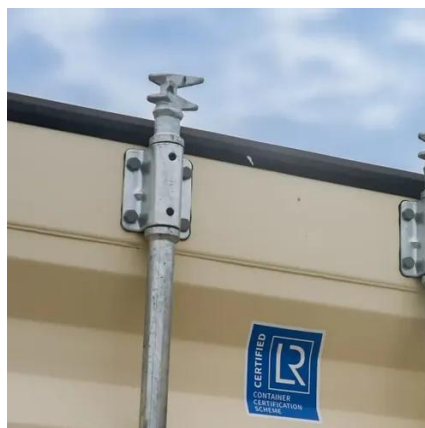
Most solar panels you can find today are rated between 250 and 550 watts of power. The wattage (W) is what solar manufacturers and installers put first in the product ...





How Many kWh Does A Solar Panel Produce Per ...

For 1 kWh per day, you would need about a 300-watt solar panel. For 10kW per day, you would need about a 3kW solar system. If we know both the ...

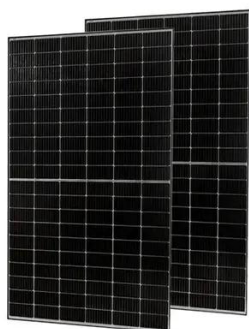


How much energy does a 550w solar panel produce per day

Commercial installations using 550W bifacial panels in open fields can achieve 8-12% higher yields through rear-side illumination on reflective surfaces. Dust accumulation can reduce ...

How many kWh does a 550W solar panel produce

A 550W solar panel generates 1.8-2.5kWh daily (4.5 peak sun hours), varying by location tilt (20°-35° optimal), with 85% system ...



How Much Energy Does A Solar Panel Produce?

Material/Panel TypePower RatingEfficiencyLatitude of The LocationPlacement AngleShadowWeather/Climate of The LocationDust AccumulationTemperatureTime of YearThe conversion efficiency of a solar panel tells you what percentage of solar energy it can convert into usable electricity. Higher efficiency means a higher energy output, but also that the solar panel can put out more power per square foot. See more



on greencitizen Email: info@greencitizen
Published: Feb 24, 2023

Searches you might like

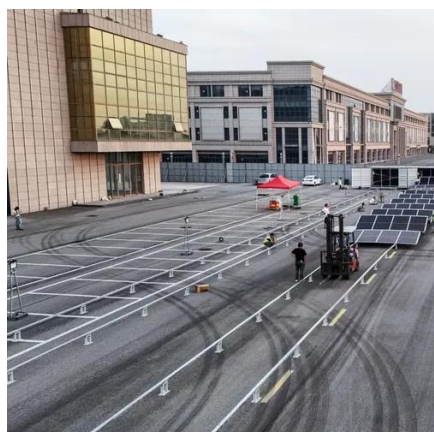
550 watt solar panelhow many watts does a solar panel producehow much electricity does solar panel producesolar panel wattageutterwonder

How much energy does a 550w solar panel produce per day

Commercial installations using 550W bifacial panels in open fields can achieve 8-12% higher yields through rear-side illumination on reflective surfaces. Dust accumulation can reduce ...

[How many kWh does a 550W solar panel produce](#)

A 550W solar panel generates 1.8-2.5kWh daily (4.5 peak sun hours), varying by location tilt (20°-35° optimal), with 85% system efficiency accounting for inverter losses, ...



[How Many kWh Does A Solar Panel Produce Per Day?](#)

For 1 kWh per day, you would need about a 300-watt solar panel. For 10kW per day, you would need about a 3kW solar system. If we know both the solar panel size and peak sun hours at ...

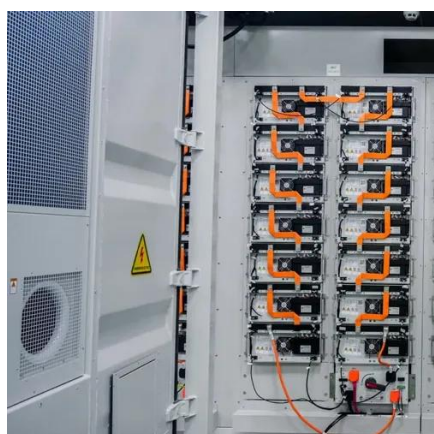
[How Much Power Does A Solar Panel Produce? » Power Output](#)

If the sunlight and temperature conditions remain thorough throughout the year, then that solar panel could ...



[How Much Power Does a 550 Watt Solar Panel Generate?](#)

On average, a 550 watt solar panel can produce between 2.2 to 3.3 kilowatt-hours (kWh) of electricity per day, depending on the number of peak sunlight hours and local ...



[How Much Energy Does A Solar Panel Produce? , EnergySage](#)

Most solar panels have cells that can convert 17-23% of the sunlight that hits them into usable solar energy.



[How Much Power Can A 550W Solar Panel Produce?](#)

A 550W solar panel is capable of generating up to 550 watts of electricity under ideal conditions. However, the amount of power a solar panel can generate depends on ...





Contact Us

For inquiries, pricing, or partnerships:

<https://sccd-sk.eu>

Phone: +32 2 808 71 94

Email: info@sccd-sk.eu

Scan QR code for WhatsApp.

