



# How much solar energy does a mobile base station need





## Overview

---

The typical cost of a solar base station can range from \$10,000 to over \$300,000, based on various design, capacity, and component quality factors.

The typical cost of a solar base station can range from \$10,000 to over \$300,000, based on various design, capacity, and component quality factors.

Abstract: The rapid growth of mobile communication technology and the corresponding significant increase in the number of cellular base stations (BSs) have increased operational expenses (OPEX) for mobile operators, due to increased electricity prices and fossil fuel consumption. Thus, identifying.

An off-grid solar system's size depends on factors such as your daily energy consumption, local sunlight availability, chosen equipment, the appliances that you're trying to run, and system configuration. Below is a combination of multiple calculators that consider these variables and allow you to.

The rapid growth of mobile communication technology and the corresponding significant increase in the number of cellular base stations (BSs) have increased operational expenses (OPEX) for mobile operators, due to increased electricity prices and fossil fuel consumption. Thus, identifying.

Estimates the energy production of grid-connected photovoltaic (PV) energy systems throughout the world. It allows homeowners, small building owners, installers and manufacturers to easily develop estimates of the performance of potential PV installations. Operated by the Alliance for Sustainable.

The cost of a solar base station varies significantly depending on several factors. 1. The size and capacity of the system, 2. Quality of components, 3. Installation and labor costs, 4. Geographic location, and 5. Government incentives and financing options play crucial roles in determining the.

As Mobile Network Operators strive to increase their subscriber base, they need to address the "Bottom of the Pyramid" segment of the market and extend their footprint to very remote places in a cost-effective way. Recent technological progress in low consumption base stations and satellite systems. What is a PV energy estimate?



Estimates the energy production and cost of energy of grid-connected photovoltaic (PV) energy systems throughout the world. It allows homeowners, small building owners, installers and manufacturers to easily develop estimates of the performance of potential PV installations.

How much solar power do I need to run my Starlink?

To calculate how much solar power you need to run your Starlink, you must first know how much energy your particular model consumes. For instance, the Mini only consumes about 40W during active use, while high-performance models could consume 150W.

Can a portable power station run a Starlink?

Since portable power stations come in a wide range of capacities, they can easily run any Starlink model for short or long periods, depending on your model. For off-grid solutions, just recharge it using solar panels, and you can stay connected anytime from anywhere for as long as you need it.

What components do I need for an off-grid Solar System?

Below is a combination of multiple calculators that consider these variables and allow you to size the essential components for your off-grid solar system: The solar array. The battery bank. The solar charge controller. The power inverter. Simply follow the steps and instructions provided below.



## How much solar energy does a mobile base station need



### [The Complete Off Grid Solar System Sizing Calculator](#)

Using your daily energy usage and Peak Sun Hours, and assuming a system efficiency of 70%, the calculator estimates the Wattage required for your off-grid solar system's ...

### [The Complete Off Grid Solar System Sizing ...](#)

Using your daily energy usage and Peak Sun Hours, and assuming a system efficiency of 70%, the calculator estimates the ...

- LiFePO<sub>4</sub>
- Wide temp: -20°C to 55°C
- Easy to expand
- Floor mount&wall mount
- Intelligent BMS
- Cycle Life:≥6000
- Warranty :10 years



### **PVWatts Calculator**

Estimates the energy production and cost of energy of grid-connected photovoltaic (PV) energy systems throughout the world. It allows homeowners, small building owners, installers and ...

### **Low cost solar base station**

Recent technological progress in low consumption base stations and satellite systems allow them to use solar energy as the only source of power ...



## Low cost solar base station

Recent technological progress in low consumption base stations and satellite systems allow them to use solar energy as the only source of power supply, and to minimize satellite backhaul costs.



## [Starlink Power Supply: What Size Power Station to ...](#)

Learn about power usage for different Starlink models and how to calculate what size power station you would need for an uninterrupted ...



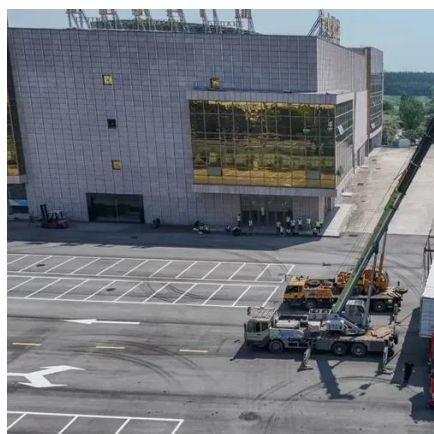
## Optimal sizing of photovoltaic-wind-diesel-battery power supply ...

In this paper, standalone hybrid renewable energy system for powering an indoor mobile telephony base station is simulated using the Monte Carlo simulation, and optimized ...



## New York State Solar Guidebook

When deciding to lease land for solar, landowners have many factors to consider before committing.



### [How much does a solar base station cost? - NenPower](#)

The financial commitment associated with solar base stations encompasses a variety of factors. These include design specifications, component quality, installation and ...

### [Site Energy Revolution: How Solar Energy ...](#)

Let's explore how solar energy is reshaping the way we power our communication networks and how it can make these stations ...



### [Comparative Analysis of Solar-Powered Base Stations for Green ...](#)

Thus, cost effectiveness, efficiency, sustainability, and reliability, which are key features of power source requirements for BSs, can be achieved via the exploitation of ...



## Comparative Analysis of Solar-Powered Base Stations for Green Mobile

Thus, cost effectiveness, efficiency, sustainability, and reliability, which are key features of power source requirements for BSs, can be achieved via the exploitation of ...



Test certification  
CE FC U



## [Site Energy Revolution: How Solar Energy Systems Reshape ...](#)

Let's explore how solar energy is reshaping the way we power our communication networks and how it can make these stations greener, smarter, and more self-sufficient.

## Starlink Power Supply: What Size Power Station to Run Starlink?

Learn about power usage for different Starlink models and how to calculate what size power station you would need for an uninterrupted internet connection.



## [Comparative Analysis of Solar-Powered Base Stations for ...](#)

This paper examines solar energy solutions for different generations of mobile communications by conducting a comparative analysis of solar-powered BSs based on three aspects: architecture, ...



## Contact Us

---

For inquiries, pricing, or partnerships:

<https://sccd-sk.eu>

Phone: +32 2 808 71 94

Email: [info@sccd-sk.eu](mailto:info@sccd-sk.eu)

Scan QR code for WhatsApp.

