

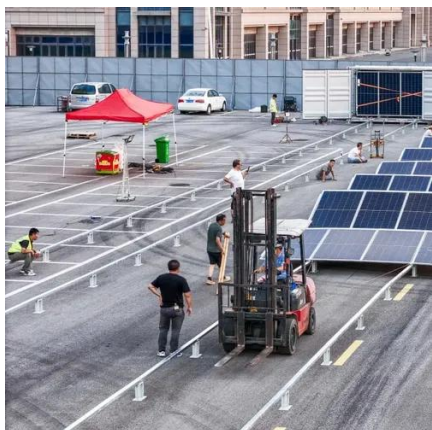


How much voltage can a 12v inverter invert





How much voltage can a 12v inverter invert



12V vs 24V vs 48V Inverter: How to Choose the Right System for ...

The answer depends on your power needs, battery bank, and system design. In this guide, we'll break down the differences between 12V, 24V, and 48V systems, covering ...

What Is A 12V Inverter And Where Is It Used?

Technically, inverters use high-frequency switching (15-50kHz) to chop DC into AC. For example, a 12V 1000W inverter draws ~83A ($1000W \div 12V$) at full load--undersized wiring here causes ...



Inverters Guide

Power inverters, or simply 'inverters', are transformers that will convert a DC current into an AC current, allowing you to run higher ...

Inverters Guide

Power inverters, or simply 'inverters', are transformers that will convert a DC current into an AC current, allowing you to run higher voltage equipment from a battery or ...



[Frequently Asked Questions about Inverters](#)

As a rule of thumb you should divide the connected capacity by 10 for 12 volt and by 20 for 24 volt. This also includes all the power losses in the cables, fuses and the inverter. Is there a ...

[Inverter Size Calculator , Find Your Perfect Power Match](#)

Standard 12v models top out around 3000w (24v/48v ~ 4000w). To proceed: Upgrade to a higher-voltage system (24 V/48 V) for a larger inverter. Consider a higher ...



[Frequently Asked Questions about Inverters](#)

Yes, a single 12-volt battery can run a 1000-watt inverter, but the runtime depends on several factors such as the battery's capacity, the inverter's efficiency, and the load demand.





Inverter Battery Voltage: How Many Volts Are Needed For ...

A common choice for residential use is the 12-volt system, which can power small devices and appliances easily. However, larger systems and those designed for higher power ...



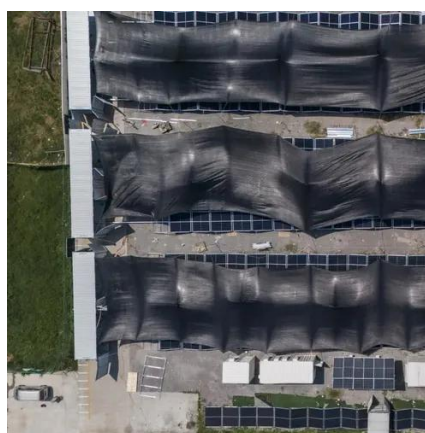
Understanding inverter voltage

For a 12V inverter, the maximum input inverter voltage is typically around 16VDC. This safety margin provides a buffer to ...



12 Volt DC Power Inverter: In-Depth Learning and ...

A 12V DC power inverter is a device that converts low-voltage direct current (DC) power from a 12V battery (such as a car battery or ...



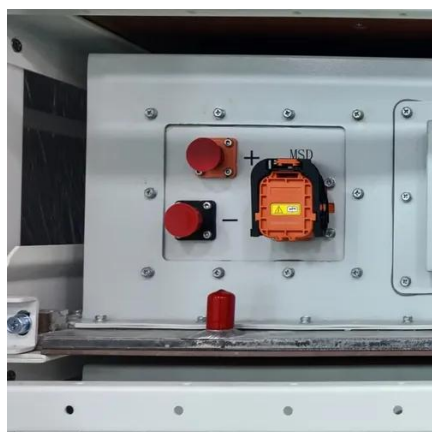
12 Volt DC Power Inverter: In-Depth Learning and Buying Guide

A 12V DC power inverter is a device that converts low-voltage direct current (DC) power from a 12V battery (such as a car battery or deep-cycle battery) into 120V alternating ...



Can One 12 Volt Battery Run a 1000 Watt Inverter?

Yes, a single 12-volt battery can run a 1000-watt inverter, but the runtime depends on several factors such as the battery's capacity, the inverter's efficiency, and the load demand.

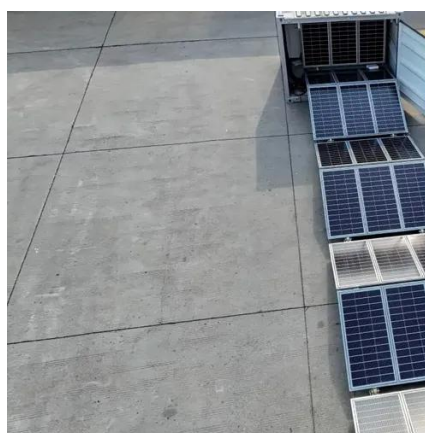


Determining Power Inverter Sizing , Go Power Education

Inverters, in particular, are rated in watts, and almost all electrical appliances have a corresponding rating. Use our Inverter Calculator Tool to help choose the right Go Power!

Determining Power Inverter Sizing , Go Power ...

Inverters, in particular, are rated in watts, and almost all electrical appliances have a corresponding rating. Use our Inverter Calculator Tool to help ...



Understanding inverter voltage

For a 12V inverter, the maximum input inverter voltage is typically around 16VDC. This safety margin provides a buffer to accommodate fluctuations in the power source and ...



Contact Us

For inquiries, pricing, or partnerships:

<https://sccd-sk.eu>

Phone: +32 2 808 71 94

Email: info@sccd-sk.eu

Scan QR code for WhatsApp.

