



How much wind power does Berlin solar container communication station have





Overview

At this ratio, the maximum wind-solar integration capacity reaches 3938.63 MW, with a curtailment rate of wind and solar power kept below 3 % and a loss of load probability maintained at 0 %.

At this ratio, the maximum wind-solar integration capacity reaches 3938.63 MW, with a curtailment rate of wind and solar power kept below 3 % and a loss of load probability maintained at 0 %.

Solar container communication wind power construction transition towards renewables is central to net-zero emissions. However, building a global power system dominated by solar and wind energy presents immense challenges. Here, we demonstrate the potential of a globally interconnected solar-wind.

solar-wind system to meet future electricity sources on Earth vastly surpasses human demand [33, 34]. In our pursuit of a globally interconnected solar-wind system, we have focused solely on the potentials that are exploitable, accessible, and interconnectable (see "Methods").

In densely populated regions such as western Europe, India, eastern China, and western United States, most grid-boxes contain solar and wind resources apt for interconnection (Supplementary Fig. S1). Nevertheless, these regions exhibit modest power generation potential, typically not exceeding 1.0.

The study confirms that Berlin has a potential solar power share of 25 %, provided that better framework conditions are put in place at federal level, creative approaches are taken on site and a variety of instruments is applied (Masterplan Solarcity, only in German). Based on this, the Senate.

A few weeks ago is the announcement of Solar Farm inaugurated in Fiumicino, the largest airport photovoltaic system in Europe, with an initial capacity of 22 MWP and an expected expansion of up to 60 MWP, which will reduce the CO₂ emissions of the airport of 11,000 tons per year. Even in Sweden, in.

How many communication base stations are there with wind and solar complementarity Overview The complementarity between wind and solar resources is. This large-capacity, modular outdoor base station seamlessly



integrates photovoltaic, wind power, and energy storage to provide a stable DC48V power. How many photovoltaic systems are there in Berlin?

Compared to solar thermal energy, there are far more photovoltaic systems registered in Berlin. As of July 7, 2023, 20,985 systems were in place, with a total installed capacity of around 230 MWp.

How much solar power does Berlin have?

According to the master plan study for the “Masterplan Solarcity Berlin”, the State of Berlin owns 5.4 % of Berlin’s buildings. Their roof surfaces account for 8.3 % of the solar potential (SenWEB 2019). On the public buildings in Berlin, there are 691 PV systems with a total installed capacity of 42.1 MWp (as of April 1, 2023).

Is solar energy a building block for Berlin's climate protection strategy?

The expansion of solar energy use is emphasised as a particularly important building block in Berlin’s climate protection strategy, since, with over 560,000 buildings in Berlin, there are rooftops and house façades aplenty, unlike suitable wind power sites.

How many solar thermal systems are there in Berlin?

As of March 29, 2023, there were about 8,250 solar thermal systems in the State of Berlin with an installed collector surface of more than 81,000 m² (last update as of December 31, 2015 for 7,733 systems, IP SYSCON 2016). Averaged over the years, the collector surface amounted to around 10 m² per system.



How much wind power does Berlin solar container communication sta

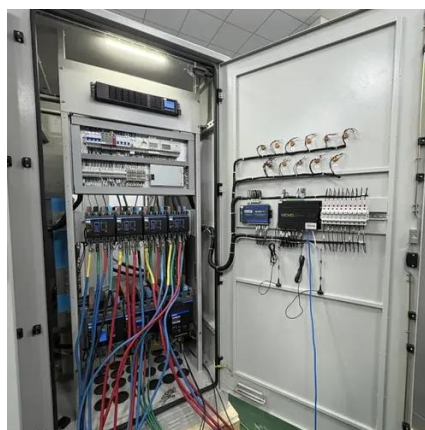


How many solar container communication stations are there in a ...

Integrated Solar-Wind Power Container for Communications This large-capacity, modular outdoor base station seamlessly integrates photovoltaic, wind power, and energy storage to provide a ...

German onshore wind power - output, business and perspectives

Wind power generation generally peaks during the winter months, partly balancing out lower power input by solar installations. Onshore turbines delivered nearly 21 billion kWh ...



First container wind turbine can create 45,000kWh of power yearly

Although the entire system is slightly bigger than a standard container, it is still powerful. "Container wind turbines are small plants with high yields," explained Troster in the ...



[Solar container communication wind power construction 2025](#)

How much wind power does China have in 2025? ty for the year, bringing the total to 570 GW of operating capacity. A notable project is the



Omattingga Wind Farm in Tibet,a 100 megawat ...



[Solar container communication station wind power node](#)

Integrated Solar-Wind Power Container for Communications This large-capacity, modular outdoor base station seamlessly integrates photovoltaic, wind power, and energy



Solar container communication station wind power construction case

Integrated Solar-Wind Power Container for Communications This large-capacity, modular outdoor base station seamlessly integrates photovoltaic, wind power, and energy storage to provide a ...



[Wind turbines and solar panels on the mobile ...](#)

In addition, the container is equipped with photovoltaic panels, storage batteries and an infrastructure for recharging electric ...





Solar Systems 2023

As of July 7, 2023, 20,985 systems were in place, with a total installed capacity of around 230 MWp.



First container wind turbine can create 45,000kWh ...

Although the entire system is slightly bigger than a standard container, it is still powerful. "Container wind turbines are small plants with ...



Wind turbines and solar panels on the mobile containers of the ...

In addition, the container is equipped with photovoltaic panels, storage batteries and an infrastructure for recharging electric vehicles. The turbines and poles of the turbines ...



Digital array solar container communication station wind power

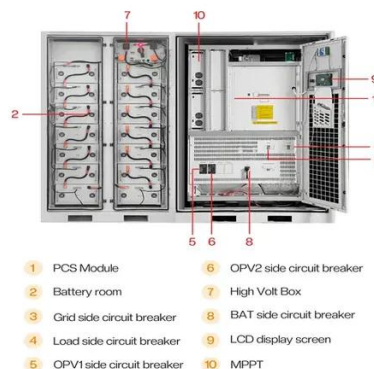
This large-capacity, modular outdoor base station seamlessly integrates photovoltaic, wind power, and energy storage to provide a stable DC48V power supply and optical distribution.





German onshore wind power - output, business ...

Wind power generation generally peaks during the winter months, partly balancing out lower power input by solar installations. ...



About wind power construction of solar container ...

This large-capacity, modular outdoor base station seamlessly integrates photovoltaic, wind power, and energy storage to provide a stable DC48V power supply and optical distribution.

How many solar container communication stations are there in a solar

Integrated Solar-Wind Power Container for Communications This large-capacity, modular outdoor base station seamlessly integrates photovoltaic, wind power, and energy storage to provide a ...





Contact Us

For inquiries, pricing, or partnerships:

<https://sccd-sk.eu>

Phone: +32 2 808 71 94

Email: info@sccd-sk.eu

Scan QR code for WhatsApp.

