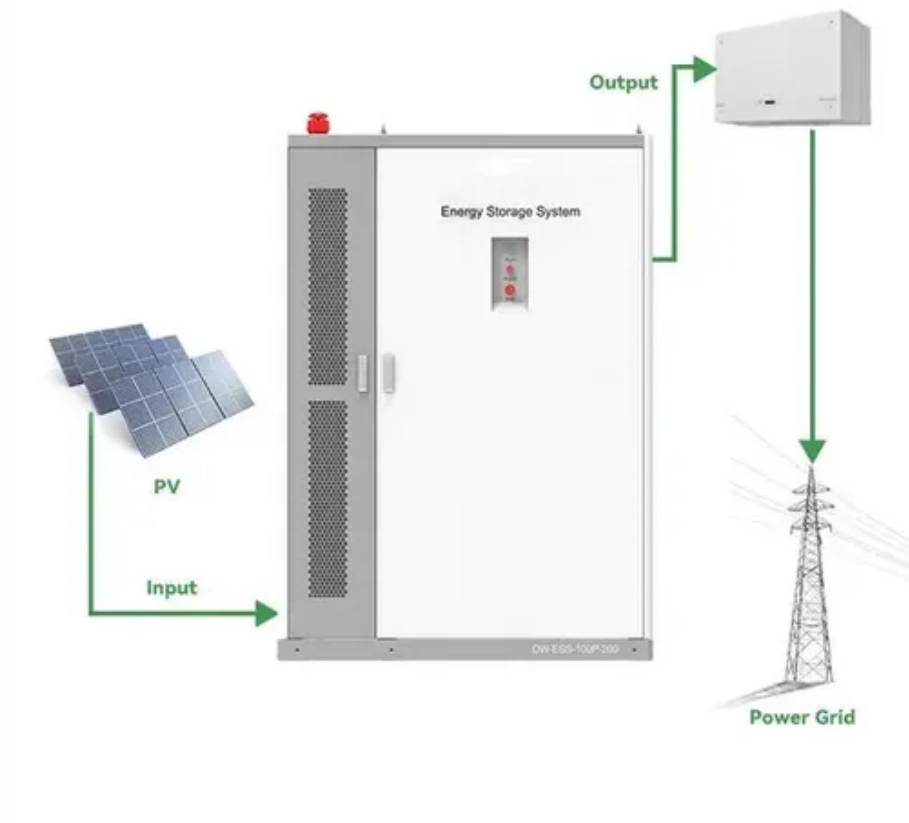




How thick is the surface glass of solar panels





How thick is the surface glass of solar panels

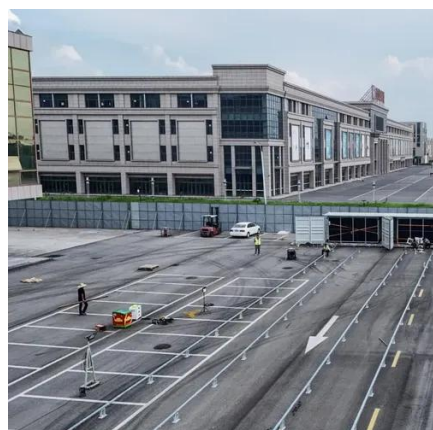
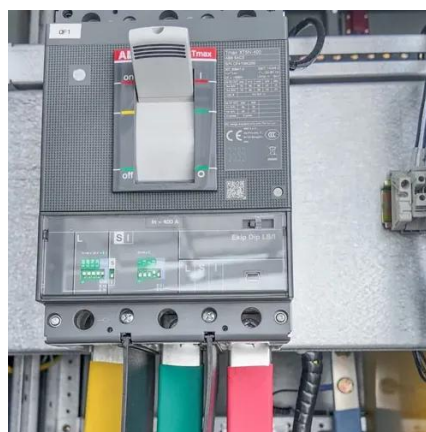


How Thick Are Solar Panels? Standard & Thin-Film

Standard residential and commercial solar modules, which use framed monocrystalline or polycrystalline silicon cells, maintain a consistent depth determined by ...

How Thick Are Solar Panels? [Updated: January 2026]

The thickness of solar panels varies depending on the type of panel and the manufacturer, but the most common thicknesses are 3.2 mm and 5-10 mm. The thickness of ...



How Much Glass Does a Photovoltaic Panel Have? Let's Crack ...

The average photovoltaic panel contains 3-4 millimeters of tempered glass - about the thickness of two stacked credit cards. But why does this matter? Let's break this down like a sunlight ...

What kind of glass is used in solar panels?

Glass used in solar panels is primarily low-iron tempered glass, with a thickness typically between 3 to 6 millimeters, ensuring ...



Solar Panel Glass Specifications Explained

Single laminated PV glass is the simplest configuration: Structure: Typically consists of two glass panes with a PV layer sandwiched between them. Example: A common ...

Solar Panel Glass Specifications Explained

Single laminated PV glass is the simplest configuration: Structure: Typically consists of two glass panes with a PV layer ...



How thick is the glass used in photovoltaic brackets

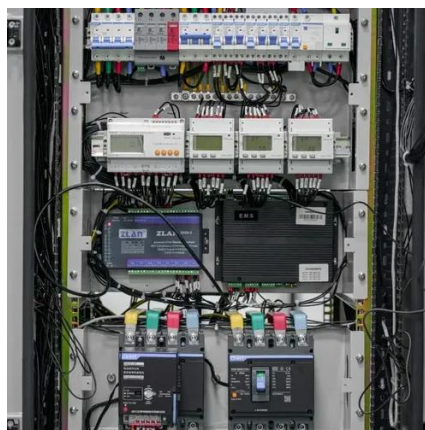
Glass thickness may be chosen in the range of 2.5 to 10 mm. Float tempered glass Float glass is a glass plate manufactured by floating the molten layer on a glass molten





Double Glass Solar Panel Thickness Guide: Find Your Perfect ...

Compare double glass solar panel thickness configurations for international projects. Includes custom small-format options under 200W for specialized global applications.



How Glass Thickness And Composition Affect ...

Most solar panels use tempered glass, which is heat-treated to enhance its strength and durability. The composition of this glass typically ...

Double Glass Solar Panel Thickness Guide: Find ...

Compare double glass solar panel thickness configurations for international projects. Includes custom small-format options under 200W ...



How Glass Thickness And Composition Affect Solar Panel

Most solar panels use tempered glass, which is heat-treated to enhance its strength and durability. The composition of this glass typically includes silica, soda ash, and limestone. ...





Solar Glass - Sants Group

For standard solar glass, it's often around 91% for a 3.2mm thickness. Anti-reflective coatings can increase this value, sometimes exceeding 93.6% for 3.2mm glass. Standard solar glass is ...



Solar Photovoltaic Glass Panel Specifications

Builders that intend to meet both the solar PV and solar water heating RERH specifications should detail the location and the square footage of the roof area to accommodate both technologies.

What kind of glass is used in solar panels? . NenPower

Glass used in solar panels is primarily low-iron tempered glass, with a thickness typically between 3 to 6 millimeters, ensuring optimal light transmittance and durability. This ...





Contact Us

For inquiries, pricing, or partnerships:

<https://sccd-sk.eu>

Phone: +32 2 808 71 94

Email: info@sccd-sk.eu

Scan QR code for WhatsApp.

