



How to check the base station battery





Overview

Open the battery compartment on the bottom of the Base Station using a Phillips head screwdriver. Confirm that your Base Station is using four (4) NiMH rechargeable batteries. Check the batteries and compartment for any signs of corrosion.

Open the battery compartment on the bottom of the Base Station using a Phillips head screwdriver. Confirm that your Base Station is using four (4) NiMH rechargeable batteries. Check the batteries and compartment for any signs of corrosion.

Your Base Station comes pre-installed with four (4) NiMH (nickel-metal hydride) rechargeable batteries, which are kept charged by your Base Stations. These batteries should never be replaced with alkaline type batteries over the lifetime of your Base Station. If there is a technical issue with the.

How does the Base system interact with the generator interlock on the main panel?

How do I connect my battery to my home WiFi network?

This article will help you connect your battery to your WiFi. It will also help you troubleshoot internet connectivity issues. How do I test my Base battery?

This.

First, let's take a look at what you'll need to check your SimpliSafe batteries. These are given below: Once you've got the above items, you're ready to move onto checking SimpliSafe batteries. The first step is to locate the sensors that require battery replacement. Depending on how many sensors.

Step 1: Check the Status Light. Open the electronics box & check to see if the status light (outlined in red below) is flashing green. If it is flashing green, your base station is working. Step 2: Check your Cheat Sheet (if you have one). If you purchased your base station in 2019 or later, your.

The following table describes the states of the charge status LED located on the front panel. No external power is connected and the unit is either switched off or



running off the internal battery. Unit is connected to a power supply and fast charging is complete or the battery does not need fast.

It's a good practice to check to see if the router has restricted or blocked the base unit from connecting to the Internet. A hardware issue with the Base Station could hinder its ability to connect to SimpliSafe. Performing a reset may help if the problem is related to temporary glitches in the.



How to check the base station battery



[SimpliSafe Battery Guide: Battery Life and ...](#)

Aside from the SimpliSafe base station and SimpliCam, SimpliSafe components require a periodic replacement of their batteries. ...

[SimpliSafe Battery Guide: Battery Life and Replacement Tips](#)

Aside from the SimpliSafe base station and SimpliCam, SimpliSafe components require a periodic replacement of their batteries. In this article, you will learn more about ...



[Wireless Weather Station Battery Replacement Instructions](#)

If you own a wireless weather station made by TFA, you may eventually need to replace the batteries. This guide will provide you with simple and clear instructions on how to do this ...

[Base Station Battery Failure , SimpliSafe Support Home](#)

Open the battery compartment on the bottom of the Base Station using a Phillips head screwdriver. Confirm that your Base Station is using four (4)



NiMH rechargeable batteries. ...



[Base Station Battery Failure , SimpliSafe Support Home](#)

If there is a technical issue with the batteries, or if the Base Station is having trouble keeping them charged, you may receive a Keypad warning or Base Station announcement to notify you of ...



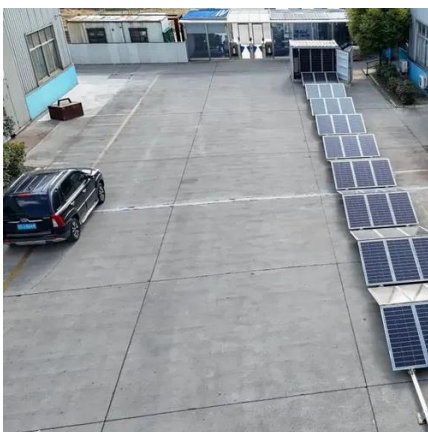
[How to Check Simplisafe Batteries , Explained in 10 Steps](#)

To do this, simply press the test button located on each alarm sensor or other device and wait for an audible sound from the base station to see if everything is working ...



[SimpliSafe Base Station Not Working? 8 Solutions \(Solved\)](#)

The SimpliSafe Base Station is typically dependable, but issues may arise due to hardware, software, or connection problems. Use the provided guide to troubleshoot and ...





[How to Check Simplisafe Batteries . Explained in 10 Steps](#)

What Will You Need? 10 Easy Steps on How to Check Simplisafe Batteries 5 Additional Tips and Tricks 5 Things You Should Avoid Conclusion First, let's take a look at what you'll need to check your SimpliSafe batteries. These are given below: 1. A voltmeter 2. Replacement batteries 3. An understanding of how to use a voltmeter 4. A Phillips screwdriver Once you've got the above items, you're ready to move onto checking SimpliSafe batteries. See more on safetywish mytrellis



How do I know if the base station is working? - Trellis

Both the green light & red light will turn off once the base station connects to the network. Then, if the status light (shown in red above) starts flashing ...



[Base Station \(Gen 3\) Overview and Installation Guide](#)

When a sensor on your system is triggered, it sends a signal to the Base Station, which sounds the loud, 100 dB siren and notifies you immediately. If the Base Station is unplugged or the ...

[SimpliSafe Base Station Not Working? 8 Solutions ...](#)

The SimpliSafe Base Station is typically dependable, but issues may arise due to hardware, software, or connection problems. Use ...





[How do I know if the base station is working?](#)

Both the green light & red light will turn off once the base station connects to the network. Then, if the status light (shown in red above) starts flashing green, your base station is working.

13

The following table describes the symbols showing battery and charging status in the top right corner of the display when the Base Station is switched on. Unit is connected to a ...



[Base Station Battery Failure , SimpliSafe Support ...](#)

If there is a technical issue with the batteries, or if the Base Station is having trouble keeping them charged, you may receive a Keypad warning or ...

[Installation and hardware , Base Help Center](#)

How do I test my Base battery? This article explains how you can simulate a power outage and test your Base battery system once your battery is installed.





Contact Us

For inquiries, pricing, or partnerships:

<https://sccd-sk.eu>

Phone: +32 2 808 71 94

Email: info@sccd-sk.eu

Scan QR code for WhatsApp.

