



How to check the load current of base station power supply





Overview

Digital Multimeter (DMM): This is your primary tool for measuring voltage, current, and resistance. Power Supply Unit: The PSU you want to test. Load Module (optional): A resistor or a device that can draw power can be used to test the PSU under load .

Digital Multimeter (DMM): This is your primary tool for measuring voltage, current, and resistance. Power Supply Unit: The PSU you want to test. Load Module (optional): A resistor or a device that can draw power can be used to test the PSU under load .

Learn how to test your power supply's capabilities and stability under stress. This video tutorial covers essential load testing techniques, including using a load tester, measuring voltage and current, and identifying potential issues. Keywords: load testing power supply, power supply testing.

Fortunately, it's easy to check your computer's power supply using a power supply tester, which you can get from any store that sells computer parts. If you can't find a PSU tester, you can check to see if the power supply is completely dead by doing a quick paperclip test or by measuring the power.

Knowing how to measure output current is essential when designing, testing, or troubleshooting a power supply. Whether you're confirming performance, checking compliance, or ensuring reliability, accurate current readings are critical. This guide explains the key methods used to measure output.

The full load of a power supply refers to the maximum operation ratings of the power supply. If it is supplying the rated current (same as maximum current) at the rated voltage, then the load that is connected is the full load. There is no set value for a full load because each power supply is.

Testing your PSU isn't something you'll need to do every day, but it's a good troubleshooting method if you think your power supply is failing. A faulty PSU can cause multiple issues including unexpected shutdowns, random freezing, excess temperatures, and boot instabilities. In the long-term, a.

The 8514 load has a capacity of 1200 watts, and can apply a DC load of up to 242



amperes. The WD-767 meter uses true-RMS circuitry to measure both AC line voltage and current, and it employs a four-quadrant multiplier to determine true (real) power consumption. The meter can measure up to 2000. How do you calculate the minimum load of a power supply?

Use the formula for power: Power = Voltage x Current, or $P = VI$. If for any reason you only have the current and power ratings of your power supply, you can use $P = I^2 R$, which can be changed to $R = P/I^2$. As you can see, calculating the minimum required load of your power supply is a very simple process.

How do you calculate wattage ratings of a power supply?

Once again, the wattage ratings of the loads should be at least 1.5 times the rated output of the supply. Use the formula for power: Power = Voltage x Current, or $P = VI$. If for any reason you only have the current and power ratings of your power supply, you can use $P = I^2 R$, which can be changed to $R = P/I^2$.

How do you test a power supply?

Connect the power supply to a wall outlet and turn on the switch. It's best to plug directly into the wall rather than a power strip or surge protector. Turn on the PSU tester. Once the tester is on, you should hear the internal power supply fan start to run. Some PSU testers require you to hold down a button to check the power supply.

How do I test a PSU under load?

If you want to ensure that the PSU operates correctly under load, you may perform load testing using a load module: Connect a Load: Connect a resistor or a device that draws power from the PSU. Repeat Voltage Tests: With the load applied, measure the output voltages again as previously described.



How to check the load current of base station power supply



[How to Test the Power Supply Unit \(PSU\) in Your PC](#)

Here are some signs your PC's PSU hardware is the problem---and three ways to test the PSU to see if it's still working properly. Before we talk about testing your computer's ...

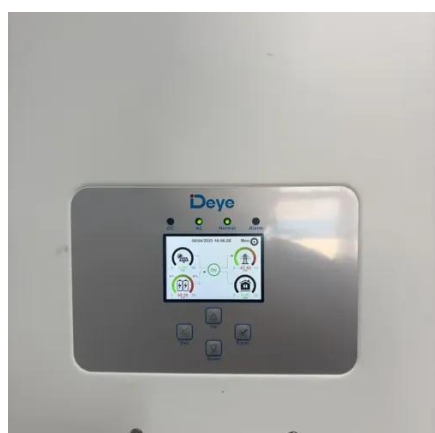
How to Measure Output Current in a Power Supply , Ideal Power

Knowing how to measure output current is essential when designing, testing, or troubleshooting a power supply. Whether you're confirming performance, checking compliance, or ensuring ...



[How to Manually Test a Power Supply With a Multimeter](#)

Testing a power supply manually using a multimeter is an essential skill for anyone involved in electronics, whether as a hobbyist, a technician, or an engineer.

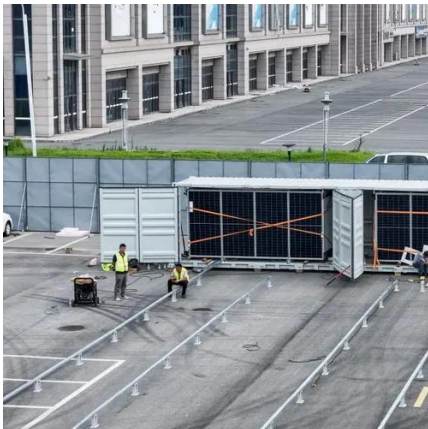


[Finding The Full/Minimum Load of a Power Supply](#)

1) Find the voltage and minimum current ratings of each output. 2) Use Ohm's Law: $R = V/I$ to calculate each output load. Notice that Channel 3



is rated at -12V, but it is not included as a ...

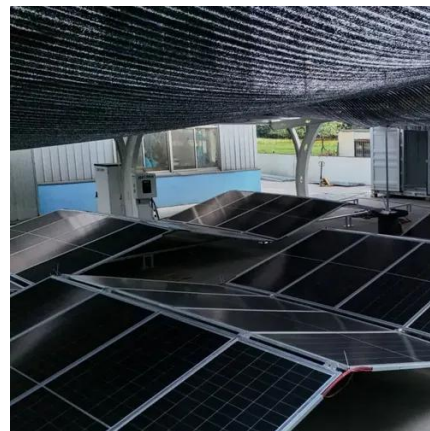


[Load Testing a Power Supply: A Step-by-Step Guide](#)

This video tutorial covers essential load testing techniques, including using a load tester, measuring voltage and current, and identifying potential issues.

How to Test Your PSU

Don't know how to test your PSU? Our step-by-step guide will detail everything you need to know about testing your power supply.



[How to Check a Power Supply: PSU Tester, Paperclip, & More](#)

All you'll need to do is disconnect the power supply from your computer, connect the PSU tester to the power supply and CPU, and power on your PC to check the power supply.





PSU: How to test a PSU (Power Supply Unit)

If your system is having issues turning on, you can check if your power supply unit (PSU) is functioning properly by performing a test. You will need a paper clip or a PSU jumper to ...

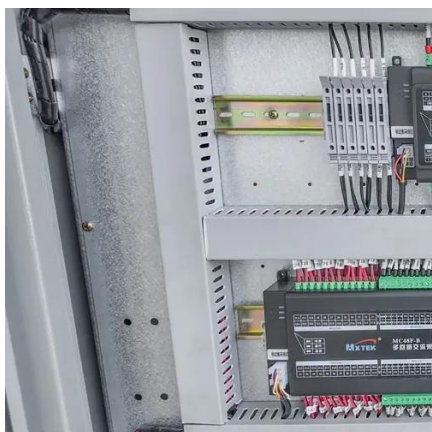


How To Measure Output Current Of Power Supply? Step-by-Step

How to Measure Output Current of Power Supply? Learn the tools, safety precautions, step-by-step guide, common errors, and result interpretation.

Microsoft Word

The two pieces of test equipment I used to perform the load tests are a BK Precision 8514 Electronic Load and a VIZ WD-767 AC Digital Wattmeter. The 8514 load has a capacity of ...



How to Check a Power Supply: PSU Tester, Paperclip, & More

Overview
Using a Paperclip
Using a Power Supply Tester
Using a Multimeter
If your desktop PC won't turn on, is stuck in a reboot loop, periodically powers down, or gives yo...
Using a PSU tester is the easiest way to check a power supply. Just disconnect all internal components from the PSU, attach the tester, and turn on your PC. You can use a bent paperclip to check if a power supply is completely dead. Once you figure out if the power



supply is giving you the right amount of power, make sure it gives you the same readings when components are connected. See more on [wikihow idealpower .uk](#)

How to Measure Output Current in a Power Supply ...

Knowing how to measure output current is essential when designing, testing, or troubleshooting a power supply. Whether you're confirming ...



Contact Us

For inquiries, pricing, or partnerships:

<https://sccd-sk.eu>

Phone: +32 2 808 71 94

Email: info@sccd-sk.eu

Scan QR code for WhatsApp.

