



How to check the power supply capacity of base station





Overview

Check your PC's power supply by doing a visual inspection, using software tools like HWMonitor, or testing with a PSU tester, multimeter, or the paperclip trick. These methods help you spot issues, confirm power levels, and make sure your system stays stable and safe.

Check your PC's power supply by doing a visual inspection, using software tools like HWMonitor, or testing with a PSU tester, multimeter, or the paperclip trick. These methods help you spot issues, confirm power levels, and make sure your system stays stable and safe.

Fortunately, it's easy to check your computer's power supply using a power supply tester, which you can get from any store that sells computer parts. If you can't find a PSU tester, you can check to see if the power supply is completely dead by doing a quick paperclip test or by measuring the power.

Knowing how to test the battery capacity of a power station is crucial for ensuring you have the reliable power you depend on. By learning these simple testing methods, you can take control and make informed decisions about your energy sources. Stick around as we reveal easy steps that will empower.

In this comprehensive guide, we will explore how to check your power supply wattage in Windows 10, covering multiple methods—from software solutions to hardware inspections—so you can determine your PSU's capacity confidently and efficiently. Before diving into the methods, it's important to.

The average battery capacity required by a base station ranges from 15 to 50 amp-hours (Ah), depending on the base station's operational demands and the technologies it employs. 1. The energy consumption of the equipment is not uniform; it varies significantly based on traffic load and service.

This guide will explain how you can check your PC's power supply and provide some useful methods to help you solve this issue. Why Is It Important to Know Your Power Supply?

The PSU is a crucial component of your computer, as it provides power to all other hardware. If you're planning to upgrade.



Check your PC's power supply by doing a visual inspection, using software tools like HWMonitor, or testing with a PSU tester, multimeter, or the paperclip trick. These methods help you spot issues, confirm power levels, and make sure your system stays stable and safe. The PSU is the backbone of.



How to check the power supply capacity of base station



[How to Check Power Supply on PC: Step by Step Method](#)

Learn how to check your PC power supply with easy step-by-step methods using software, multimeters, PSU testers, and quick visual inspections. Visit now!

[How to Check Power Supply Wattage Windows 10: A Step-by ...](#)

In this comprehensive guide, we will explore how to check your power supply wattage in Windows 10, covering multiple methods--from software solutions to hardware ...



[How to Check Power Supply Wattage in Windows 11: A Step-by ...](#)

Learn how to easily check your power supply wattage in Windows 11 with our step-by-step guide and ensure your PC runs smoothly.



[How to Check the Power Supply on a PC](#)

Having PC instability issues? You might need to check the power supply in your PC. This guide explains how.



[How to Check Power Supply on PC: Step by Step ...](#)

Learn how to check your PC power supply with easy step-by-step methods using software, multimeters, PSU testers, and quick visual inspections. ...

[How to Check the Power Supply on a PC](#)

Thus, understanding how to check the power supply on a PC is critical for maintaining the overall health of your computer. This comprehensive guide will explore various ...



[How to Check Your Power Supply on a Windows PC](#)

Whether you physically check the PSU label, use software to estimate power usage, or review your PC specifications, you'll be able to ...





How to Test Battery Capacity of a Power Station: Expert Guide

Knowing how to test the battery capacity of a power station is crucial for ensuring you have the reliable power you depend on. By learning these simple testing methods, you can take control ...



[How to Check a Power Supply: PSU Tester, Paperclip, & More](#)

All you'll need to do is disconnect the power supply from your computer, connect the PSU tester to the power supply and CPU, and power on your PC to check the power supply.

[How much battery capacity does the base station use?](#)

In evaluating how much battery capacity is required for base stations, it is essential to delve into their energy demands. Base stations serve as crucial links in wireless ...

50KW modular power converter



[How to Check the Power Supply on a PC](#)

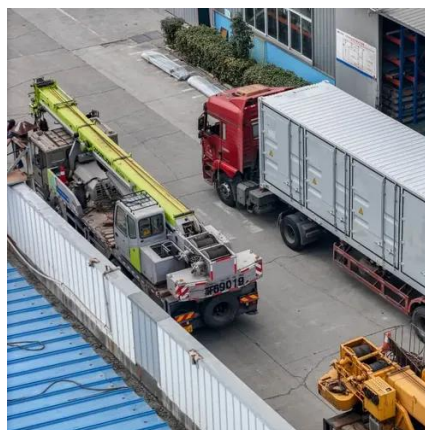
Having PC instability issues? You might need to check the power supply in your PC. This guide explains how.





[How to Check Your Power Supply on a Windows PC](#)

Whether you physically check the PSU label, use software to estimate power usage, or review your PC specifications, you'll be able to determine if your power supply is ...



[How much battery capacity does the base station ...](#)

In evaluating how much battery capacity is required for base stations, it is essential to delve into their energy demands. Base stations ...

[How to check power supply wattage Windows 11](#)

However, there are several methods to find out how to check power supply wattage in Windows 11, some of which may require third-party applications or a bit of hands-on ...





Contact Us

For inquiries, pricing, or partnerships:

<https://sccd-sk.eu>

Phone: +32 2 808 71 94

Email: info@sccd-sk.eu

Scan QR code for WhatsApp.

