



# How to configure the base station battery pack





## Overview

---

This article explains how you can simulate a power outage and test your Base battery system once your battery is installed.

This article explains how you can simulate a power outage and test your Base battery system once your battery is installed.

This manual will provide detailed product information and installation instructions for users of the wall-mounted series products of SHENZHEN BASENGREEN TECHNOLOGY CO.LTD (hereinafter referred to as BASENGREEN). Please read this manual carefully, and put this manual in a place where you can.

This guide outlines the design considerations for a 48V 100Ah LiFePO4 battery pack, highlighting its technical advantages, key design elements, and applications in telecom base stations. Why Choose LiFePO4 Batteries?

Lithium Iron Phosphate (LiFePO4) batteries are a type of lithium-ion battery with.

What makes a telecom battery pack compatible with a base station?

Compatibility and Installation Voltage Compatibility: 48V is the standard voltage for telecom base stations, so the battery pack's output voltage must align with base station equipment requirements. Modular Design: A modular structure.

How do I connect my battery to my home WiFi network?

This article will help you connect your battery to your WiFi. It will also help you troubleshoot internet connectivity issues. How do I test my Base battery?

This article explains how you can simulate a power outage and test your Base battery.

The Base Station is the brains of your system. It sends alarm signals to the monitoring center\* with built-in cellular and Wi-Fi connections, a battery backup that lasts up to 24 hours, and a 100 dB siren. When a sensor on your system is triggered, it sends a signal to the Base Station, which.



The Base Station is designed to operate outdoors and is housed in a rugged splash proof case. It is important to note however that the front panel is not waterproof so the lid must be shut if it is raining. Power can be obtained either from the internal battery supply or from an external source via.



## How to configure the base station battery pack

---

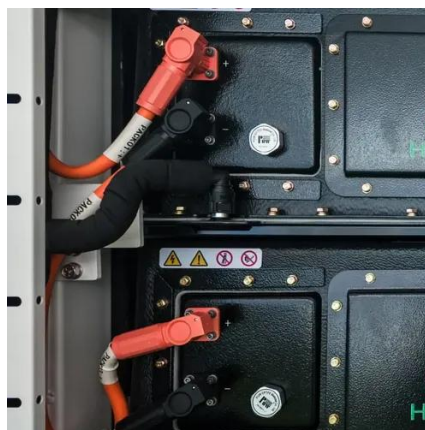


### [Installation and hardware , Base Help Center](#)

This article explains how you can simulate a power outage and test your Base battery system once your battery is installed.

### [BR-BOX-Stackable Battery Pack Installation & Operation ...](#)

Please read this manual carefully, and put this manual in a place where you can install, operate, and obtain it conveniently. The safety precautions mentioned in the manual do not represent ...

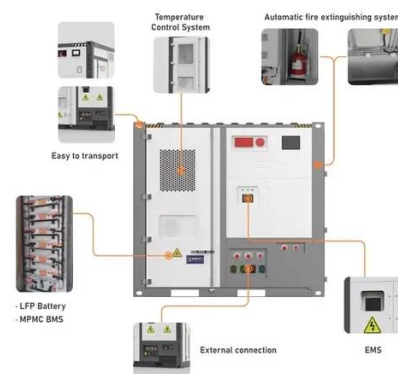


### **User Guide: RTK Base Station**

Follow this installation manual to properly configure your RTK Base Station. This section also serves as an integration guide for connecting the receiver with other hardware ...

### [Telecom Base Station Backup Power Solution: ...](#)

This guide outlines the design considerations for a 48V 100Ah LiFePO4 battery pack, highlighting its technical advantages, key design ...



## [Base Station \(Gen 3\) Overview and Installation Guide](#)

Only use NiMH Rechargeable Batteries - never insert regular, alkaline batteries into your Base Station! Watch this video from our team of experts for a hands-on installation experience. Use ...

## [Clear-Com CellCom Battery Pack Charger](#)

Installing a system, Placing the basestation, Placing the antennas and splitters - Clear-Com CellCom Battery Pack Charger User Manual



## **Telecom Base Station Backup Power Solution: Design Guide for ...**

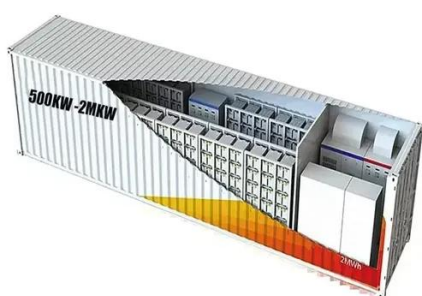
This guide outlines the design considerations for a 48V 100Ah LiFePO4 battery pack, highlighting its technical advantages, key design elements, and applications in telecom ...





## How to configure the base station battery pack

The Base battery system is built for performance and reliability. It combines a high-capacity lithium iron battery with intelligent software to optimize energy use.



## **BR-AIO-LV Stackable Battery Pack Installation & Operation ...**

Please read this manual carefully, and put this manual in a place where you can install, operate, and obtain it conveniently. The safety precautions mentioned in the manual do not represent ...

## **02**

The Base Station will accept an input voltage range of 8 - 30 V for operation. 19 V is required to charge the internal battery cells. Charging is achieved ...



## **02**

The Base Station will accept an input voltage range of 8 - 30 V for operation. 19 V is required to charge the internal battery cells. Charging is achieved by using the supplied mains power ...



## Setting up a base unit

Get a LiFePO<sub>4</sub> battery for the base station to keep that up and running for a while. Or put solar on it and let it self charge to keep it up and running longer.





## Contact Us

---

For inquiries, pricing, or partnerships:

<https://sccd-sk.eu>

Phone: +32 2 808 71 94

Email: [info@sccd-sk.eu](mailto:info@sccd-sk.eu)

Scan QR code for WhatsApp.

