



How to connect the base station battery





Overview

When putting the battery in the charging slot, the top side (Upper) should be facing up and visible, with the "+", "T", and "-" symbols going into the slot first. Gently push the battery fully into the slot. Once the battery is entirely in the base station, push down slightly to.

When putting the battery in the charging slot, the top side (Upper) should be facing up and visible, with the "+", "T", and "-" symbols going into the slot first. Gently push the battery fully into the slot. Once the battery is entirely in the base station, push down slightly to.

How do I connect my battery to my home WiFi network?

This article will help you connect your battery to your WiFi. It will also help you troubleshoot internet connectivity issues. How do I test my Base battery?

This article explains how you can simulate a power outage and test your Base battery.

The battery for the Arctis Nova Pro Wireless is marked on which side is the top and which is the bottom. Top Bottom When putting the battery in the charging slot, the top side (Upper) should be facing up and visible, with the "+", "T", and "-" symbols going into the slot first. Gently push the.

The Base Station is the brains of your system. It sends alarm signals to the monitoring center* with built-in cellular and Wi-Fi connections, a battery backup that lasts up to 24 hours, and a 100 dB siren. When a sensor on your system is triggered, it sends a signal to the Base Station, which.

Connect the power adapter and the Ethernet cable to your base station. Download the free Arlo app to install your base station and camera. This app provides step-by-step instructions. The base station is powered on. A firmware update is in progress. DO NOT TURN OFF THE BASE STATION OR CAMERAS. The.

In this guide, we'll delve into the step-by-step process of setting up an Arlo base station, covering everything from initial setup and connection to configuring settings and optimizing performance. With these instructions, users can confidently



embark on the journey of enhancing their home.

Base Station & Wireless Controller Installation Guide Parts supplied Base Station S100 Remote No. 6 size No. 8 size Self-tapping screws Cradles x2 AAA batteries x2 Belt clip assembly Lanyard Locating Base Station Min 3ft 3in (1m) Base Station & Wireless Controller Installation Guide. Page 2.



How to connect the base station battery



[How the Base battery works: A complete guide to grid ...](#)

How does your Base battery work? How does it connect to the grid? What happens during an outage? This guide covers everything you need to know about how your Base battery ...

Base Station Quick Start Guide

Get the Arlo app Download the free Arlo app to install your base station and camera. This app provides step-by-step instructions.



[Base station Installation Instructions](#)

Installation Instructions To ensure optimal performance and connectivity of your base station, follow these setup instructions.

[How the Base battery works: A complete guide to ...](#)

How does your Base battery work? How does it connect to the grid? What happens during an outage? This guide covers everything you need to



...



How to insert battery into Base Station?

When putting the battery in the charging slot, the top side (Upper) should be facing up and visible, with the "+", "T", and "-" symbols going into the slot ...



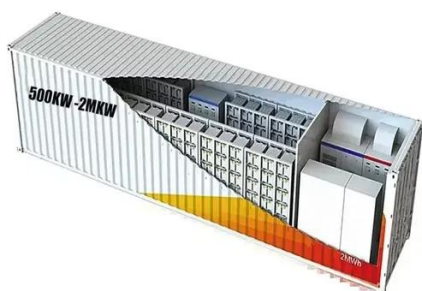
How to Set Up a Replacement Base Station , SimpliSafe Support ...

To do this, remove the power cable from the bottom of the Base Station, then use your own Phillips head screwdriver to remove the screw from the base. Twist the bottom of the Base ...



How to Set up Arlo Base Station , 10 Easy Methods (2025)

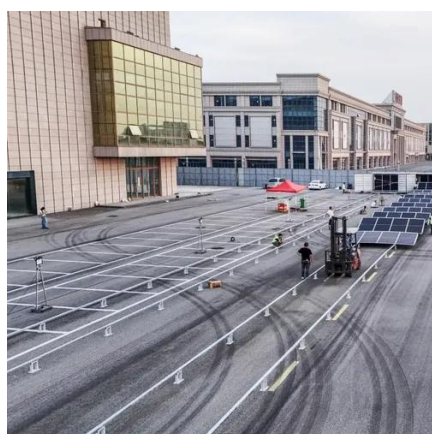
In this guide, we'll delve into the step-by-step process of setting up an Arlo base station, covering everything from initial setup and connection to configuring settings and ...





[RAYMARINE BASE STATION INSTALLATION MANUAL Pdf ...](#)

Before connecting the Base Station, ensure that the 12 V supply on the associated SeaTalk system is protected by a 5 A fuse. Countersink the pilot holes to prevent damage to the ...



[Installation and hardware , Base Help Center](#)

This article will help you connect your battery to your WiFi. It will also help you troubleshoot internet connectivity issues. How do I test my Base battery? This article explains how you can ...

[Base Station \(Gen 3\) Overview and Installation Guide](#)

Only use NiMH Rechargeable Batteries - never insert regular, alkaline batteries into your Base Station! Watch this video from our team of experts for a hands-on installation experience. Use ...



Pairing a Base Station: A Comprehensive Guide to Seamless ...

In this article, we'll delve into the world of base station pairing, exploring the different types of base stations, the pairing process, and troubleshooting tips to help you overcome ...



How to insert battery into Base Station?

When putting the battery in the charging slot, the top side (Upper) should be facing up and visible, with the "+", "T", and "-" symbols going into the slot first. Gently push the battery fully into the ...



RAYMARINE BASE STATION INSTALLATION

...

Before connecting the Base Station, ensure that the 12 V supply on the associated SeaTalk system is protected by a 5 A fuse. Countersink the ...



Contact Us

For inquiries, pricing, or partnerships:

<https://sccd-sk.eu>

Phone: +32 2 808 71 94

Email: info@sccd-sk.eu

Scan QR code for WhatsApp.

