



# How to connect the positive and negative poles of the battery in the energy storage cabinet





## Overview

---

Identify the positive and negative terminals on your battery. These are labeled and color coded. (Red for Positive, Black for Negative) Verify you have all hardware to attach the cable properly. Check to ensure the bolt insert for the terminal fully seats and can be.

Identify the positive and negative terminals on your battery. These are labeled and color coded. (Red for Positive, Black for Negative) Verify you have all hardware to attach the cable properly. Check to ensure the bolt insert for the terminal fully seats and can be.

It consists of two electrodes, a positive electrode (anode) and a negative electrode (cathode), which are immersed in an electrolyte solution. The positive and negative electrodes are connected by a conductive material called the electrolyte. The positive electrode is made of a material that can.

Identify the positive and negative terminals on your battery. These are labeled and color coded. (Red for Positive, Black for Negative) Verify you have all hardware to attach the cable properly. Check to ensure the bolt insert for the terminal fully seats and can be tightened to the proper torque.

A practical guide for technicians, installers, and end-users to ensure safe battery operations Knowing how to distinguish the positive and negative poles of energy storage batteries is critical for safety and performance. Incorrect connections can lead to: "Mismatched terminals caused 23% of.

Reliable and low-loss connections are required for the reliable distribution of power flows inside the battery module. Innovative connection technologies are used for the efficient connection of signal lines. Data connections in accordance with current product standards ensure high failsafe.

The positive and negative sides of a battery are also commonly referred to as the poles. The positive side is often marked with a plus (+) sign or a red color, while the negative side is marked with a minus (-) sign or a black color. These markings help users identify the respective terminals.

carefully before installing or using the battery. Failure to follow any of the



instructions or warnings in this document can result in electrical shock, serious injury, death, or may damage the battery and the whole system. □If the battery is stored for a prolonged time, it is requirement that they.



## How to connect the positive and negative poles of the battery in the c

---



### Battery Positive and Negative Side: Explained and How to Identify

Learn about the battery terminals, poles, and electrodes to understand the + and - sides of a battery.

### How to Identify Positive and Negative Terminals on Energy Storage

A practical guide for technicians, installers, and end-users to ensure safe battery operations



### How to Identify Positive and Negative Terminals on Energy ...

A practical guide for technicians, installers, and end-users to ensure safe battery operations



### [New York State Battery Energy Storage System Guidebook](#)

The Battery Energy Storage System Guidebook contains information, tools, and step-by-step instructions to support local governments



managing battery energy storage ...



### Connection technology for energy storage systems

Install your energy storage systems quickly, safely, and cost-effectively for applications up to 1,500 V - with pluggable battery connections via busbar connection or via battery-pole connector.

### Solar Lithium Battery Energy Storage System

Before connecting the power cables, using multi-meter to measure cable continuity, short circuit, confirm positive and negative, and accurately mark the cable labels.



### Connector for energy storage systems

Busbar connectors and battery pole connectors can be used quickly, safely, and economically in energy storage systems for applications up to 1,500 V. Benefit from the advantages of both ...

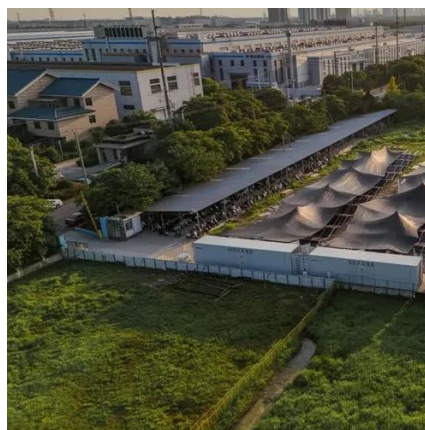






## Positive and Negative Battery - 5 Key Differences Explained Simply

In this article, we will discuss positive and negative battery terminals in a simple and comprehensive way, as well as explaining the five main differences between them.



### how to connect the positive and negative poles of energy storage ...

The good battery should have the positive jumper cable attached to the positive battery terminal and the negative jumper cable attached to the negative battery terminal.

### [Understanding Battery Polarities: A Diagram](#)

Learn about the positive and negative terminals on a battery with a diagram and explanation. Understand how to connect and disconnect a battery.



### EG4-LL Rack Mounted Battery Manual

In general, you will need the following items to install your battery into an EG4 racking solution. Identify the positive and negative terminals on your battery.



## Contact Us

---

For inquiries, pricing, or partnerships:

<https://sccd-sk.eu>

Phone: +32 2 808 71 94

Email: [info@sccd-sk.eu](mailto:info@sccd-sk.eu)

Scan QR code for WhatsApp.

